

418 6th STREET
BROOKINGS, SD 57006



DESIGNER:
LILY DESIGN, LLC
CONTACT: LYNDA PIERCE
PHONE: 605-651-3567
EMAIL: lynda@lilydesignbuild.com

SHEET INDEX:

T0.1	TITLE SHEET
A0.1	SITE PLAN
A1.0	FOUNDATION PLAN
A1.1	FLOOR PLAN
A1.2	ROOF PLAN
A1.3	REFLECTED CEILING PLAN
A2.0	BUILDING SECTIONS
A3.0	EXTERIOR ELEVATIONS
A3.1	EXTERIOR ELEVATIONS
A4.0	INTERIOR ELEVATIONS
A4.1	INTERIOR ELEVATIONS
	ROOM FINISH SCHEDULE
A4.2	DOOR & WINDOW ELEVATIONS
	DOOR SCHEDULE



605.651.3567
lynda@lilydesignbuild.com

[illegible]

TITLE SHEET

PROJECT NO.
C_LD20_023

BROOKINGS
COUNTY TITLE

6TH ST, BROOKINGS, SD

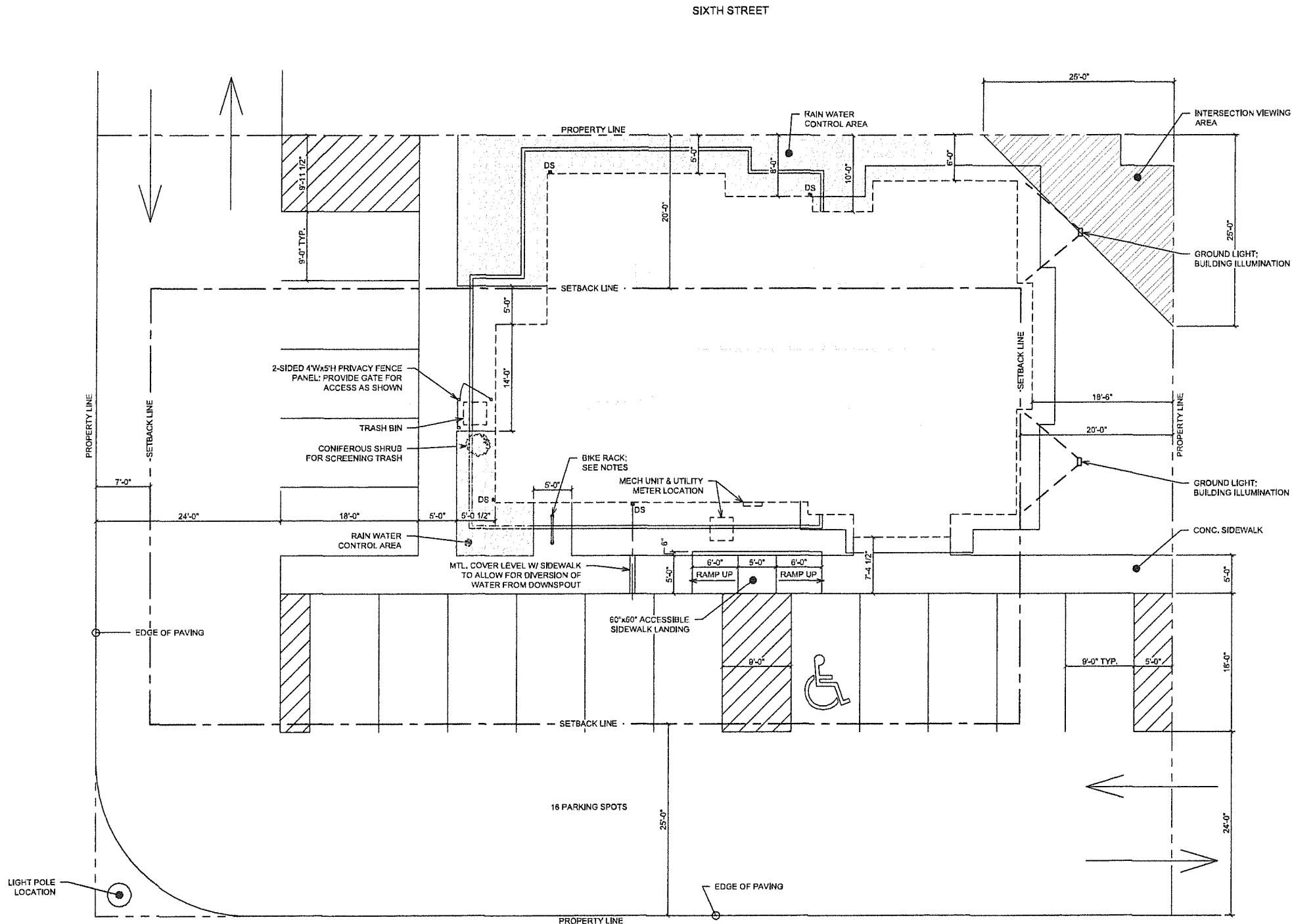
LYNDA PIERCE

DATE: 06.17.21

SHEET:

T0.1

DO NOT SCALE OFF DRAWINGS. THIS
DRAWING MAY NOT BE PRINTED TO
SCALE



- SITE NOTES:**
- PROJECT ADDRESS: 418 8TH STREET
 - LEGAL DESCRIPTION: CHEEVERS ADDN, LOT 1, EXC H-1
 - ZONE: B-1 CENTRAL BUSINESS DISTRICT WITH COMMERCIAL CORRIDOR OVERLAY DISTRICT
 - PERMITTED USE: OFFICE BUILDING
 - SETBACKS: IN CONFORMANCE WITH SEC. 94-127
 - MIN. FRONT YARD = 20 FT (0 FT REQ. WITHIN B-1)
 - MIN. SIDE YARD = 7 FT WHERE BUFFERYARD IS NOT REQ. (0 FT REQ. WITHIN B-1)
 - MIN. REAR YARD = 25 FT WHERE BUFFERYARD IS NOT REQ. (20 FT REQ. WITHIN B-1)
 - PARKING REQUIREMENTS: NA - PROPERTY IS LOCATED WITHIN THE B-1 CENTRAL BUSINESS DISTRICT AND DOES NOT REQUIRE OFF-STREET PARKING.
 - PARKING PROVIDED = 18
 - BUFFER YARD: NA - ABUTTING LAND IS ZONED B-1 AND B-2
 - PARKING AREA SURFACE = 8,259 SF
 - TOTAL SURFACED AREA (INCLUDING PARKING AND SIDEWALKS) = 8,321 SF
 - LANDSCAPE REQUIREMENTS - SEE LANDSCAPING PLAN.
 - SIGNAGE REQUIREMENTS: AREA ALLOWED FOR LOTS WITH 2 OR MORE FRONTAGES = 800 SF - OR - 3 SF PER LINEAR FOOT OF STREET FRONTAGE
 - LINEAR FOOT OF STREET FRONTAGE = 242' x 3 = 726 SF
 - USE LESSER OF TWO METHODS = 800 SF
 - PLANNED SIGNAGE SQUARE FOOTAGE = 85 SF
 - MAX. SF PER SIGN ALLOWED = 80 SF
 - MAX. SF OF PLANNED SIGNAGE = 50 SF
 - PLANNED SIGNAGE TO BE ILLUMINATED, NON-MOTION.
 - BIKE RACK DESIGN INTENT: ULINE, 3-LOOP WAVE STYLE BIKE RACK - 5 BIKE CAPACITY, BLACK, MODEL #H-2543BL
 - SITE LIGHTING - SEE REFLECTED CEILING PLAN FOR MORE INFORMATION REGARDING PEDESTRIAN AND BUILDING LIGHTING



605.651.3567
lynda@lilydesignbuild.com

DATE:	
REVISIONS:	
DESCRIPTION:	

SHEET NAME:
SITE PLAN

DO NOT SCALE OFF DRAWINGS. THIS DRAWING MAY NOT BE PRINTED TO SCALE

PROJECT NO.
C_LD20_023

BROOKINGS COUNTY TITLE

6TH ST, BROOKINGS, SD

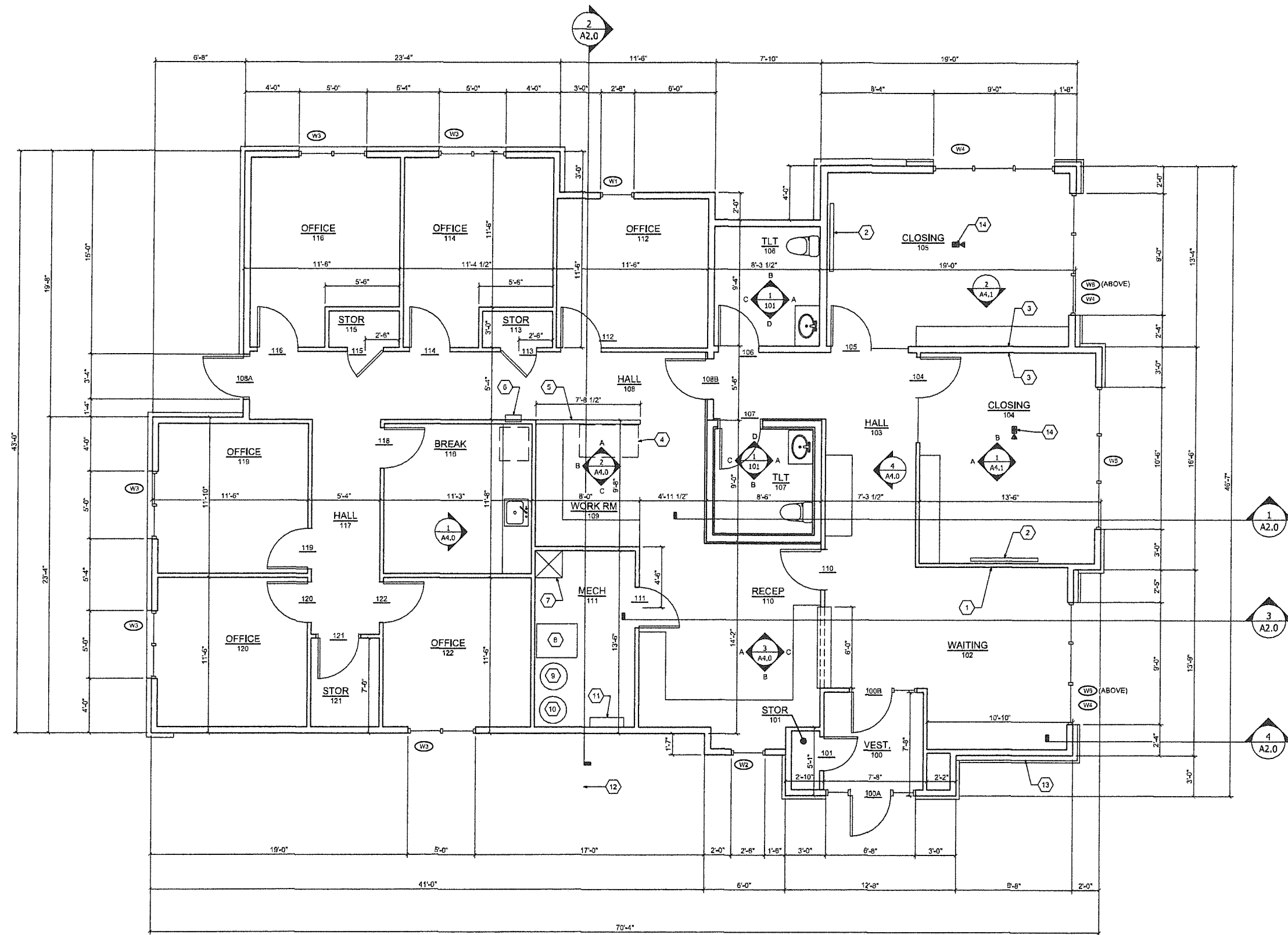
PROJECT MANAGER
LYNDA PIERCE

DATE:
06.17.21

SHEET:
A0.1



DO NOT SCALE OFF DRAWINGS. THIS
DRAWING MAY NOT BE PRINTED TO
SCALE.



GENERAL NOTES:

1. ABC
2. DEF
3. GH

KEY NOTES:

1. CUSTOM ARTWORK LOCATION
2. WALL-MOUNTED TELEVISION. MOUNT CENTER OF TV @ 72" AFF
3. ACOUSTIC WALL PANELS, SEE INTERIOR ELEVATION.
4. XEROX MACHINE LOCATION. PROVIDE ELEC. AND DATA AS REQ.
5. 42" H WALL. CAP W/ FLAM-?
6. SEMI-RECESSED FIRE EXTINGUISHER CABINET.
7. 24"x24" MOP SINK W/ FAUCET AND WALL-MOUNTED MOP HOLDER.
8. FURNACE LOCATION, VERIFY.
9. WATER HEATER LOCATION, VERIFY.
10. WATER SOFTENER LOCATION, VERIFY.
11. ELECTRICAL PANEL LOCATION, VERIFY.
12. OUTDOOR A/C CONDENSING UNIT LOCATION, VERIFY.
13. HATCHING INDICATES DOUBLE WALL LOCATION UP TO 2'-0" AFF. SEE DETAIL 4/A2.0.
14. IN-FLOOR ELEC. AND DATA LOCATION, DATA CONNECTED TO TELEVISION AND WITHIN ADJACENT CASEWORK. COORDINATE FINAL LOCATIONS W/ OWNER.
- 15.



605.651.3567
lynda@lilydesignbuild.com

DATE:

REVISIONS:
DESCRIPTION:

SHEET NAME:
FLOOR PLAN

PROJECT NO.
C_LD20_023

BROOKINGS
COUNTY TITLE

6TH ST. BROOKINGS, SD
PROJECT MANAGER

LYNDA PIERCE

DATE:
06.14.21

SHEET:

A1.1

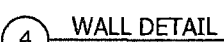
DO NOT SCALE OFF DRAWINGS. THIS
DRAWING MAY NOT BE PRINTED TO
SCALE

1 FLOOR PLAN

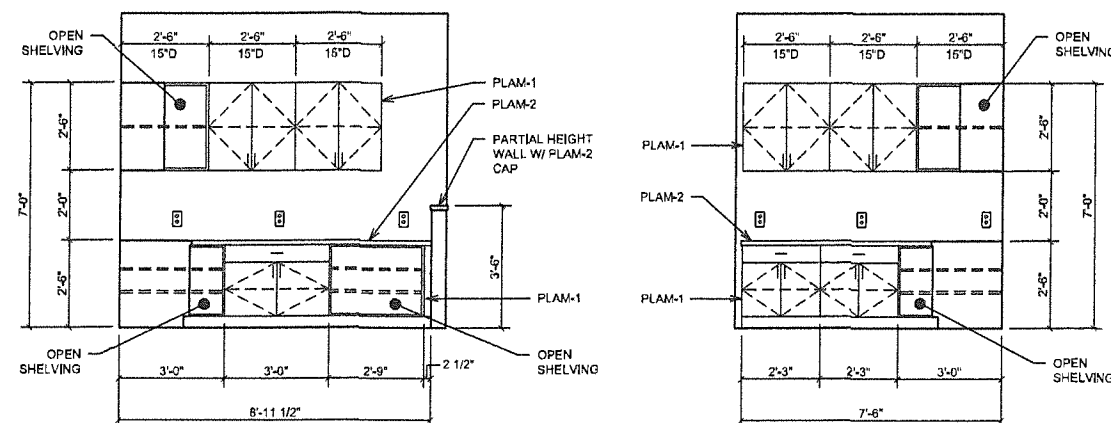
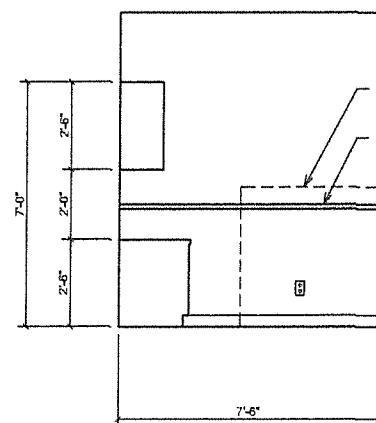
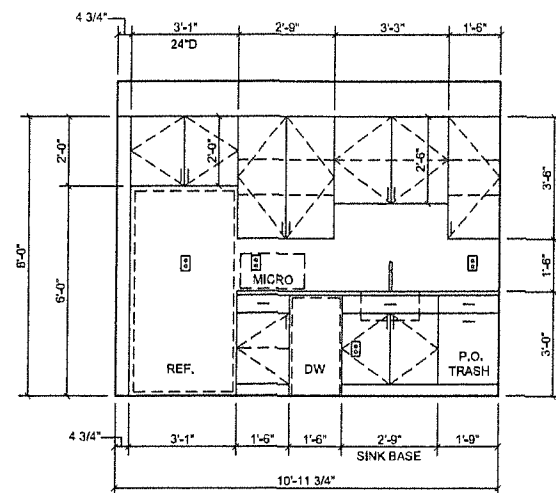
Scale: 1/4" = 1'-0"



DO NOT SCALE OFF DRAWINGS. THIS
DRAWING MAY NOT BE PRINTED TO
SCALE.



Scale: $1/4" = 1'-0"$



FINISH NOTES:

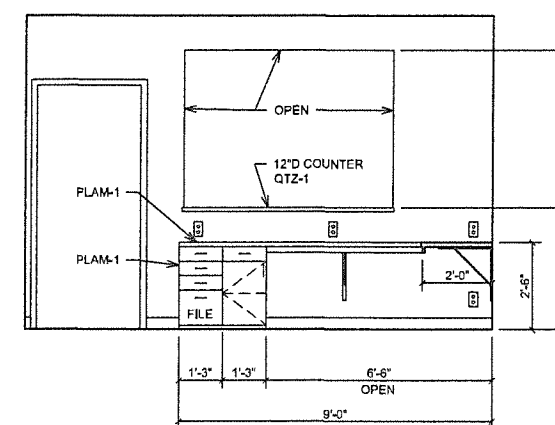
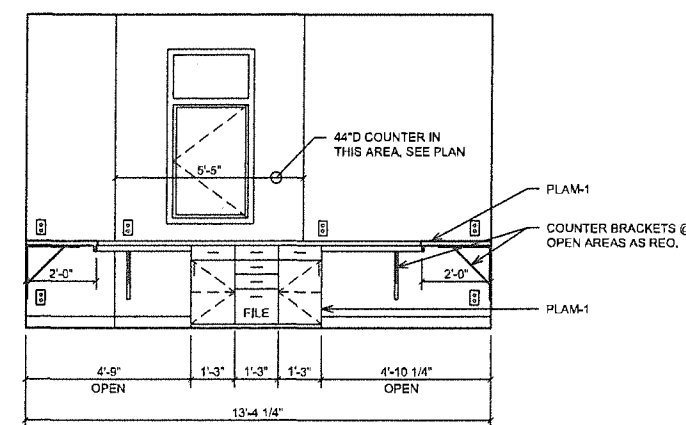
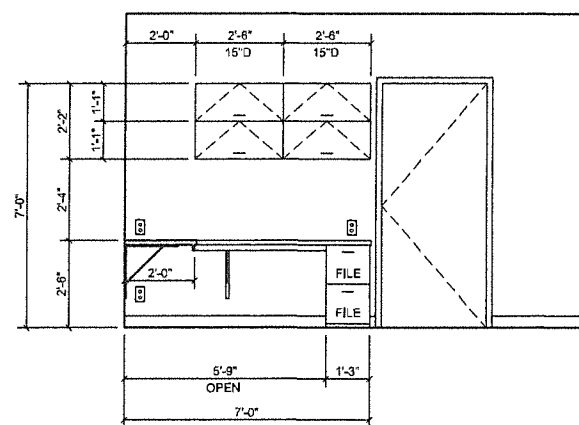
1. ABC
2. DEF
3. GHI

0. 011

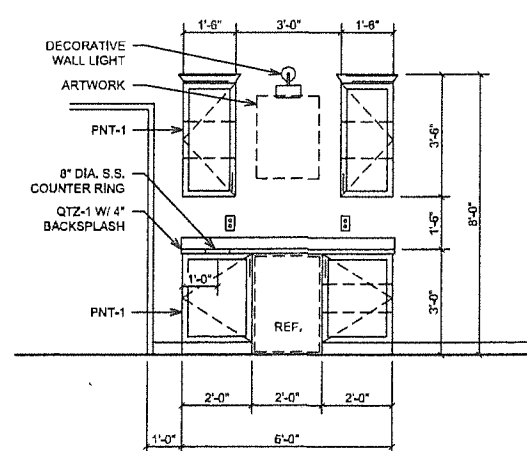


605.651.3567
lynda@lilydesignbuild.com

lynda@lilydesignbuild.com

[illegible]

Scale: 3/8" = 1'-0"



Scale: 3/8" = 1'-0"

SHEET NAME:
INTERIOR ELEVATIONS

DO NOT SCALE OFF DRAWINGS. THIS
DRAWING MAY NOT BE PRINTED TO
SCALE

PROJECT NO.
C LD20 023

BROOKINGS
COUNTY TITLE

6TH ST, BROOKINGS, SD

PROJECT MANAGER

LYNDA PIERCE

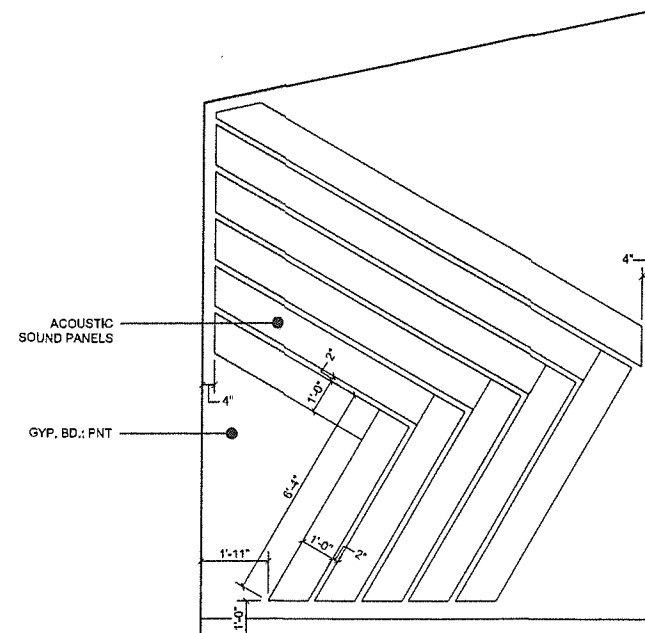
DATE:

06.14.21

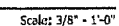
SHEET:

A4.0



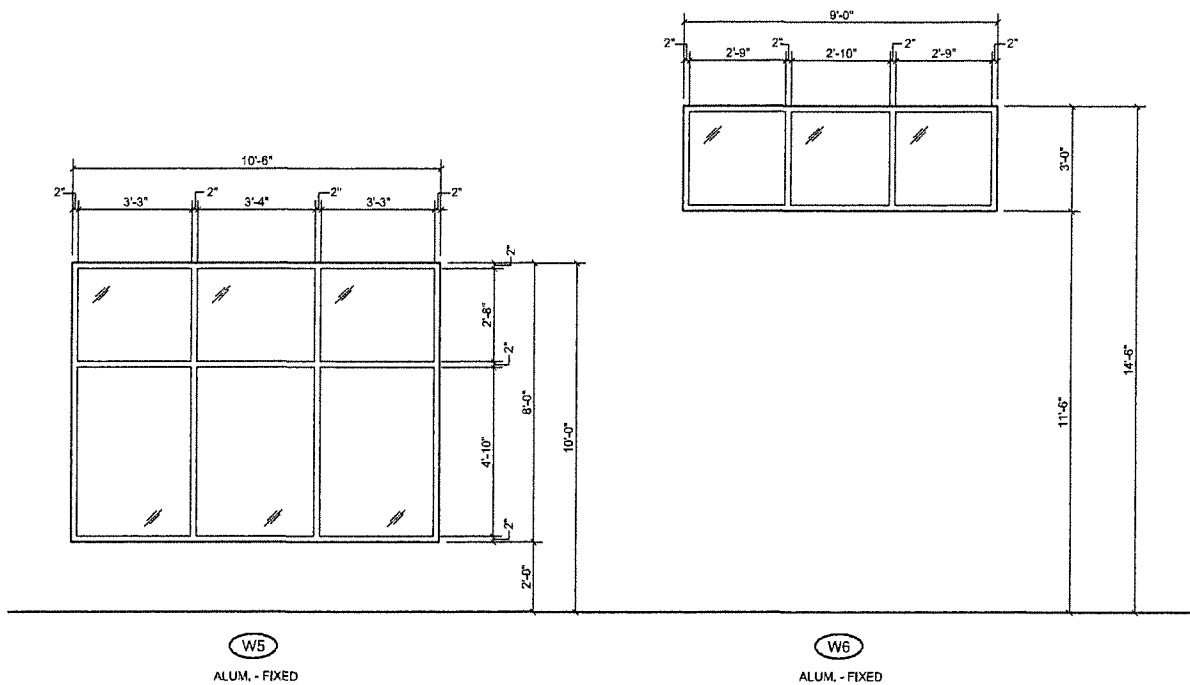
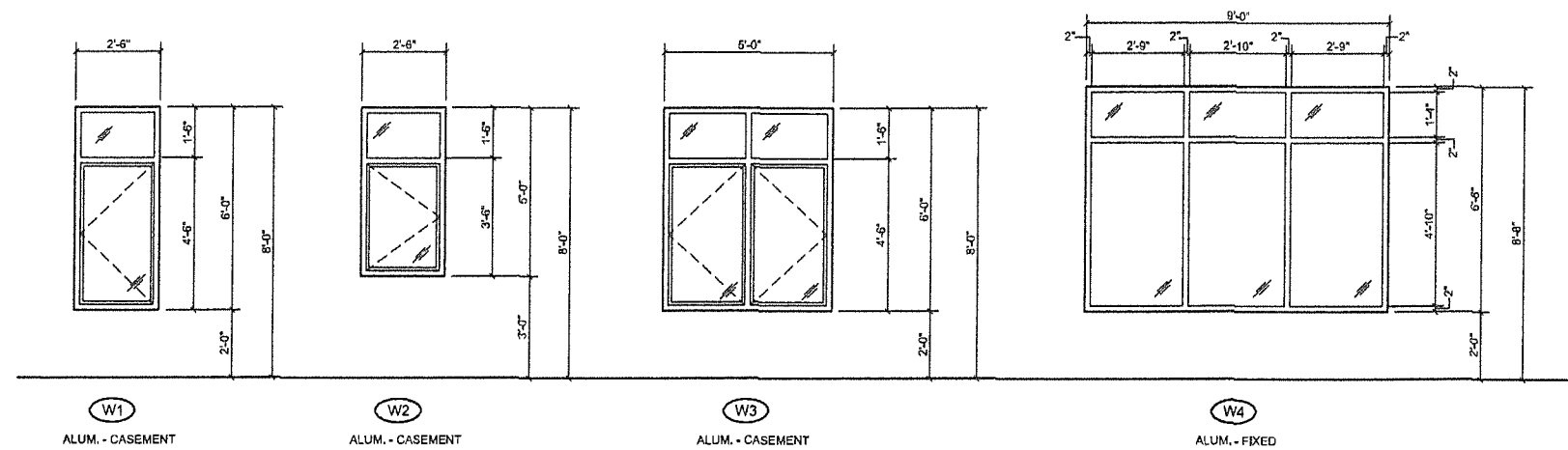


Scale: 3/8" = 1'-0"



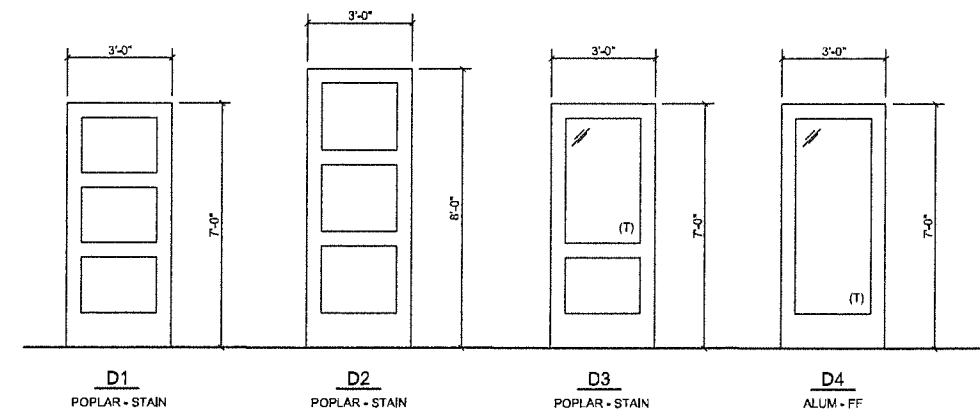
ROOM FINISH SCHEDULE									
ROOM #	ROOM NAME	BASE	FLOOR	WALLS				CEILING FINISH	CEILING HEIGHT
				NORTH	EAST	SOUTH	WEST		
100	VEST.	VB-2	CPT-1	PNT-1	PNT-1	PNT-1	PNT-1	GYP BD.	VAULT
101	STOR	VB-1	CPT-1	PNT-1	PNT-1	PNT-1	PNT-1	GYP BD.	9'-0"
102	WAITING	VB-2	CPT-2/TILE-2	PNT-1	PNT-1	PNT-1	PNT-1	GYP BD.	VAULT
103	HALL	VB-2	TILE-1&2	PNT-1	PNT-1	PNT-1	PNT-1	GYP BD.	VAULT/10'-0"
104	CLOSING	VB-2	CPT-2	PNT-1	PNT-1	PNT-1	PNT-1	GYP BD.	VAULT
105	CLOSING	VB-2	CPT-2	PNT-1	PNT-1	PNT-1	PNT-1	GYP BD.	VAULT
106	TLT	TILE-1	TILE-2	PNT-1	PNT-1	PNT-1	PNT-1	GYP BD.	9'-0"
107	TLT	TILE-1	TILE-2	PNT-1	PNT-1	PNT-1	PNT-1	GYP BD.	9'-0"
108	HALL	VB-2	CPT-3	PNT-1	PNT-1	PNT-1	PNT-1	GYP BD.	9'-0"
109	WORK RM	VB-2	CPT-3	PNT-1	PNT-1	PNT-1	PNT-1	GYP BD.	9'-0"
110	RECEP	VB-2	CPT-3	PNT-1	PNT-1	PNT-1	PNT-1	GYP BD.	9'-0"
111	MECH	VB-1	CONC	PNT-1	PNT-1	PNT-1	PNT-1	GYP BD.	9'-0"
112	OFFICE	VB-1	CPT-3	PNT-1	PNT-1	PNT-1	PNT-1	GYP BD.	9'-0"
113	STOR	VB-1	CPT-3	PNT-1	PNT-1	PNT-1	PNT-1	GYP BD.	9'-0"
114	OFFICE	VB-1	CPT-3	PNT-1	PNT-1	PNT-1	PNT-1	GYP BD.	9'-0"
115	STOR	VB-1	CPT-3	PNT-1	PNT-1	PNT-1	PNT-1	GYP BD.	9'-0"
116	OFFICE	VB-1	CPT-3	PNT-1	PNT-1	PNT-1	PNT-1	GYP BD.	9'-0"
117	HALL	VB-2	CPT-3	PNT-1	PNT-1	PNT-1	PNT-1	GYP BD.	9'-0"
118	BREAK	VB-1	LVT-1	PNT-1	PNT-1	PNT-1	PNT-1	GYP BD.	9'-0"
119	OFFICE	VB-1	CPT-3	PNT-1	PNT-1	PNT-1	PNT-1	GYP BD.	9'-0"
120	OFFICE	VB-1	CPT-3	PNT-1	PNT-1	PNT-1	PNT-1	GYP BD.	9'-0"
121	STOR	VB-1	CPT-3	PNT-1	PNT-1	PNT-1	PNT-1	GYP BD.	9'-0"
122	OFFICE	VB-1	CPT-3	PNT-1	PNT-1	PNT-1	PNT-1	GYP BD.	9'-0"





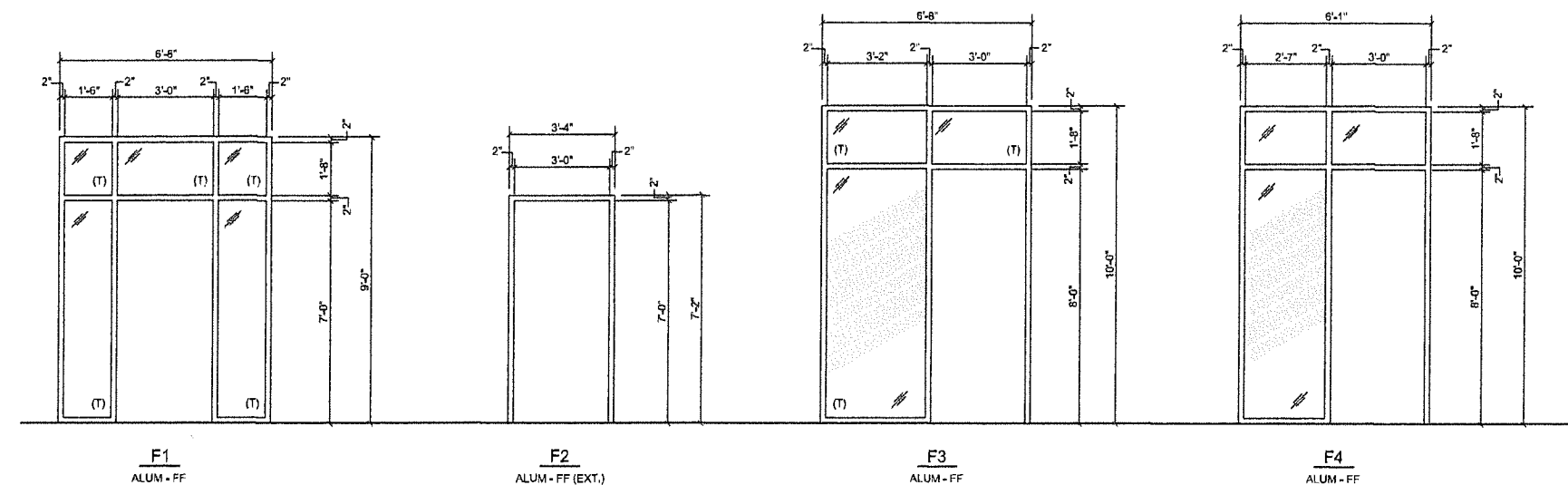
1 WINDOW ELEVATIONS

Scale: 3/8" = 1'-0"



2 DOOR ELEVATIONS

Scale: 3/8" = 1'-0"



3 FRAME ELEVATIONS

Scale: 3/8" = 1'-0"

DOOR SCHEDULE			
NUMBER	SIZE	DOOR TYPE	FRAME TYPE
100A	3'-0"x7'-0"	D4	F1
100B	3'-0"x7'-0"	D4	F1
101	2'-6"x7'-0"	D1	F2
104	3'-0"x7'-0"	D2	F3
105	3'-0"x7'-0"	D2	F4
106	3'-0"x7'-0"	D1	F2
107	3'-0"x7'-0"	D1	F2
108A	3'-0"x7'-0"	D4	F2
108B	3'-0"x7'-0"	D3	F2
110	3'-0"x7'-0"	D1	F2
111	3'-0"x7'-0"	D1	F2
112	3'-0"x7'-0"	D3	F2
113	2'-8"x7'-0"	D1	F2
114	3'-0"x7'-0"	D3	F2
115	2'-8"x7'-0"	D1	F2
116	3'-0"x7'-0"	D3	F2
118	3'-0"x7'-0"	D3	F2
119	3'-0"x7'-0"	D3	F2
120	3'-0"x7'-0"	D3	F2
121	3'-0"x7'-0"	D1	F2
122	3'-0"x7'-0"	D3	F2



805.651.3567
lynda@lilydesignbuild.com

REVISIONS:	DATE:
DESCRIPTION:	

DOOR AND WINDOW ELEVATIONS
DOOR SCHEDULE

PROJECT NO.
C_LD20_023

BROOKINGS
COUNTY TITLE

6TH ST. BROOKINGS, SD

PROJECT MANAGER
LYNDA PIERCE

DATE:
06.14.21

SHEET:

A4.2

DO NOT SCALE OFF DRAWINGS. THIS
DRAWING MAY NOT BE PRINTED TO
SCALE



RSX1 LED Area Luminaire

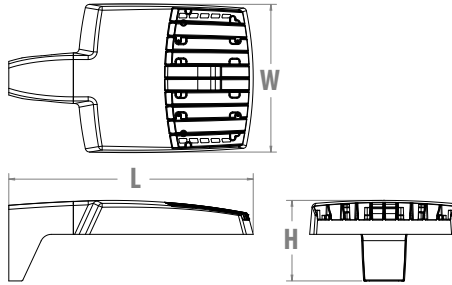


Catalog Number
Notes
Type

Hit the Tab key or mouse over the page to see all interactive elements.

Specifications

EPA (ft²@0°):	0.57 ft² (0.05 m²)
Length:	21.8" (55.4 cm) (SPA mount)
Width:	13.3" (33.8 cm)
Height:	3.0" (7.6 cm) Main Body 7.2" (18.4 cm) Arm
Weight: (SPA mount):	22.0 lbs (10.0 kg)



Introduction

The new RSX LED Area family delivers maximum value by providing significant energy savings, long life and outstanding photometric performance at an affordable price. The RSX1 delivers 7,000 to 17,000 lumens allowing it to replace 70W to 400W HID luminaires.

The RSX features an integral universal mounting mechanism that allows the luminaire to be mounted on most existing drill hole patterns. This "no-drill" solution provides significant labor savings. An easy-access door on the bottom of mounting arm allows for wiring without opening the electrical compartment. A mast arm adaptor, adjustable integral slipfitter and other mounting configurations are available.

Ordering Information

EXAMPLE: RSX1 LED P4 40K R3 MVOLT SPA DDBXD

Series	Performance Package	Color Temperature	Distribution	Voltage	Mounting
RSX1 LED	P1 P2 P3 P4	30K 3000K 40K 4000K 50K 5000K	R2 Type 2 Wide R3 Type 3 Wide R3S Type 3 Short R4 Type 4 Wide R4S Type 4 Short R5 Type 5 Wide ¹ R5S Type 5 Short ¹ AFR Automotive Front Row AFRR90 Automotive Front Row Right Rotated AFRL90 Automotive Front Row Left Rotated	MVOLT (120V-277V)² HVOLT (347V-480V) ³ XVOLT (277V-480V) ⁴ (use specific voltage for options as noted) 120 ³ 277 ⁵ 208 ³ 347 ⁵ 240 ³ 480 ⁵	SPA Square pole mounting (3.0" min. SQ pole for 1 at 90°, 3.5" min. SQ pole for 2, 3, 4 at 90°) RPA Round pole mounting (3.2" min. dia. RND pole for 2, 3, 4 at 90°, 3.0" min. dia. RND pole for 1 at 90°, 2 at 180°, 3 at 120°) MA Mast arm adaptor (fits 2-3/8" OD horizontal tenon) IS Adjustable slipfitter (fits 2-3/8" OD tenon)⁶ WBA Wall bracket ¹ WBASC Wall bracket with surface conduit box AASP Adjustable tilt arm square pole mounting ⁶ AARP Adjustable tilt arm round pole mounting ⁶ AAWB Adjustable tilt arm with wall bracket ⁶ AAWSC Adjustable tilt arm wall bracket and surface conduit box ⁶

Options	Finish
Shipped Installed HS House-side shield ⁷ PE Photocontrol, button style ^{8,9} PEX Photocontrol external threaded, adjustable ^{9,10} PER7 Seven-wire twist-lock receptacle only (no controls) ^{9,11,12,13} CE34 Conduit entry 3/4" NPT (Qty 2) SF Single fuse (120, 277, 347) ⁵ DF Double fuse (208, 240, 480) ⁵ SPD20KV 20KV Surge pack (10KV standard) FAO Field adjustable output ^{9,13} DMG 0-10V dimming extend out back of housing for external control (control ordered separate) ^{9,13}	DDBXD Dark Bronze DBLXD Black DNAXD Natural Aluminum DWHXD White DDBTXD Textured Dark Bronze DBLBXD Textured Black DNATXD Textured Natural Aluminum DWHGXD Textured White
Shipped Installed *Standalone and Networked Sensors/Controls (factory default settings, see table page 9) NLTAIR2 nLight AIR generation 2 ^{13,14,15} PIRHN Networked, Bi-Level motion/ambient sensor (for use with NLTAIR2) ^{13,15,16} BAA Buy America(n) Act Compliant *Note: PIRHN with nLight Air can be used as a standalone or networked solution. Sensor coverage pattern is affected when luminaire is tilted. Shipped Separately (requires some field assembly) EGS External glare shield ⁷ EGFV External glare full visor (360° around light aperture) ⁷ BS Bird spikes ¹⁷	



COMMERCIAL OUTDOOR

One Lithonia Way • Conyers, Georgia 30012 • Phone: 1-800-705-SERV (7378) • www.acuitybrands.com
© 2018-2021 Acuity Brands Lighting, Inc. All rights reserved.

Lithonia RSX1 Area LED
Rev. 05/04/21
Page 1 of 9

Ordering Information

Accessories

Ordered and shipped separately.

RSX1HS	RSX1 House side shield (includes 1 shield)
RSX1HSAFRR U	RSX1 House side shield for AFR rotated optics (includes 1 shield)
RSX1EGS (FINISH) U	External glare shield (specify finish)
RSX1EGFV (FINISH) U	External glare full visor (specify finish)
RSXRPA (FINISH) U	RSX Universal round pole adaptor plate (specify finish)
RSXWBA (FINISH) U	RSX WBA wall bracket (specify finish) ¹
RSXSCB (FINISH) U	RSX Surface conduit box (specify finish, for use with WBA, WBA not included)
DLL127F 1.5 JU	Photocell -SSL twist-lock (120-277V) ¹⁸
DLL347F 1.5 CUL JU	Photocell -SSL twist-lock (347V) ¹⁸
DLL480F 1.5 CUL JU	Photocell -SSL twist-lock (480V) ¹⁸
DSHORT SBK U	Shorting cap ¹⁸

NOTES

- Any Type 5 distribution, is not available with WBA.
- MVOLT driver operates on any line voltage from 120-277V (50/60 Hz).
- HVOLT driver operates on any line voltage from 347-480V (50/60 Hz).
- XVOLT driver not available with P1 or P2. XVOLT driver operates on any line voltage from 277V-480V (50/60 Hz). XVOLT not available with fusing (SF or DF) and not available with PE or PEX.
- Single fuse (SF) requires 120V, 277V or 347V. Double fuse (DF) requires 208V, 240V or 480V.
- Maximum tilt is 90° above horizontal.
- It may be ordered as an accessory.
- Requires MVOLT or 347V.
- Not available in combination with other light sensing control options (following options cannot be combined: PE, PEX, PER7, FAO, DMG, PIRHN).
- Requires 120V, 208V, 240V or 277V.
- Twistlock photocell ordered and shipped as a separate line item from Acuity Brands Controls. See accessories. Shorting Cap included. Dimming leads capped for future use.
- For units with option PER7, the mounting must be restricted to +/- 45° from horizontal aim per ANSI C136.10-2010.
- Two or more of the following options cannot be combined including DMG, PER7, FAO and PIRHN.
- Must be ordered with PIRHN.
- Requires MVOLT or HVOLT.
- Must be ordered with NLTAR2. For additional information on PIRHN visit [here](#).
- Must be ordered with fixture for factory pre-drilling.
- Requires luminaire to be specified with PER7 option. Ordered and shipped as a separate line item from Acuity Brands Controls.

External Shields



House Side Shield



External Glare Shield

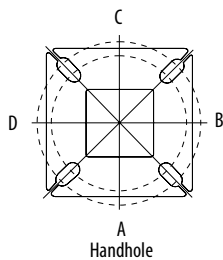


External 360 Full Visor

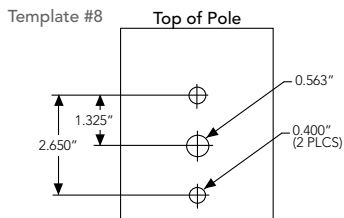
Pole/Mounting Information

Accessories including bullhorns, cross arms and other adapters are available under the accessories tab at Lithonia's Outdoor Poles and Arms product page. Click here to visit [Accessories](#).

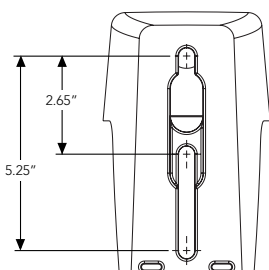
HANDHOLE ORIENTATION



RSX POLE DRILLING



RSX STANDARD ARM & ADJUSTABLE ARM



Round Tenon Mount - Pole Top Slipfitters

Tenon O.D.	RSX Mounting	Single	2 @ 180°	2 @ 90°	3 @ 120°	3 @ 90°	4 @ 90°
2 - 3/8"	RPA, AARP	AS3-5 190	AS3-5 280	AS3-5 290	AS3-5 320	AS3-5 390	AS3-5 490
2 - 7/8"	RPA, AARP	AST25-190	AST25-280	AST25-290	AST25-320	AST25-390	AST25-490
4"	RPA, AARP	AST35-190	AST35-280	AST35-290	AST35-320	AST35-390	AST35-490

Drill/Side Location by Configuration Type

Drilling Template	Mounting Option	Single	2 @ 180	2 @ 90	3 @ 120	3 @ 90	4 @ 90
	Head Location	Side B	Side B & D	Side B & C	Round Pole Only	Side B, C & D	Side A, B, C & D
#8	Drill Nomenclature	DM19AS	DM28AS	DM29AS	DM32AS	DM39AS	DM49AS

RSX1 - Luminaire EPA

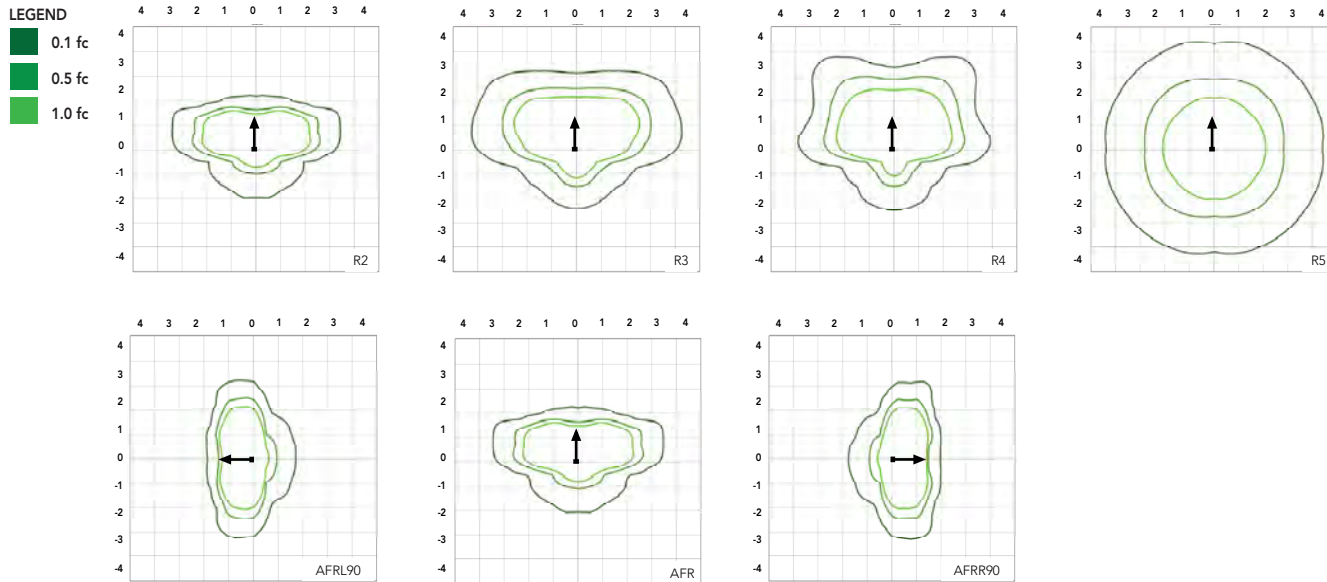
*Includes luminaire and integral mounting arm. Other tenons, arms, brackets or other accessories are not included in this EPA data.

Fixture Quantity & Mounting Configuration		Single	2 @ 90	2 @ 180	3 @ 90	3 @ 120	4 @ 90	2 Side by Side	3 Side by Side	4 Side by Side
Mounting Type	Tilt									
SPA - Square Pole Adaptor	0°	0.57	1.03	1.05	1.52	1.36	2.03	1.31	1.7	2.26
RPA - Round Pole Adaptor		0.62	1.08	1.15	1.62	1.46	2.13	1.36	1.8	2.36
MA - Mast Arm Adaptor		0.49	0.95	0.89	1.36	1.2	1.87	1.23	1.54	2.1
IS - Integral Slipfitter AASP/AARP - Adjustable Arm Square/Round Pole	0°	0.57	1.03	1.05	1.52	1.36	2.03	1.31	1.7	2.26
	10°	0.68	1.34	1.33	2	1.74	2.64	1.35	2.03	2.71
	20°	0.87	1.71	1.73	2.56	2.26	3.42	1.75	2.62	3.49
	30°	1.24	2.19	2.3	3.21	2.87	4.36	2.49	3.73	4.97
	40°	1.81	2.68	2.98	3.85	3.68	5.30	3.62	5.43	7.24
	45°	2.11	2.92	3.44	4.2	4.08	5.77	4.22	6.33	8.44
	50°	2.31	3.17	3.72	4.52	4.44	6.26	4.62	6.94	9.25
	60°	2.71	3.66	4.38	5.21	5.15	7.24	5.43	8.14	10.86
	70°	2.78	3.98	4.54	5.67	5.47	7.91	5.52	8.27	11.03
	80°	2.76	4.18	4.62	5.97	5.76	8.31	5.51	8.27	11.03
	90°	2.73	4.25	4.64	6.11	5.91	8.47	5.45	8.18	10.97

Photometric Diagrams

To see complete photometric reports or download .ies files for this product, visit Lithonia Lighting's [RSX Area homepage](#).

Isofootcandle plots for the RSX1 LED P4 40K. Distances are in units of mounting height (20').



Performance Data

Lumen Ambient Temperature (LAT) Multipliers

Use these factors to determine relative lumen output for average ambient temperatures from 0-50°C (32-122°F).

Ambient	Ambient	Lumen Multiplier
0°C	32°F	1.05
5°C	41°F	1.04
10°C	50°F	1.03
15°C	59°F	1.02
20°C	68°F	1.01
25°C	77°F	1.00
30°C	86°F	0.99
35°C	95°F	0.98
40°C	104°F	0.97
45°C	113°F	0.96
50°C	122°F	0.95

Electrical Load

Performance Package	System Watts (W)	Current (A)					
		120V	208V	240V	277V	347V	480V
P1	51W	0.42	0.25	0.21	0.19	0.14	0.11
P2	72W	0.60	0.35	0.30	0.26	0.21	0.15
P3	109W	0.91	0.52	0.45	0.39	0.31	0.23
P4	133W	1.11	0.64	0.55	0.48	0.38	0.27

Projected LED Lumen Maintenance

Operating Hours	50,000	75,000	100,000
Lumen Maintenance Factor	>0.97	>0.95	>0.92

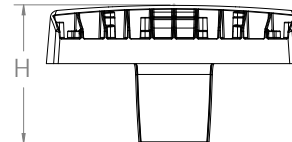
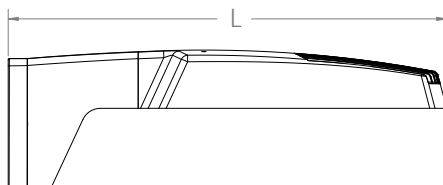
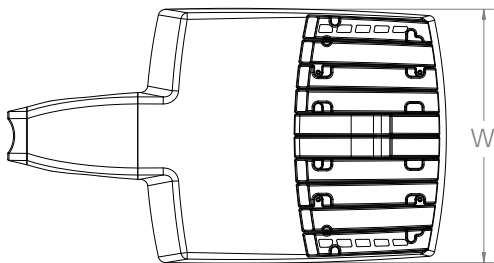
Values calculated according to IESNA TM-21-11 methodology and valid up to 40°C.

Dimensions & Weights

Luminaire Weight by Mounting Type

Mounting Configuration	Total Luminaire Weight
SPA	22 lbs
RPA	24 lbs
MA	22 lbs
WBA	25 lbs
WBASC	28 lbs
IS	25 lbs
AASP	25 lbs
AARP	27 lbs
AAWB	28 lbs
AAWSC	31 lbs

RSX1 with Round Pole Adapter (RPA)

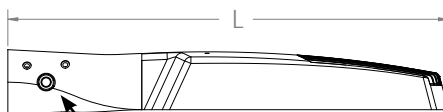
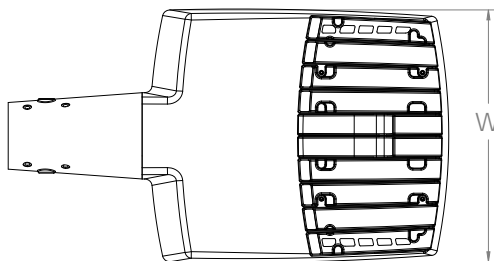


Note: RPA — Round Pole mount can also be used to mount on square poles by omitting the round pole adapter plate shown here.



Length: 22.8" (57.9 cm)
Width: 13.3" (33.8 cm)
Height: 3.0" (7.6 cm) Main Body
7.2" (18.4 cm) Arm

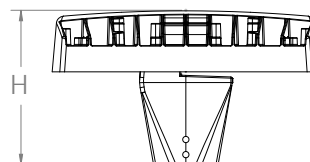
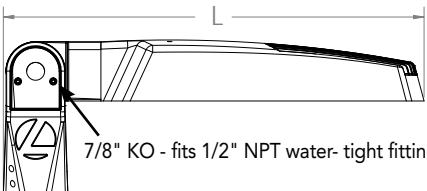
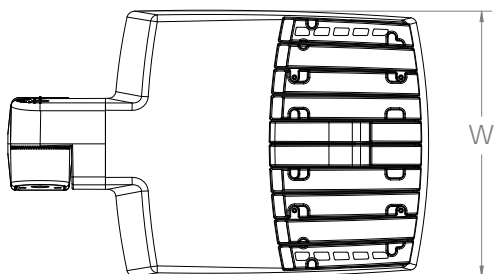
RSX1 with Mast Arm Adapter (MA)



7/16" locking thru bolt/nut provided

Length: 23.2" (59.1 cm)
Width: 13.3" (33.8 cm)
Height: 3.0" (7.6 cm) Main Body
3.5" (8.9 cm) Arm

RSX1 with Adjustable Slipfitter (IS)



7/8" KO - fits 1/2" NPT water-tight fitting

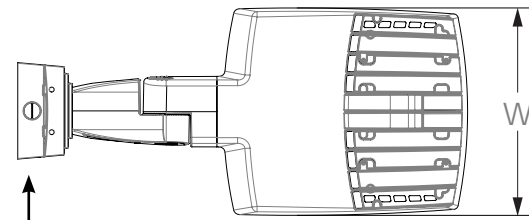
Length: 20.7" (52.7 cm)
Width: 13.3" (33.8 cm)
Height: 3.0" (7.6 cm) Main Body
7.6" (19.3 cm) Arm



COMMERCIAL OUTDOOR

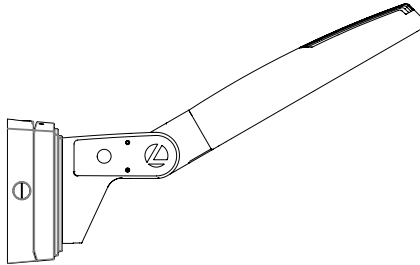
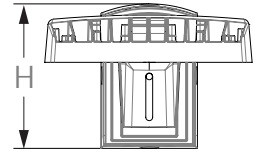
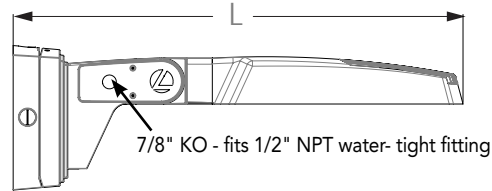
Dimensions

RSX1 with Adjustable Tilt Arm with Wall Bracket and Surface Conduit Box (AAWSC)

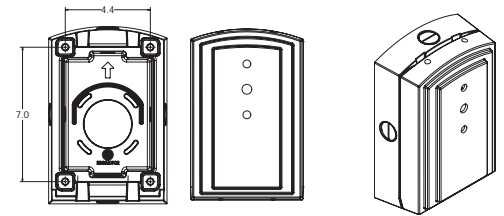


3/4" NPT taps
with plugs - Qty (4)
provided

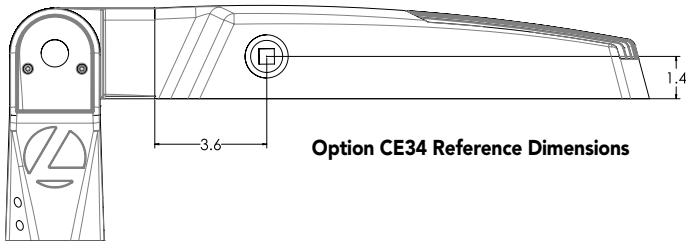
Length: 28.8" (73.2 cm)
Width: 13.3" (33.8 cm)
Height: 3.0" (7.6 cm) Main Body
9.2" (23.4 cm) Arm



Surface Conduit Box (SCB) Mounting Detail

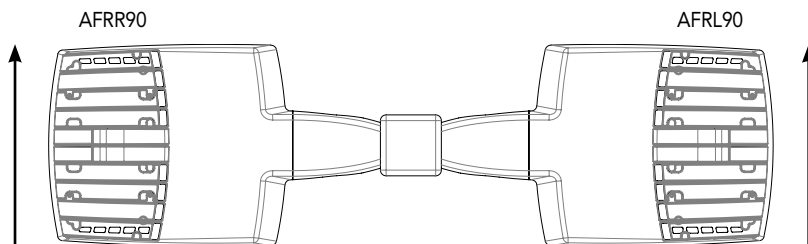


Additional Reference Drawings



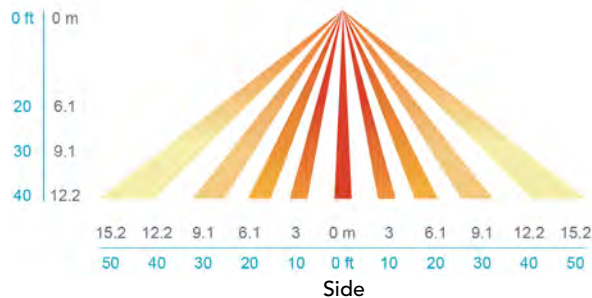
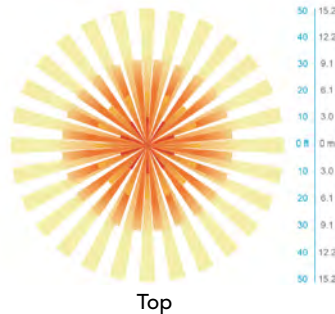
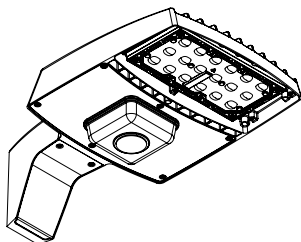
Option CE34 Reference Dimensions

Automotive Front Row - Rotated Optics (AFRL90/R90)



(Example: 2@180 - arrows indicate direction of light exiting the luminaire)

nLight Sensor Coverage Pattern NLTAIR2 PIRHN



Motion Sensor Default Settings - Option PIRHN						
Option	Dimmed State (unoccupied)	High Level (when occupied)	Photocell Operation	Dwell Time (occupancy time delay)	Ramp-up Time (from unoccupied to occupied)	Ramp-down Time (from occupied to unoccupied)
NLTAIR2 PIRHN	Approx. 30% Output	100% Output	Enabled @ 1.5FC	7.5 minutes	3 seconds	5 minutes

*Note: NLTAIR2 PIRHN default settings including photocell set-point, high/low dim rates, and occupancy sensor time delay are all configurable using the Clairity Pro App. Sensor coverage pattern shown with luminaire at 0°. Sensor coverage pattern is affected when luminaire is tilted.

FEATURES & SPECIFICATIONS

INTENDED USE

The RSX LED area family is designed to provide a long-lasting, energy-efficient solution for the one-for-one replacement of existing metal halide or high pressure sodium lighting. The RSX1 delivers 7,000 to 17,000 lumens and is ideal for replacing 70W to 400W HID pole-mounted luminaires in parking lots and other area lighting applications.

CONSTRUCTION

The RSX LED area luminaire features a rugged die-cast aluminum main body that uses heat-dissipating fins and flow-through venting to provide optimal thermal management that both enhances LED performance and extends component life. Integral "no drill" mounting arm allows the luminaire to be mounted on existing pole drillings, greatly reducing installation labor. The light engines and housing are sealed against moisture and environmental contaminants to IP66. The low-profile design results in a low EPA, allowing pole optimization. All mountings are rated for minimum 1.5 G vibration load per ANSI C136.31. 3G Mountings: Include SPA, RPA, MA, IS, AASP, and AARP rated for 3G vibration. 1.5G Mountings: Include WBA, WBASC, AAWB and AAWSC rated for 1.5G vibration.

FINISH

Exterior parts are protected by a zinc-infused Super Durable TGIC thermoset powder coat finish that provides superior resistance to corrosion and weathering. A tightly controlled multi-stage process ensures superior adhesion as well as a minimum finish thickness of 3 mils. The result is a high-quality finish that is warranted not to crack or peel.

OPTICS

Precision acrylic refractive lenses are engineered for superior application efficiency, distributing the light to where it is needed most. Available in short and wide pattern distributions including Type 2, Type 3, Type 3S, Type 4, Type 4S, Type 5, Type 5S, AFR (Automotive Front Row), and AFR rotated AFR90 and ARFL90.

ELECTRICAL

Light engine(s) configurations consist of high-efficacy LEDs mounted on metal-core circuit boards and aluminum heat sinks to maximize heat dissipation. Light engines are IP66 rated. LED lumen maintenance is >L92/100,000 hours. CCT's of 3000K, 4000K and 5000K (minimum 70 CRI) are available. Class 1 electronic drivers ensure system power factor >90% and THD <20%. Easily serviceable 10kV surge protection device meets a minimum Category C Low operation (per ANSI/IEEE C62.41.2).

STANDARD CONTROLS

The RSX LED area luminaire has a wide assortment of control options. Dusk to dawn controls include MVOLT and 347V button-type photocells and NEMA twist-lock photocell receptacles.

nLIGHT AIR CONTROLS

The RSX LED area luminaire is also available with nLight® AIR for the ultimate in wireless control. This powerful controls platform provides out-of-the-box basic motion sensing with photocontrol functionality and is suitable for mounting heights up to 40 feet. No commissioning is required when using factory default settings that provide basic stand-alone motion occupancy dimming that is switched on and off with a built-in photocell. See chart above for motion sensor default out-of-box settings. For more advanced wireless functionality, such as group dimming, nLight AIR can be commissioned using a smartphone and the easy-to-use CLAIRITY app. nLight AIR equipped luminaires can be grouped, resulting in motion sensor and photocell group response without the need for additional equipment. Scheduled dimming with motion sensor over-ride can be achieved when used with the nLight Eclipse. Additional information about nLight Air can be found [here](#).

INSTALLATION

Integral "no-drill" mounting arm allows for fast, easy mounting using existing pole drillings. Select the "SPA" option for square poles and the "RPA" option to mount to round poles. Note, the RPA mount can also be used for mounting to square poles by omitting the RPA adapter plate. Select the "MA" option to attach the luminaire to a 2 3/8" horizontal mast arm or the "IS" option for an adjustable slipfitter that mounts on a 2 3/8" OD tenon. The adjustable slipfitter has an integral junction box and offers easy installation. Can be tilted up to 90° above horizontal. Additional mountings are available including a wall bracket, adjustable tilt arm for direct-to-pole and wall and a surface conduit box for wall mount applications.

LISTINGS

CSA Certified to meet U.S. and Canadian standards. Suitable for wet locations. Rated for -40°C minimum ambient. DesignLights Consortium® (DLC) Premium qualified product and DLC qualified product. Not all versions of this product may be DLC Premium qualified or DLC qualified. Please check the DLC Qualified Products List at www.designlights.org/QPL to confirm which versions are qualified.

International Dark-Sky Association (IDA) Fixture Seal of Approval (FSA) is available for all products on this page utilizing 3000K color temperature only.

BUY AMERICAN

Product with the BAA option is assembled in the USA and meets the Buy America(n) government procurement requirements under FAR, DFARS and DOT. Please refer to www.acuitybrands.com/buy-american for additional information.

WARRANTY

5-year limited warranty. Complete warranty terms located at: www.acuitybrands.com/support/customer-support/terms-and-conditions

Note: Actual performance may differ as a result of end-user environment and application. All values are design or typical values, measured under laboratory conditions at 25 °C. Specifications subject to change without notice.

FEATURES & SPECIFICATIONS

INTENDED USE — Only customers in USA are eligible for this program.

Square Straight Steel is a general purpose light pole for up to 25-foot mounting heights. This pole provides a robust yet cost effective option for mounting area lights and floodlights.

CONSTRUCTION — **Pole Shaft:** The pole shaft is of uniform dimension and wall thickness and is made of a weldable-grade, hot-rolled, commercial-quality steel tubing with a minimum yield of 55 KSI (11-gauge, .12"), or 50 KSI (7-gauge, .18"). Shaft is one-piece with a full-length longitudinal high-frequency electric resistance weld. Uniformly square in cross-section with flat sides, small corner radii and excellent torsional qualities. Available shaft widths are 4" and 5".

Pole Top: A flush non-metallic black top cap is provided for all poles ordered without a tenon.

Handhole: A reinforced handhole with grounding provision is provided at 18" from the base on side A. Every handhole includes a cover and cover attachment hardware. The handhole has a nominal dimension of 2.5" x 5".

Base Cover: A color matched durable ABS plastic two-piece full base cover, is provided with each pole assembly.

Anchor Base/ Bolts: Anchor base is fabricated from steel that meets ASTM A36 standards. Anchor bolts are manufactured to ASTM F1554 Standards grade 55, (55 KSI minimum yield strength and tensile strength of 75-95 KSI). Top threaded portion (nominal 12") is hot-dipped galvanized per ASTM A-153.

HARDWARE — All structural fasteners are high-strength galvanized carbon steel. All non-structural fasteners are galvanized or zinc-plated carbon steel or stainless steel.

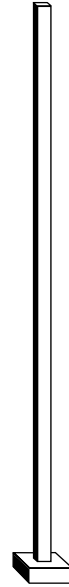
FINISH — Exterior parts are protected by a TGIC or Urethane polyester powder coat finish that provides superior resistance to corrosion and weathering. A tightly controlled multi-stage process ensures superior adhesion as well as a minimum finish thickness of 3 mils. Extra durable standard powder-coat finishes include Dark Bronze, Black and Natural Aluminum colors.

WARRANTY — 1-year limited warranty. Complete warranty terms located at:

www.acuitybrands.com/support/warranty/terms-and-conditions

NOTE: Actual performance may differ as a result of end-user environment and application. Specifications subject to change without notice.

Catalog Number
Notes
Type



SSS QS

SQUARE STRAIGHT STEEL – QUICK SHIP

ORDERING INFORMATION

Example: SSS QS 20 4C DM19AS DDBXD

SSS	QS					
Series	Quick Ship	Pole Length (FT)	Nominal shaft size/ wall thickness¹	Mounting	Finish	Options
SSS	QS	10 10' 12 12' 14 14' 16 16' 18 18' 20 20' 25 25'	4C 4" / 11 Gauge 4G 4" / 7 Gauge 5C 5" / 11 Gauge 5G 5" / 7 Gauge	Tenon mounting PT Open top (includes top cap) T20 2-3/8" O.D. (2" NPS) DSX/RSX Drill mounting² DM19AS 1 at 90° DM28AS 2 at 180° DM29AS 2 at 90° DM39AS 3 at 90° DM49AS 4 at 90° ESX Drill mounting² DM19ESX 1 at 90° DM28ESX 2 at 180° DM29ESX 2 at 90° DM39ESX 3 at 90° DM49ESX 4 at 90°	DDBXD Dark bronze DBLXD Black DNAXD Natural aluminum	L/AB Less anchor bolts (Include when anchor bolts are not provided)

PROGRAM RULES:

- Only options listed in the ordering tree are valid for the Quick Ship program.
- Nomenclature must include "QS" after "SSS" to be qualified for Quick Ship.
Example: SSS QS 20 4C DM19AS DDBXD
- Total order quantity cannot exceed 10 poles.
- Anchor bolts will be shipped separately.
- Quick Ship orders cannot have "Not Before Date" or "Ship Date".
- Quick ship orders cannot have standard pole lines.
- All pole orders must include "Call Before Number" to avoid delays.

NOTES:

- Wall thickness will be signified with a "C" (11 Gauge) or a "G" (7-Gauge) in nomenclature. "C" - 0.12" | "G" - 0.18".
- Refer to the luminaire spec sheet for the correct drilling template pattern and orientation compatibility.

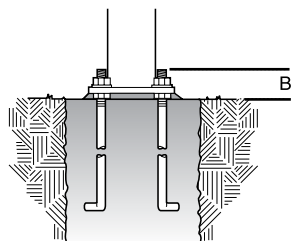
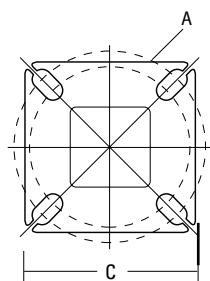
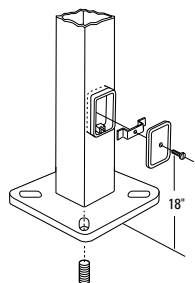
Square Straight Steel Poles – QUICK SHIP

TECHNICAL INFORMATION — EPA (ft ²) with 1.3 gust													
Catalog Number	Nominal Shaft Length (ft.)	Pole Shaft Size (Base in. x Top in. x ft.)	Wall thick (in)	Gauge	EPA (ft ²) with 1.3 gust						Bolt circle (in)	Bolt size (in. x in. x in.)	Approximate ship weight (lbs.)
					80 MPH	Max. weight	90 MPH	Max. weight	100 MPH	Max. weight			
SSS QS 10 4C	10	4.0 x 10.0	0.1196	11	30.6	765	23.8	595	18.9	473	8–9	3/4 x 18 x 3	75
SSS QS 12 4C	12	4.0 x 12.0	0.1196	11	24.4	610	18.8	470	14.8	370	8–9	3/4 x 18 x 3	90
SSS QS 14 4C	14	4.0 x 14.0	0.1196	11	19.9	498	15.1	378	11.7	293	8–9	3/4 x 18 x 3	100
SSS QS 16 4C	16	4.0 x 16.0	0.1196	11	15.9	398	11.8	295	8.9	223	8–9	3/4 x 18 x 3	115
SSS QS 18 4C	18	4.0 x 18.0	0.1196	11	12.6	315	9.2	230	6.7	168	8–9	3/4 x 18 x 3	125
SSS QS 20 4C	20	4.0 x 20.0	0.1196	11	9.6	240	6.7	167	4.5	150	8–9	3/4 x 18 x 3	140
SSS QS 20 4G	20	4.0 x 20.0	0.1793	7	14	350	11	275	8	200	8–9	3/4 x 30 x 3	198
SSS QS 20 5C	20	5.0 x 20.0	0.1196	11	17.7	443	12.7	343	9.4	235	10–12	1 x 36 x 4	185
SSS QS 20 5G	20	5.0 x 20.0	0.1793	7	28.1	703	21.4	535	16.2	405	10–12	1 x 36 x 4	265
SSS QS 25 4C	25	4.0 x 25.0	0.1196	11	4.8	150	2.6	100	1	50	8–9	3/4 x 18 x 3	170
SSS QS 25 4G	25	4.0 x 25.0	0.1793	7	10.8	270	7.7	188	5.4	135	8–9	3/4 x 30 x 3	245
SSS QS 25 5C	25	5.0 x 25.0	0.1196	11	9.8	245	6.3	157	3.7	150	10–12	1 x 36 x 4	225
SSS QS 25 5G	25	5.0 x 25.0	0.1793	7	18.5	463	13.3	333	9.5	238	10–12	1 x 36 x 4	360

* EPA values are based on ASCE 7-93 wind map.

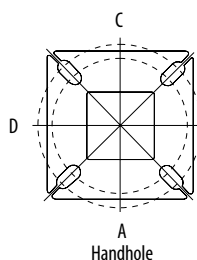
Plugs Nomenclature	Description
PL DT20	ESX Drillings
PL DT8	DSX/RSX Drillings

BASE DETAIL



POLE DATA						
Shaft base size	Bolt circle A	Bolt projection B	Base diameter C	Base plate thickness	Anchor bolt and template number	Anchor bolt description
4"C	8" – 9"	3.25"– 3.75"	8"– 8.25"	0.75"	ABSSS-4C	3/4"x18"x3"
4"G	8" – 9"	3.38"– 3.75"	8"– 8.25"	0.875"	ABSSS-4G	3/4"x30"x3"
5"	10" – 12"	3.5"– 4"	11"	1"	ABSSS-5	1"x36"x4"

HANDHOLE ORIENTATION



Default DM19AS is on side B.

IMPORTANT INSTALLATION NOTES:

- **Do not** erect poles without having fixtures installed.
- Factory-supplied templates must be used when setting anchor bolts. Lithonia Lighting will not accept claim for incorrect anchorage placement due to failure to use Lithonia Lighting factory templates.
- If poles are stored outside, all protective wrapping must be removed immediately upon delivery to prevent finish damage.
- Lithonia Lighting is not responsible for the foundation design.

Catalog Number
Notes
Type

FEATURES & SPECIFICATIONS

INTENDED USE — For steel or concrete poles.

CONSTRUCTION — Steel: Body is galvanized steel tube (per ASTM A-123) constructed from A500 Grade B steel. Welding follows industry standards best practices. Arms are galvanized after fabrication.

Must specify finish. Optional polyester powder and red primer paint finishes available

INSTALLATION — Mounting hardware included..

WARRANTY — 1-year limited warranty. Complete warranty terms located at:

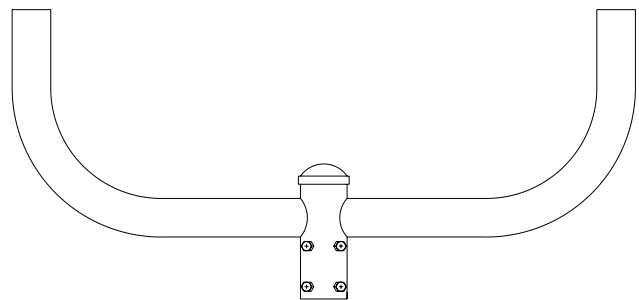
www.acuitybrands.com/CustomerResources/Terms_and_conditions.aspx

NOTE: Actual performance may differ as a result of end-user environment and application. Specifications subject to change without notice.

Round Bullhorn

BS

STEEL (BS) ROUND BULLHORN



(See next pages for dimensions and drawings.)

ORDERING INFORMATION

Lead times will vary depending on options selected. Consult with your sales representative.

Example: BS28 T20 TD25 DDB

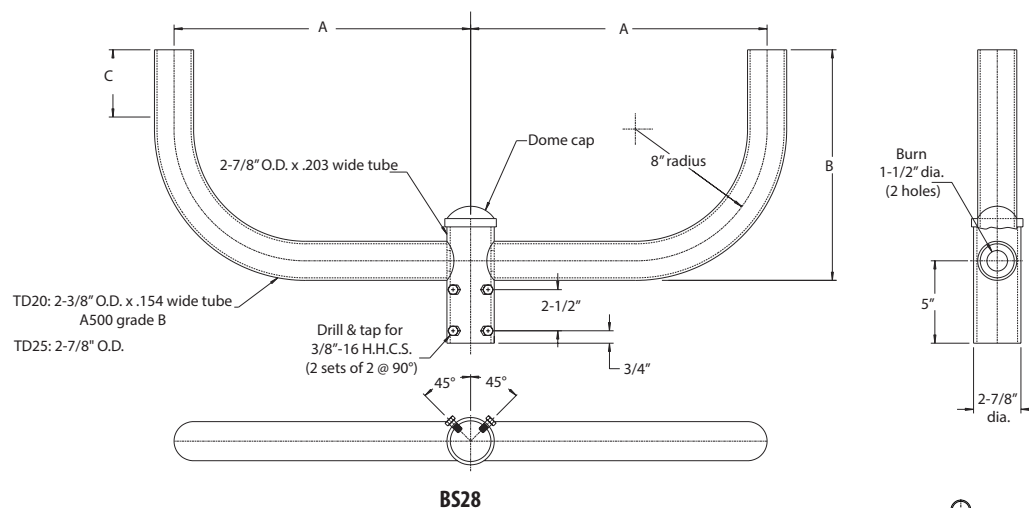
Series	Pole tenon size ²	Fixture tenon slipfitter size ³	Finish ⁴
BS28 2 in line	T20 2-3/8" O.D.	TD20 2-3/8" O.D.	Standard colors
BS29 2 at 90°	T25 2-7/8" O.D.	TD25 2-7/8" O.D.	DDB Dark bronze
BS32 3 at 120°	T35 4" O.D.		DWH White
BS38 3 in line			DBL Black
BS38X 3 in line ¹			DNA Natural aluminum
BS39 3 at 90°			GALV Galvanized steel
BS48 4 in line			Primer finish
BS49 4 at 90°			DPRM Red primer

NOTES:

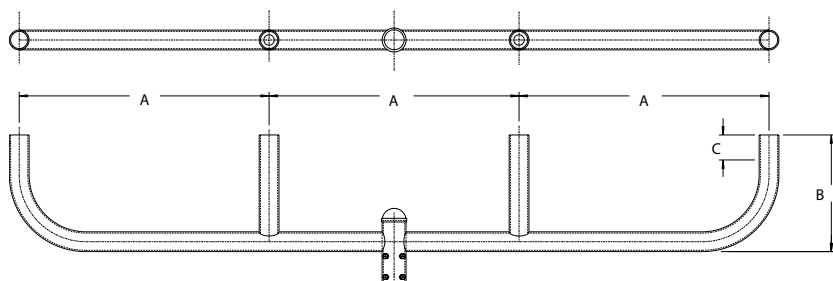
- Center tenon has extended height.
- Required: Size of tenon on pole.
- Required: TD20 or TD25. Tubing O.D will be the same for all tenons on the specified bullhorn. Reference fixture spec sheet for O.D. requirements.
- Finish must be specified. Additional colors available; see www.lithonia.com/archcolors or the Architectural Colors brochure (Form No. 794.3).

BS Bullhorn, Steel, Fiberglass or Concrete Poles

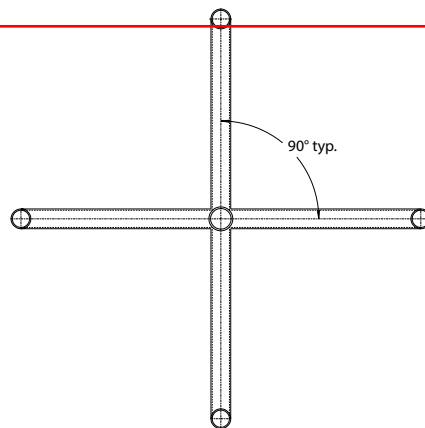
DIMENSIONS — Dimensions table next page



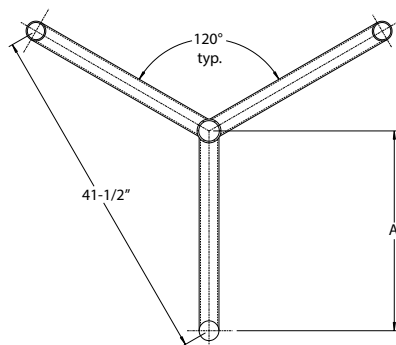
BS28



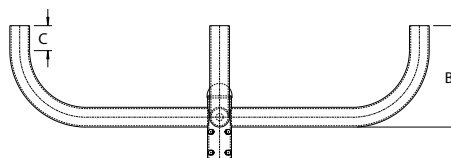
BS48



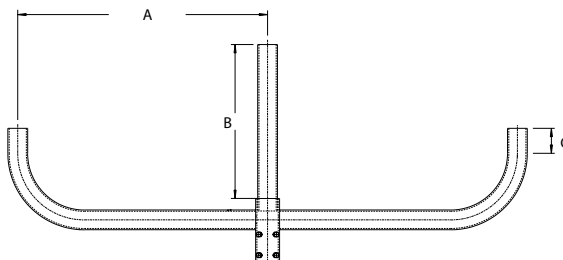
BS49



BS32



BS38



BS38X

Photos of nearby buildings

Property Address: 418 6th Street (corner of 6th street and 5th Ave.)



Apartment building along west property line



First Bank & Trust located across 5th Avenue to the east



Newman's convenience store located across the intersection to the northeast



Office building and rental properties located across 6th street to the north