

Progress Report February 2021



20th Street Interchange

- Project information available at www.20thstinterchange.com
- Recent Updates
 - *Environmental Assessment: Finding of No Significant Impact (FONSI) – Posted to website*
 - *Preparing Land Appraisals*
- Next Steps
 - *Land owner meetings/offers: Approx. March*
 - *Continue Project Design*
 - *95% Cost Est – early March*
 - *Certifications/Final Plans/ROW: June 2021*
 - *Bid Project – Fall 2021*
 - *Construction – 2022 – 2023*





I-29 Exit 130 (20th Street South) Interchange Project

[HOME](#) [SCHEDULE](#) [RESOURCES](#) [CONTACT US](#)

New Presentation Now Available!

A presentation on the draft Environmental Assessment is available for review. Click on the button below to view the presentation.

[View the Presentation](#)

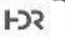



I-29 Exit 130 (20th Street S.) Interchange Project (EM 0295/45/130 PCN 020V)

October 19, 2020
Draft Environmental Assessment Release

Private donors  

Welcome to the I-29 Exit 130 (20th Street S) Interchange Project

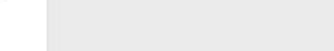
The project involves an Interchange Justification Report, Environmental Assessment, design plans, and right-of-way acquisition for a new I-29 interchange at 20th Street South in Brookings, SD.




ENVIRONMENTAL ASSESSMENT



SECTION 4(F) PROPERTY AND DE MINIMIS IMPACT MEMO



OCTOBER 19, 2020 PRESENTATION



SUBMIT A COMMENT

LATEST NEWS

Draft Environmental Assessment Released

October 19, 2020

The draft Environmental Assessment (EA) and appendices are available for review and comment.

View the [Environmental Assessment](#)

View the [Presentation](#)

Comments are due by November 19, 2020.

Website Comments and Responses Posted

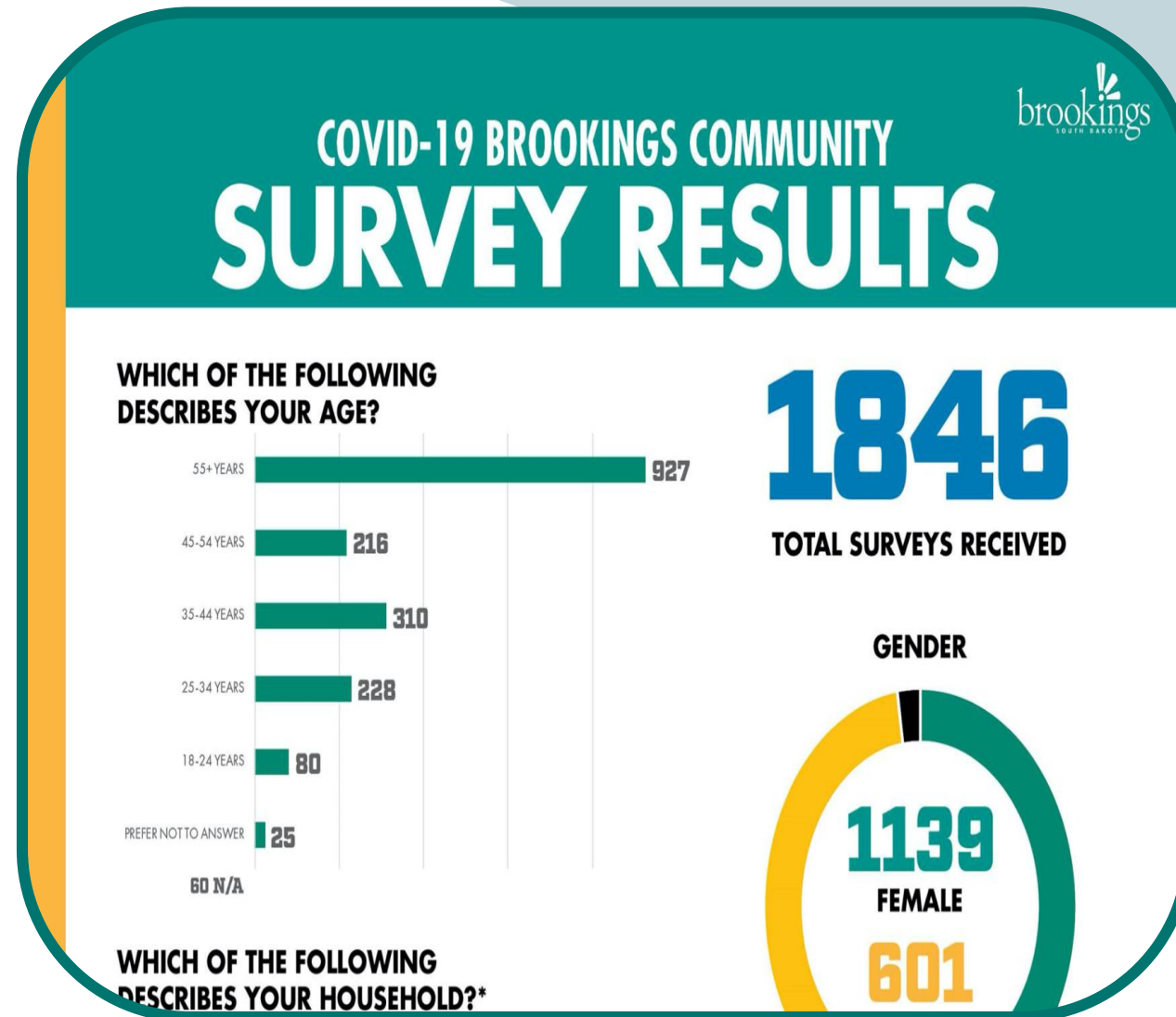
June 12, 2020

Comments submitted to the web site and the responses are available for review.

To protect the privacy of those who submit comments, we are not showing names.

COVID-19 Community Survey

- Learn about experiences, concerns, and access to resources
- Distributed via mail and online
- 1,846 total residents took survey
- Survey highlights:
 - *65% moderately or extremely concerned about COVID*
 - *79% experienced moderate or extreme change in lifestyle*
 - *92.5% indicated they are receiving all information necessary on COVID-19 and how to slow the spread*



Native Plant Landscaping

- City and South Dakota State University (SDSU) collaboration
 - *SDSU native plants initiative has funds to provide plants*
 - *City Parks*
 - *City/County Government Center Drainage Area*
- Benefits
 - *Stormwater Management*
 - *Pollinators*
 - *Decreased maintenance over time*



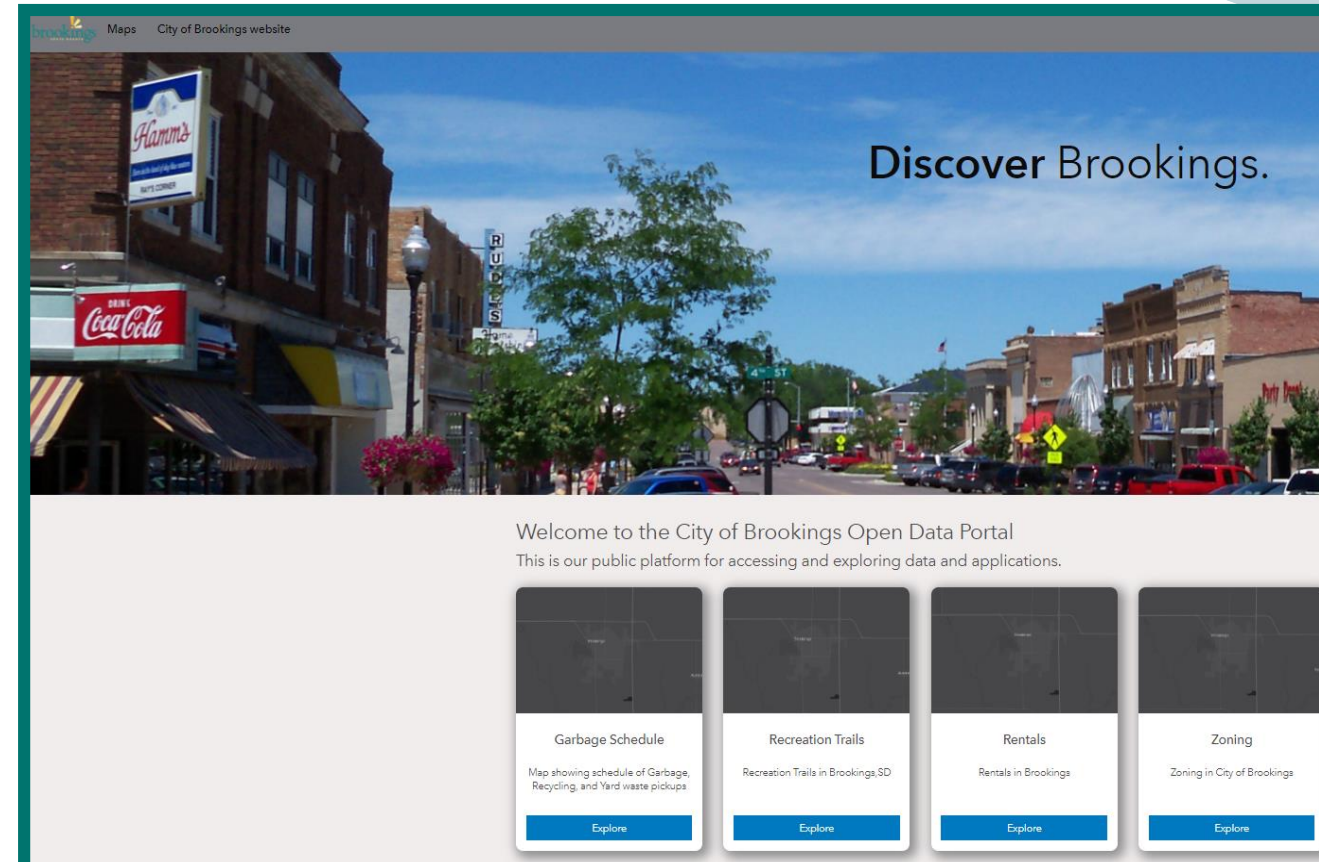
Combined Municipal/School Board

- Municipal Election Positions
 - *One (1) – Mayor (3-Year Term)*
 - *Two (2) – City Council Members (3-Year Term)*
- Petition Filing Deadline – February 26, 2021 by 5pm
- Election Day – April 13, 2021
- Government → Elections



Geographic Information System (GIS)

- Mapping tool for data management and analysis
- Benefits
 - *Public Information*
 - *Provides a visual component*
 - *Another way to look at community, neighborhoods and services*
- Numerous Maps Available
- Community & Visitors → City Maps



Police

- 2021 Budgeted Squads Ordered
- Patrol
 - *One (1) Sedan – Dodge Charger*
 - *One (1) SUV – Dodge Durango*
- Investigations
 - *One (1) SUV – Chevy Tahoe*
- Delivery
 - *Investigations – Late February*
 - *Patrol – Early March*



Swiftel Center

- Tri-Co Dart Tournament
 - *January 22 – 24*
 - *1,700 attendees*
- Several wedding tastings

