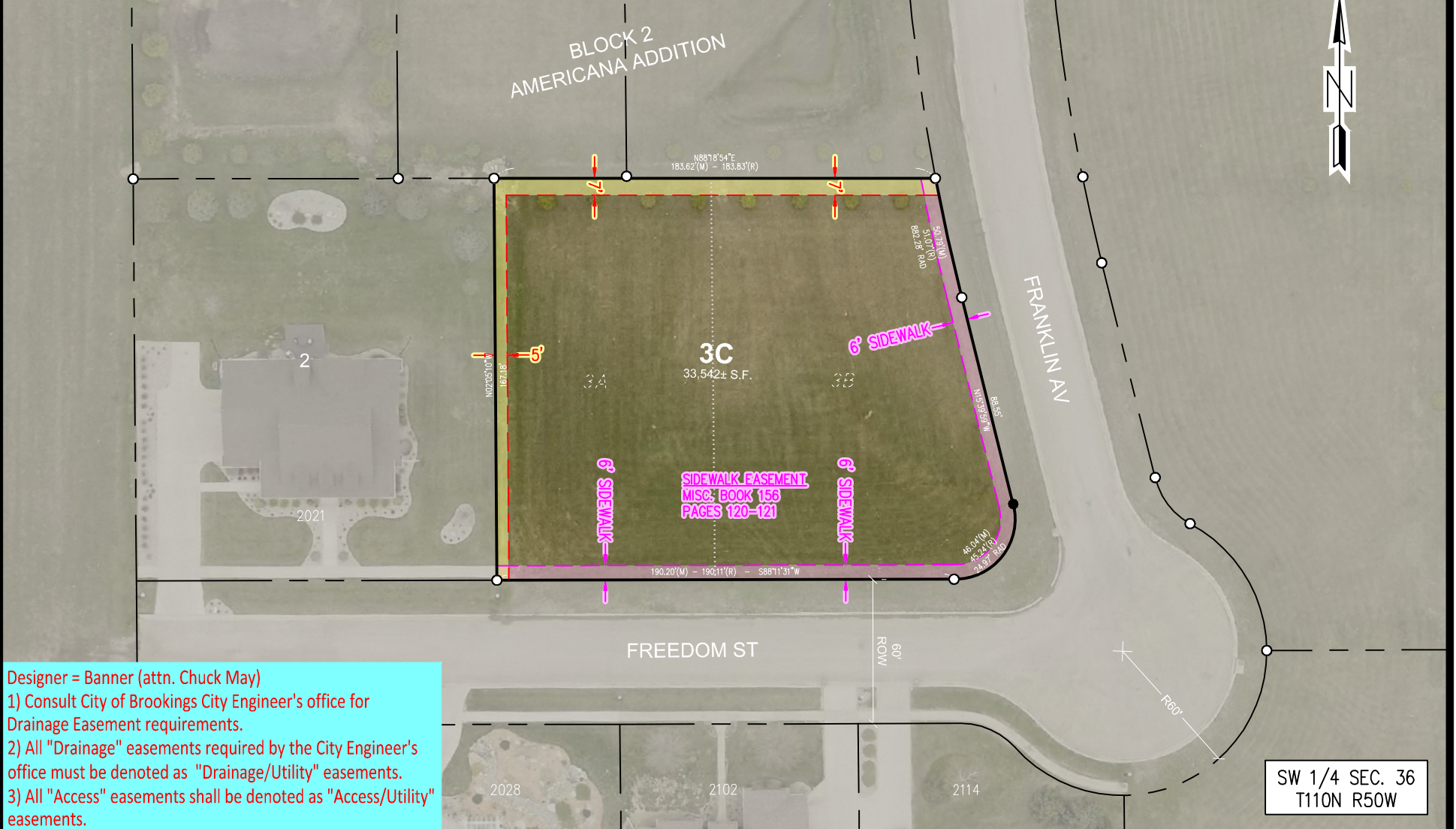


- 1) Additional BMU easements for water and sewer main may be necessary depending on the site plan developed by the Owner.
- 2) Consult BMU for Water and Sewer easement requirements when developing proposed site plan.



Designer = Banner (attn. Chuck May)

- 1) Consult City of Brookings City Engineer's office for Drainage Easement requirements.
- 2) All "Drainage" easements required by the City Engineer's office must be denoted as "Drainage/Utility" easements.
- 3) All "Access" easements shall be denoted as "Access/Utility" easements.

DRAWN BY: JBP	SUPV APP'D: CEB	UTILITY EASEMENTS FOR THE PROPOSED PLATTING OF LOT 3C, BLK. 2, AMERICANA ADDITION (REPLAT OF LOTS 3A & 3B)	DATE: 2/24/2020	SHT 1 OF 1
SUPV APP'D: DRM	SUPV APP'D: RLS		SCALE: 1" = 60'	
MGR APP'D: RDH	MGR APP'D: CAK		PlatEasements—AmericanaBlk02Lot3C	