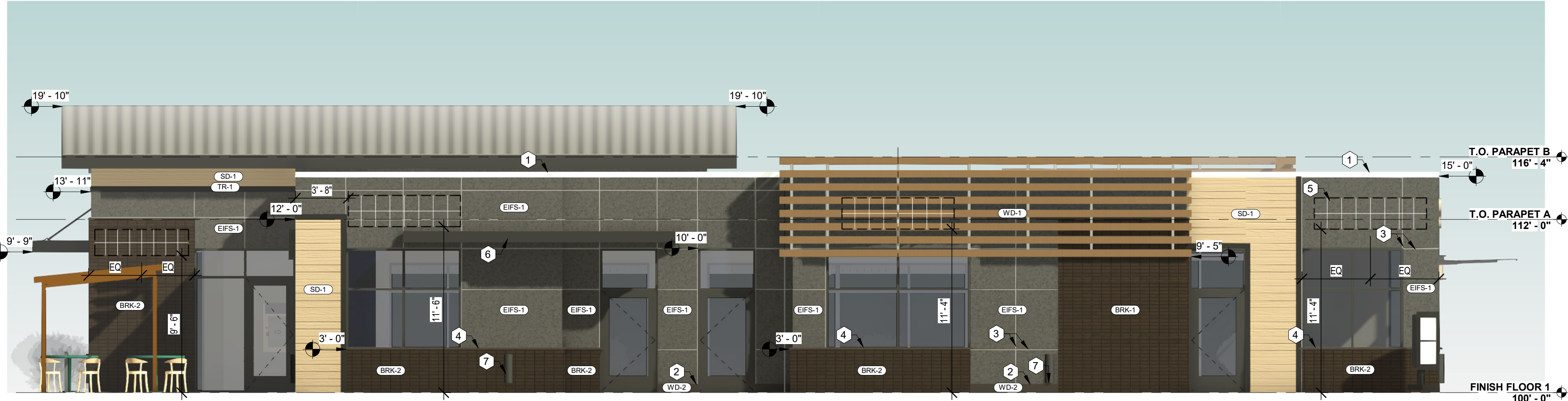
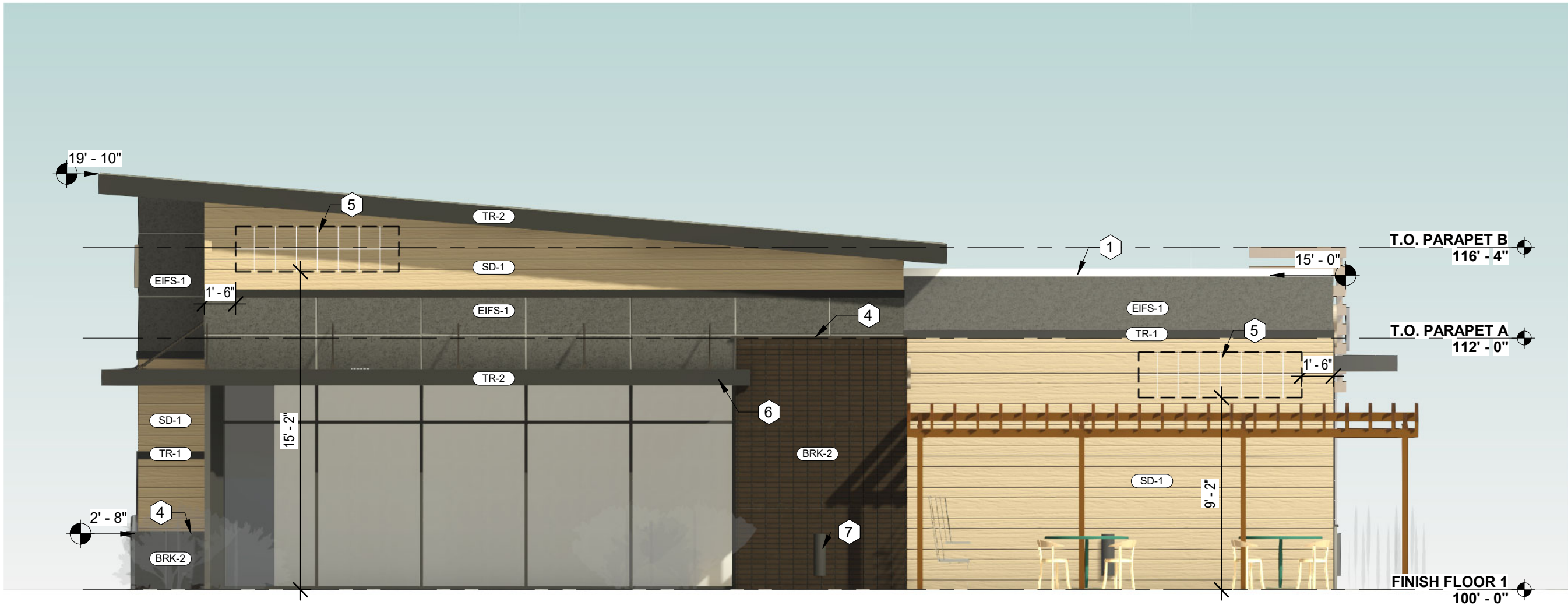


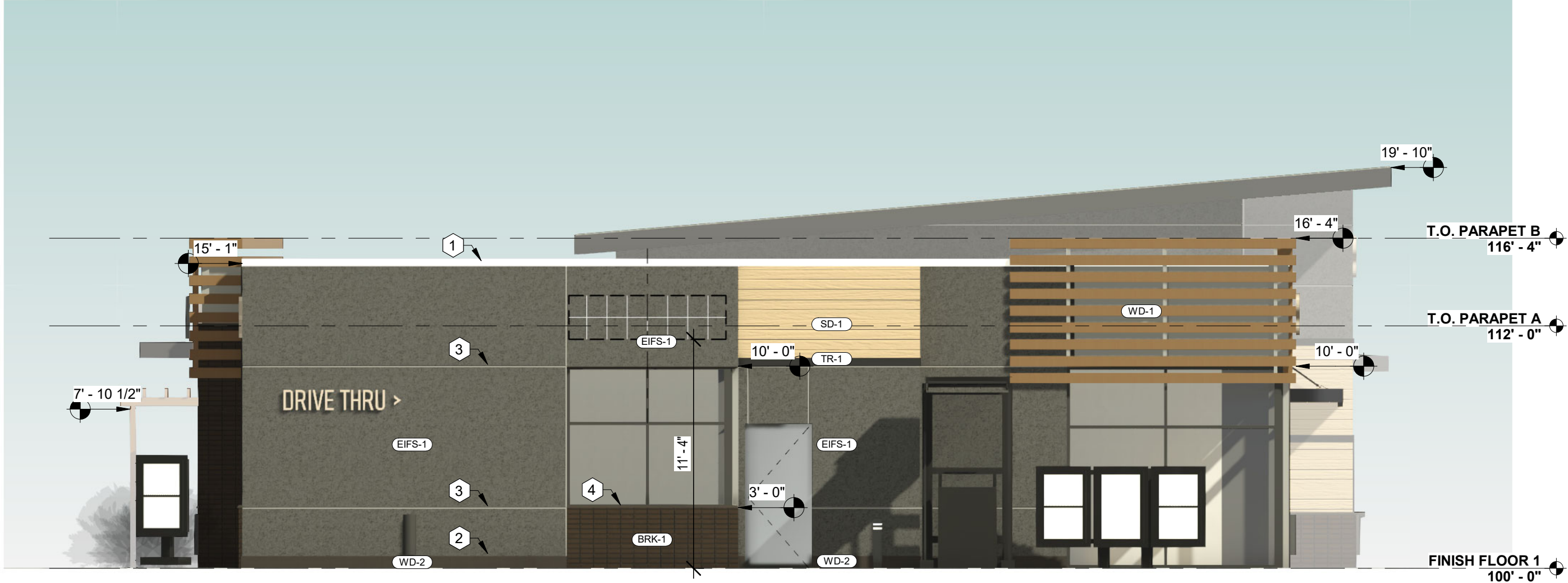
1 EAST ELEVATION
3/16" = 1'-0"



3 WEST ELEVATION
3/16" = 1'-0"



2 NORTH ELEVATION
3/16" = 1'-0"



4 SOUTH ELEVATION
3/16" = 1'-0"

GENERAL NOTES - BUILDING ELEVATIONS

- A. EXTERIOR LIGHTING INDICATED FOR PLACEMENT ONLY. SEE ELEC. FOR LIGHTING SPECIFICATIONS.
- B. SEE SPECIFICATIONS FOR FULL REQUIREMENTS FOR EXTERIOR BUILDING MATERIALS. MATERIALS INDICATED GENERICALLY ON PLANS FOR CLARITY.
- C. INSTALL ALL EXTERIOR BUILDING PRODUCTS PER MANUFACTURER'S RECOMMENDATIONS. REPORT ANY DISCREPANCIES TO ARCHITECT IMMEDIATELY.

KEYNOTES - BUILDING ELEVATIONS

- 1. PREFINISHED METAL PARAPET CAP FLASHING.
- 2. 8" TRIM BOARD.
- 3. EIFS 3/4" V-GROOVE CONTROL JOINT.
- 4. CAST-STONE BELT COURSE / SILL CAP. SEE TYPICAL DETAILS.
- 5. 17SQ.FT. (EA.) BUILDING SIGNAGE, SHOWN ON DRAWINGS FOR LOCATION REFERENCE ONLY. DESIGN BY OTHERS. SEE AC1.1. FOR SIGNAGE REQ. AND CALCULATIONS.
- 6. STEEL STRUCTURE CANOPY.
- 7. EXTERIOR WALL LIGHTING.

EXTERIOR MATERIALS LEGEND

MATERIAL ABBREVIATION	MATERIAL DESCRIPTION
BRK-1	BRICK VENEER
EIFS-1	EIFS FINIS
SD-1	WOOD SIDING
TR-1	WOOD TRIM
WD-1	WOOD PANELS
WD-2	WOOD TRIM

PLANTING SCHEDULE

TAG	COUNT	DESCRIPTION
LAN-A	11	PINK DOGWOOD. (TREES)
LAN-B	20	BOXWOOD (SHRUBS)
LAN-C	28	JUNIPER (SHRUBS)

LIGHTING SCHEDULE

TAG	COUNT	DESCRIPTION
LTG-1	2	LED POLE LIGHT; COOPER PRV-XL-PA3A-740-U-T3-BX OR EQUAL
LTG-2	8	LED EXTERIOR CYLINDER FLOOD LIGHT; LANTERRA 9002 OR EQUAL



Architecture | Planning | Interiors

434 5th Street, Suite 1
Brookings, SD 57006 | P: 605.692.4008

P.O. BOX 2553
Sioux Falls, SD 57101 | P: 605.692.4008

STAMP:

PRELIMINARY
PLANS

NOT FOR
CONSTRUCTION

REVISIONS:
NO. | DESCRIPTION:
DATE:

SHEET NAME:
BUILDING ELEVATIONS

PROJECT NO.
DA22_032

MACKENZIE
BUILDING

BROOKINGS, SD

PROJECT MANAGER:
MATTHEW WEISS

DATE:
07/26/2022

SHEET:

A4.1

FINAL DEVELOPMENT PLAN
- NOT FOR CONSTRUCTION

FULL-SCALE: 24x36
HALF-SCALE: 12x18
DRAWING MAY NOT BE PRINTED TO SCALE