

Additional Narrative



Fig.1 Looking North at front of 805 4th St



Fig. 2. Looking East side of main house at 805 4th St.



Fig.3. Looking at West side of main house at 805 4th St.



Fig.4. Looking at North exterior wall of porch located on main house at 805 4th Street
Note: 3 double -hung windows on upper level to be replaced.



Fig.5. Looking at East exterior wall of porch located on North end of main house at 805 4th Street

Note: 3 double -hung windows on upper level to be replaced.



Fig.6. Looking at North exterior wall of porch located on main house at 805 4th Street
Note: 3 double -hung windows on upper level to be replaced.



Fig.7. Looking at West exterior wall of porch located on main house at 805 4th Street

Note: 3 double -hung windows on upper level to be replaced.



Fig.8. Looking at East interior wall of porch located on main house at 805 4th Street
Note: 3 double -hung windows with wood paneling and ceiling to be replaced insulated



Fig.9. Looking at North interior wall of porch located on main house at 805 4th Street
Note: 3 double -hung windows with wood paneling and ceiling to be replaced insulated



Fig.10. Looking at West interior wall of porch located on main house at 805 4th Street
Note: 3 double -hung windows with wood paneling and ceiling to be replaced insulated

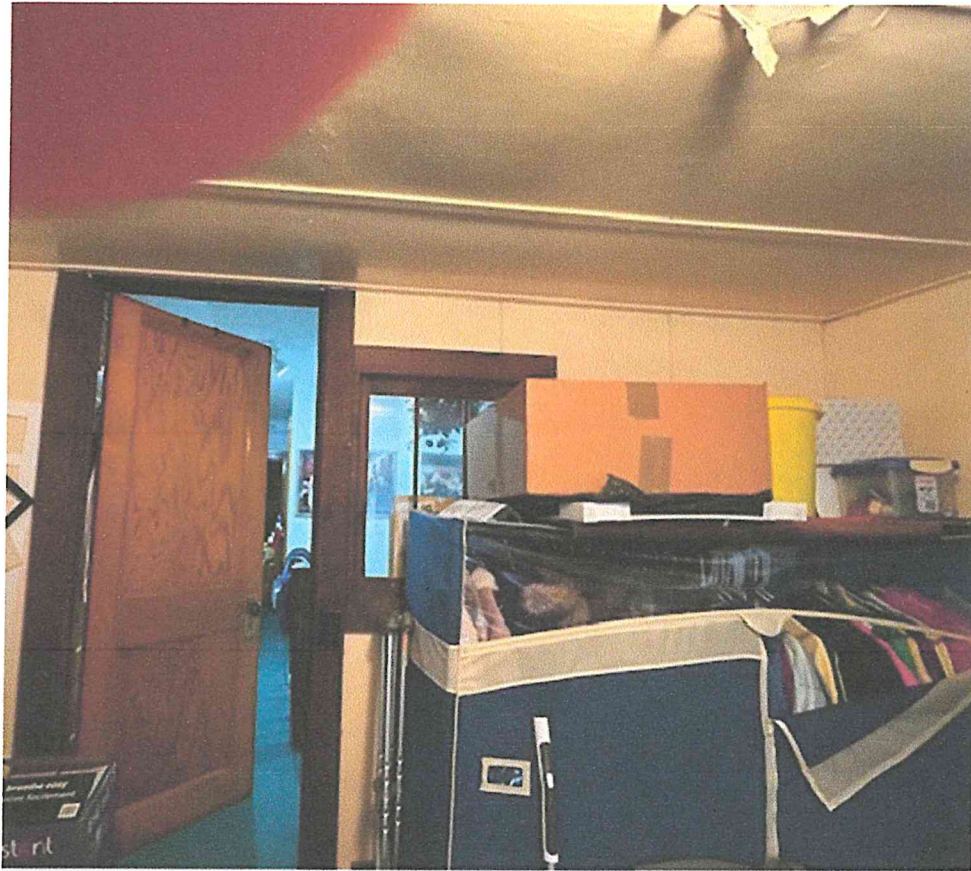


Fig.11. Looking at South interior wall of porch located on main house at 805 4th Street
Note: wood paneling and ceiling to be replace/ insulated



Fig.12. Looking at South exterior wall of main house at 805 4th Street

Note: Two windows swing inwards with 2 sliding glass screen exterior storm windows.



Fig.13. Looking at South exterior wall of main house at 805 4th Street

Note: Two windows swing inwards with 2 sliding glass screen exterior wall.



Fig.14. Close up of one window shown in Fig.11 and Fig.12

**Note: This shows interior wood window and exterior storm windows.
Hanging in windows are Xmas lights which have not been removed.**