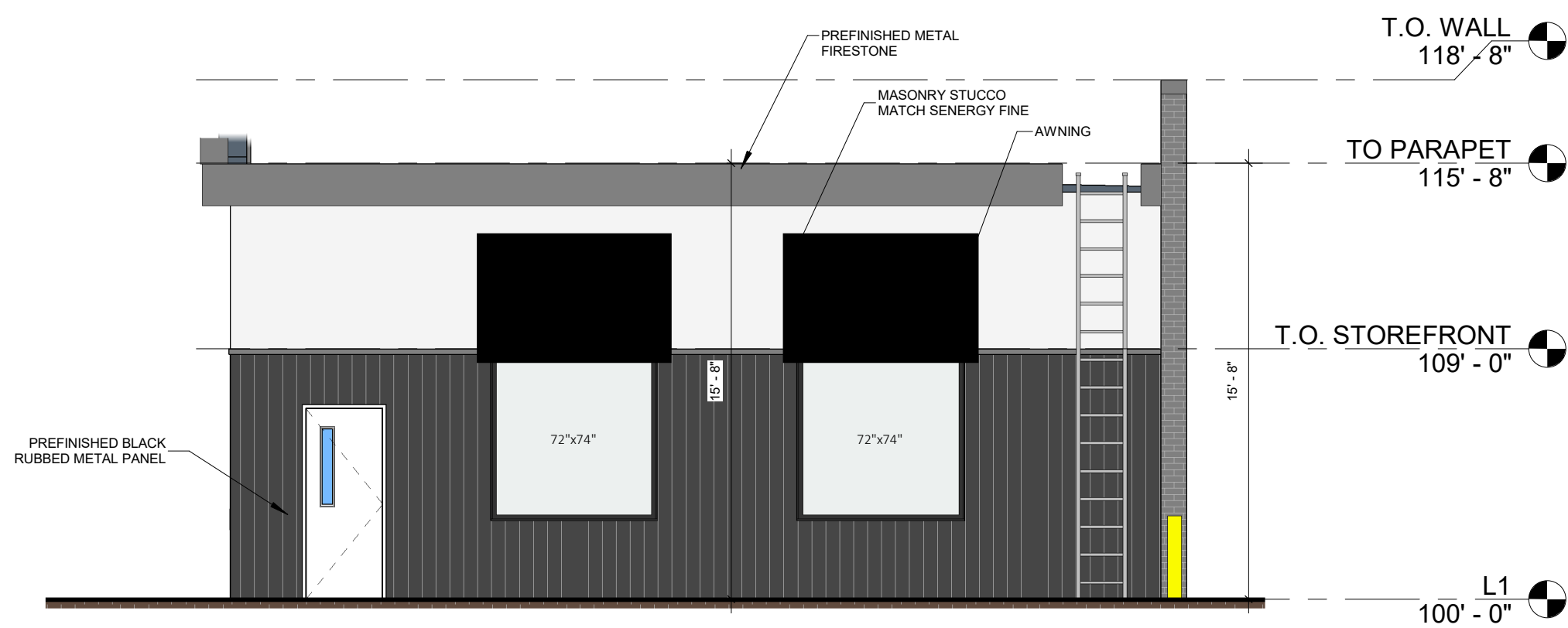
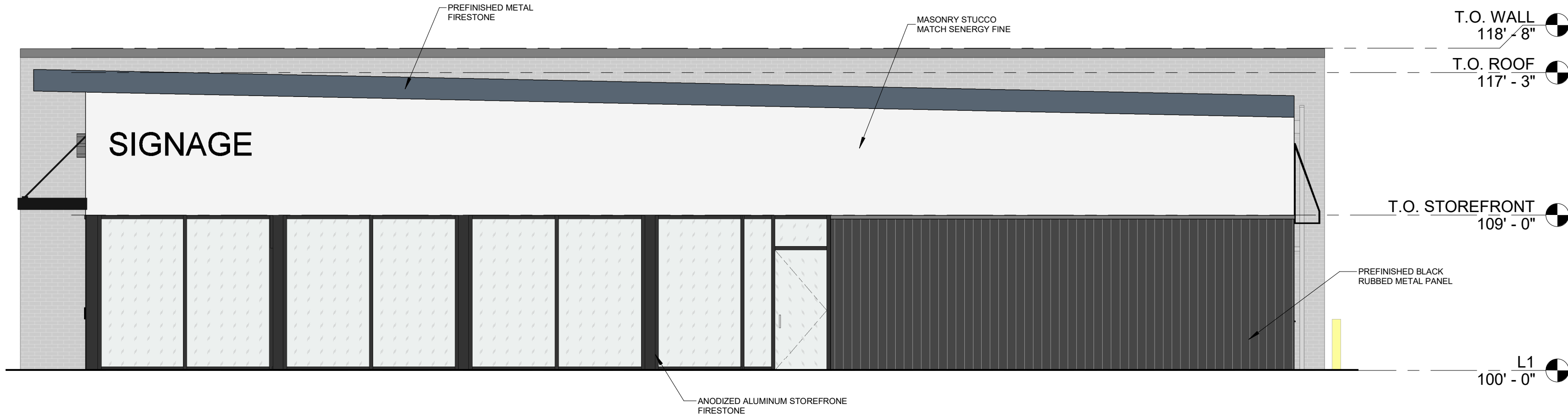


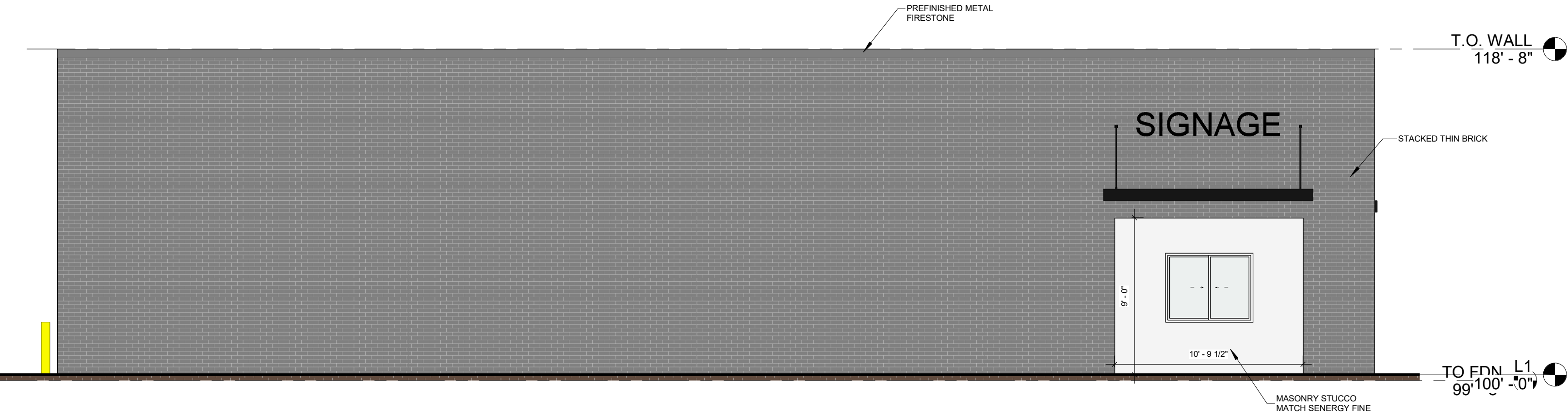
① BLDG 1 - NORTH ELEV. (PARKING)
3/16" = 1'-0"



③ BLDG 1 - SOUTH ELEV. (HWY 14)
3/16" = 1'-0"



② BLDG 1 - WEST ELEV. (LE FEVRE)
3/16" = 1'-0"



④ BLDG 1 - EAST ELEV. (DRIVE-UP)
3/16" = 1'-0"

VARIANCES REQUESTED:

- SEC 94-165.7 (d): REQUESTING THE REQUIREMENT OF TOTAL AREA OF WINDOWS AND DOORS ON THE STREET-FACING FACADE, INCLUDING TRIM, BE MODIFIED FROM 20% TO INCLUDE THE AWNINGS IN THE CALCULATION IN ORDER TO ALLOW FOR BETTER PROPORTIONS OF GLASS TO THE BUILDING FACADE WITHOUT THE GLASS EXTENDING INTO THE TRUSS SPACE.
- 1. TOTAL STREET-FACING AREA: 538 SF
- 2. GLASS AREA: 72 SF (13.4%)
- 3. AWNING AREA: 65 SF (12%)
- 4. TOTAL COMBINED: 25.4%



ID8 ARCHITECTURE, LLC
418 MAIN AVE. SUITE 1
BROOKINGS, SD 57006
(W)WWW.ID8ARC.COM

DATE		04.01.25
NO.	DESCRIPTION	DATE

JAVA PROPERTIES
BROOKINGS, SD

ALL DIMENSIONS & SIZE DESIGNATIONS ARE SUBJECT TO VERIFICATION ON THE JOBSITE AND ADJUSTMENTS TO FIT JOB CONDITIONS AS DEEMED NECESSARY.

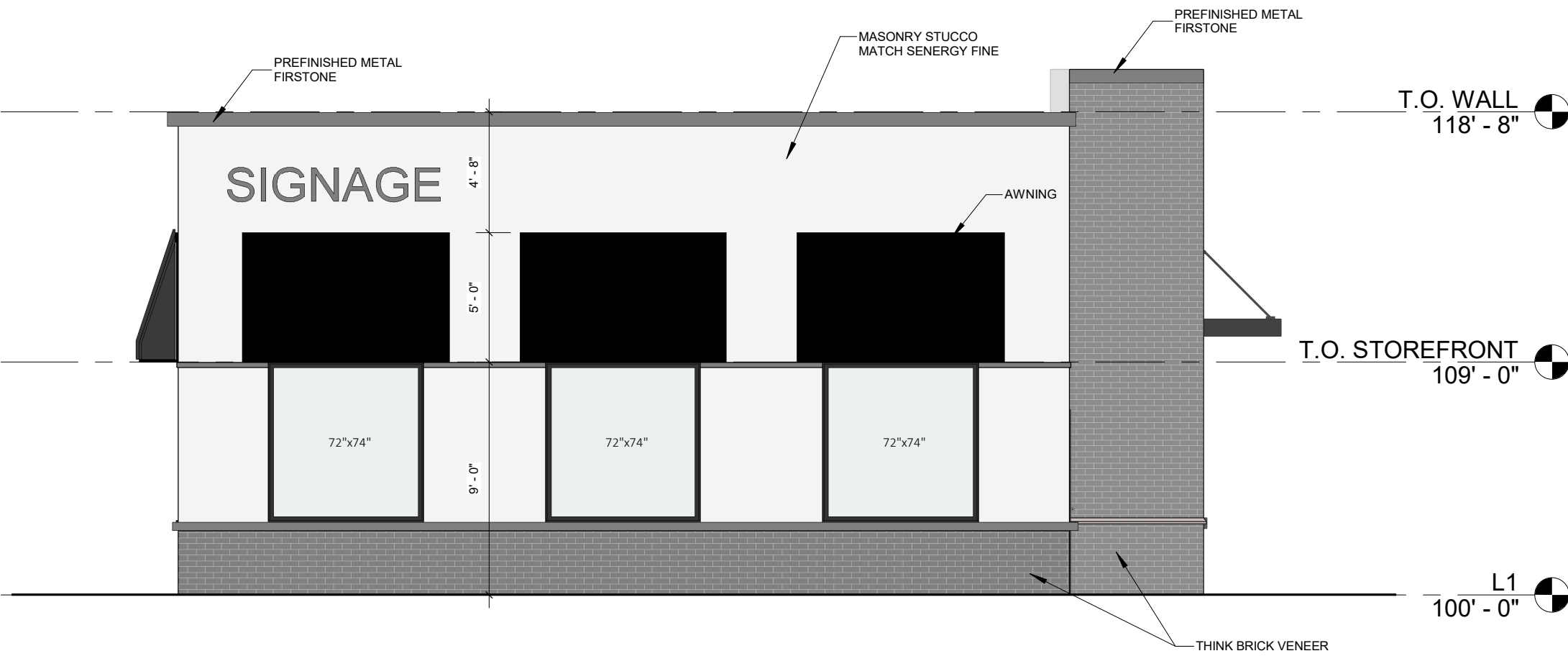
ARCHITECT	ARB
DRAWN BY	RWP
JOB NUMBER	2432

EXTERIOR ELEVATIONS - BLDG 1

SCALE: 3/16" = 1'-0"

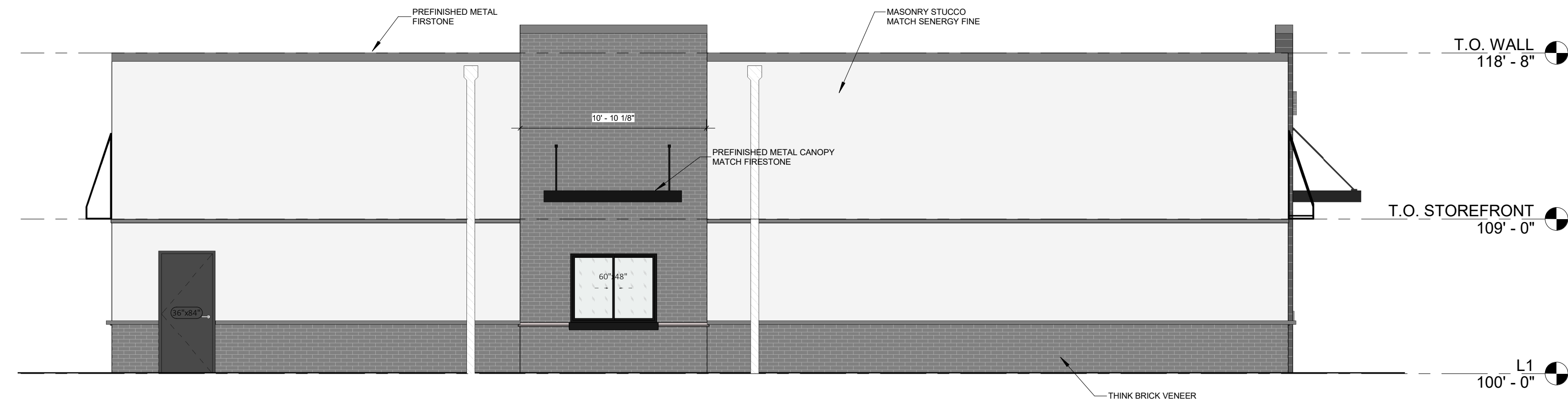
A2.01A

4/1/2025 2:27:03 PM

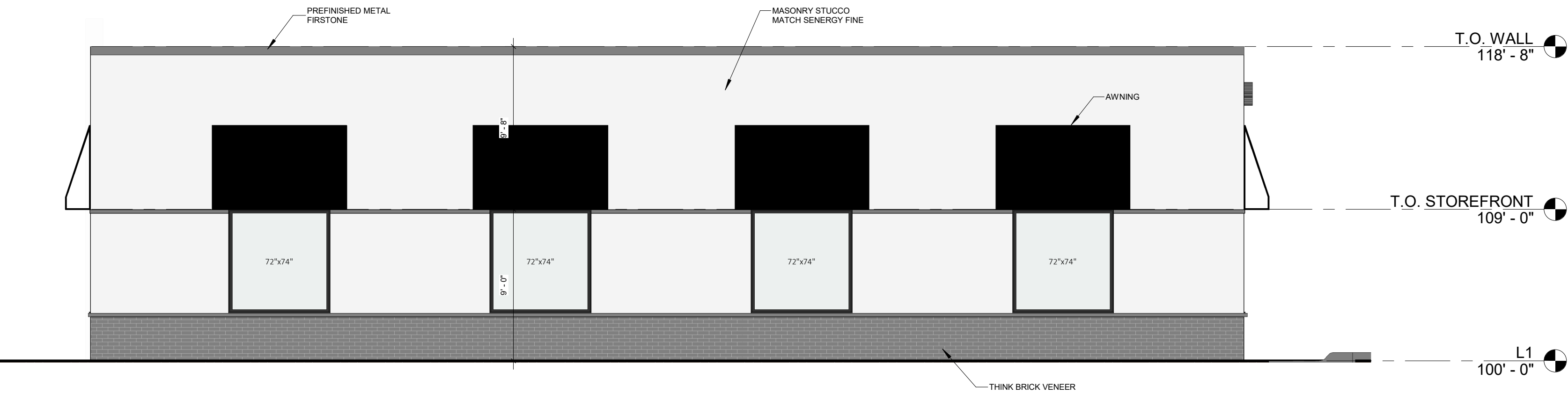


2 BLDG 2 - NORTH ELEVATION
3/16" = 1'-0"

3 BLDG 2 - SOUTH ELEVATION
3/16" = 1'-0"

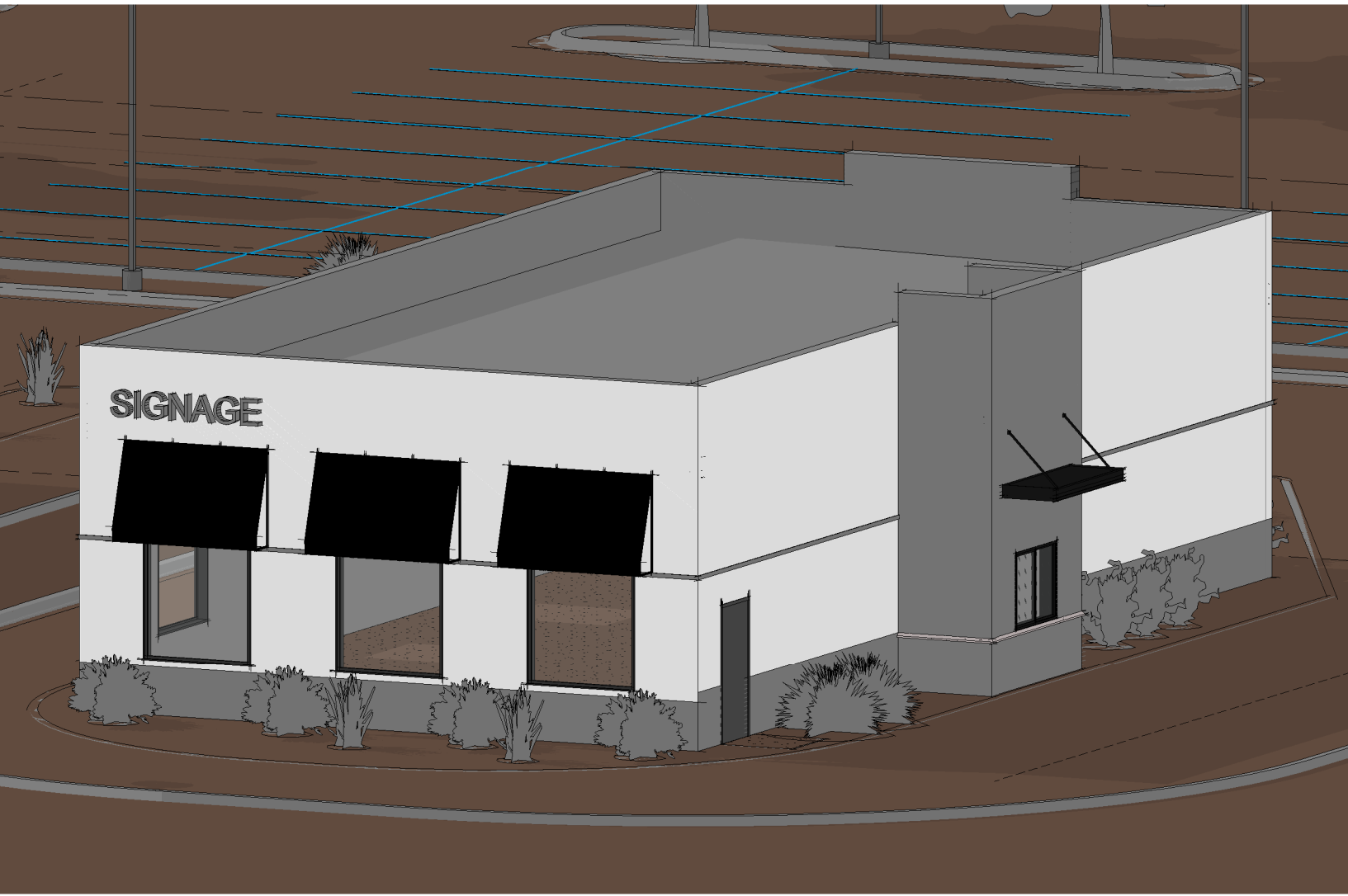


1 BLDG 2 - EAST ELEVATION
3/16" = 1'-0"



4 BLDG 2 - WEST ELEVATION
3/16" = 1'-0"

- VARIANCES REQUESTED:**
- SEC 94-165.7 (d): REQUESTING THE REQUIREMENT OF TOTAL AREA OF WINDOWS AND DOORS ON THE STREET-FACING FACADE, INCLUDING TRIM, BE REDUCED FROM 20% DOWN TO 15% TO ALLOW FOR BETTER PROPORTIONS OF GLASS TO THE BUIDLING FACADE.
 - TOTAL STREET-FACING AREA - 634.6 SF
 - GLASS AREA - 111 SF (17.5%)
 - AWNING AREA - 120 SF (16%)



DATE	04.01.25	
NO.	DESCRIPTION	DATE

JAVA PROPERTIES
BROOKINGS, SD

ALL DIMENSIONS & SIZE DESIGNATIONS ARE SUBJECT TO VERIFICATION ON THE JOBSITE AND ADJUSTMENTS TO FIT JOB CONDITIONS AS DEEMED NECESSARY.

ARCHITECT	ARB
DRAWN BY	RWP
JOB NUMBER	2432

EXTERIOR ELEVATIONS - BLDG 2

SCALE: 3/16" = 1'-0"

A2.01B