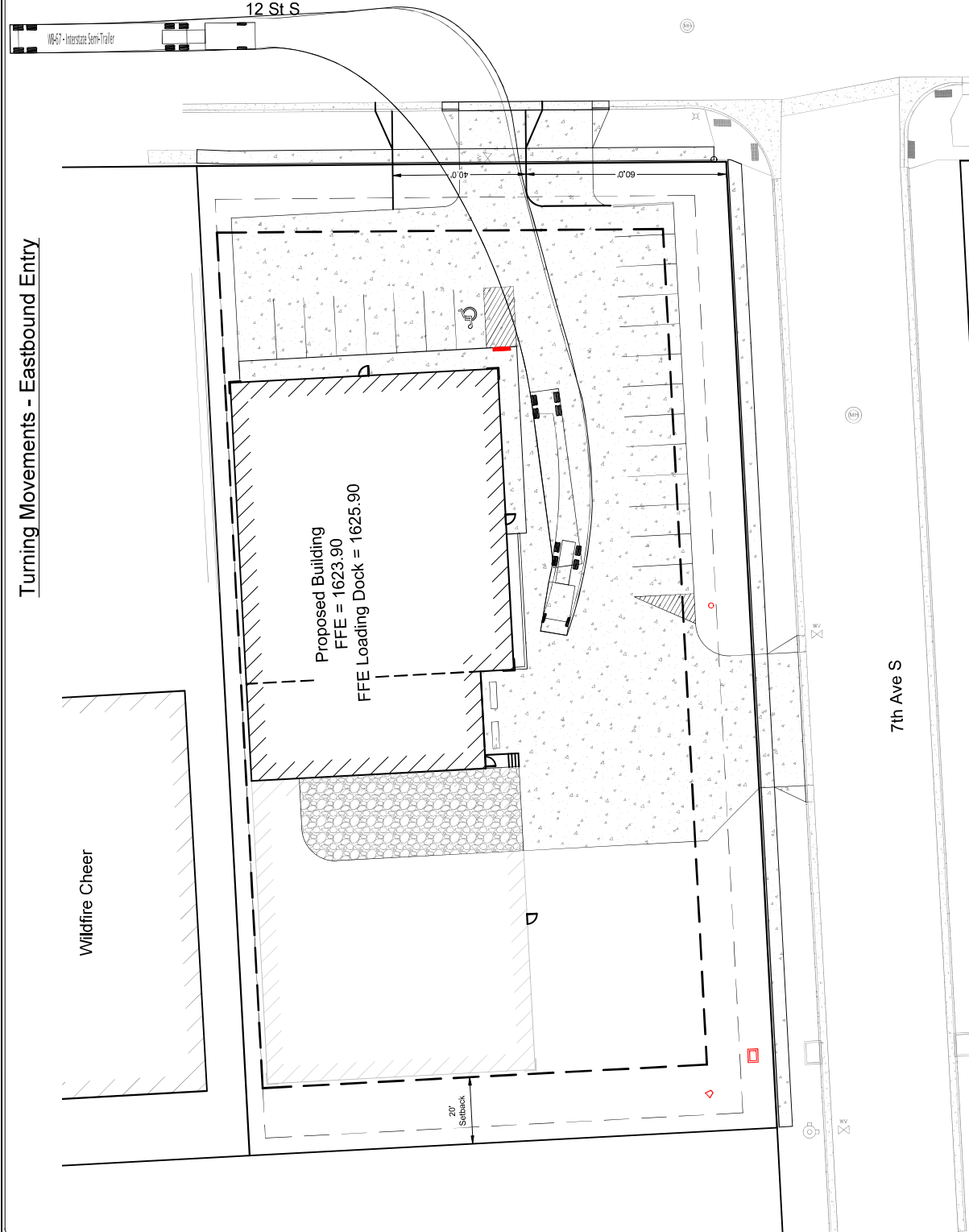


Turning Movements - Eastbound Entry



South Main Mini Storage

CAD Filename:
Preliminary Design

GDI Project No.
2022-109

Drawn By:
JLU

Checked By:
JDP

Scale:
1" = 30'

Date:
10/13/2022



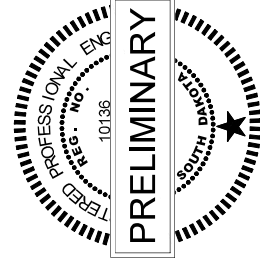
609 Main Ave S
Brookings, SD
605-696-3200

Sheet No. 2

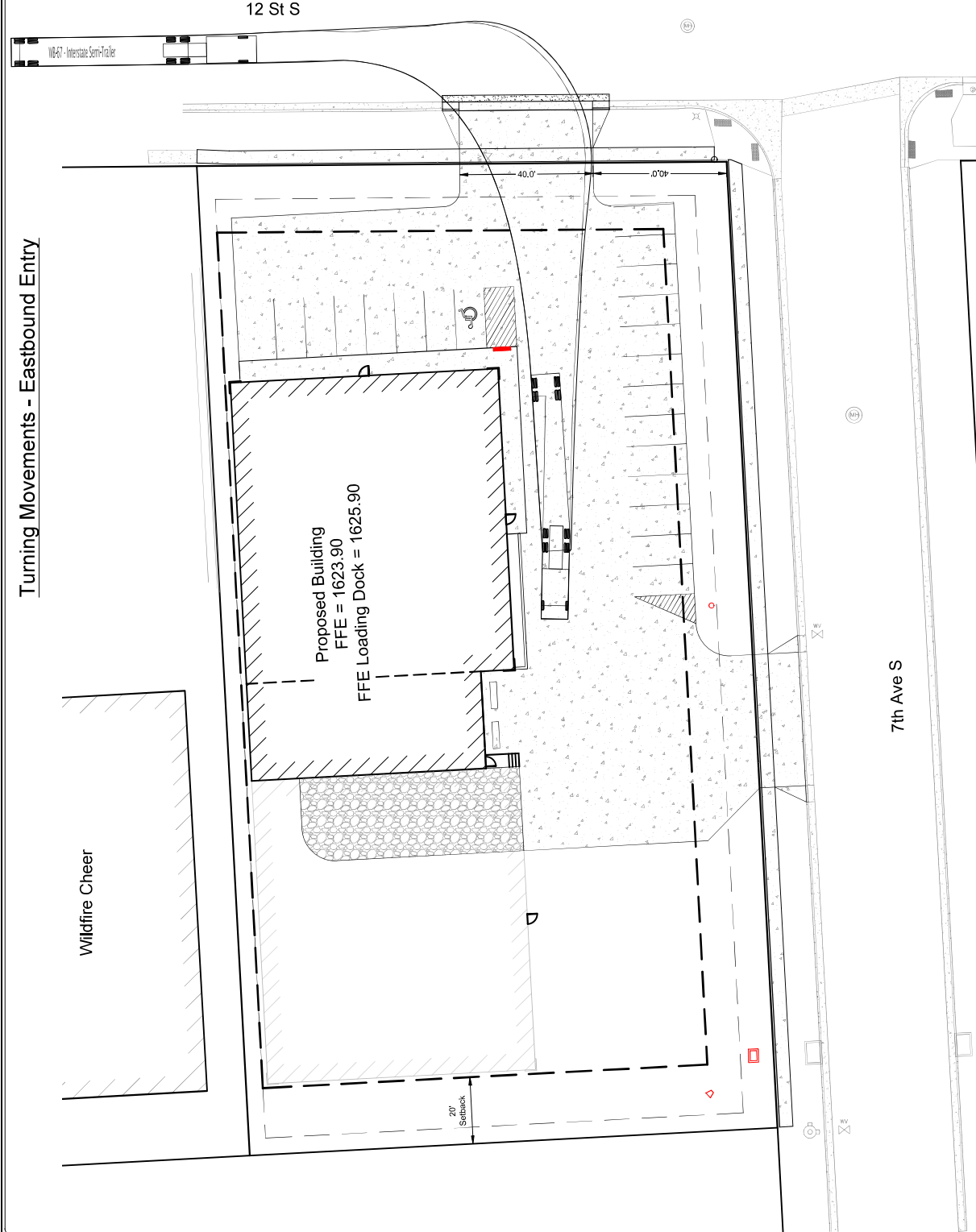
of No. 2



Scale: 1" = 30'
15 7.5 0 15 30



Turning Movements - Eastbound Entry



South Main Mini Storage

CAD Filename:
Preliminary Design

GDI Project No.
2022-109

Drawn By:
JLU

Checked By:
JDP

Scale:
1" = 30'

Date:
10/13/2022



609 Main Ave S
Brookings, SD
605-696-3200

Sheet No.: 2

of No.: 2

Turning Movements - Westbound Entry

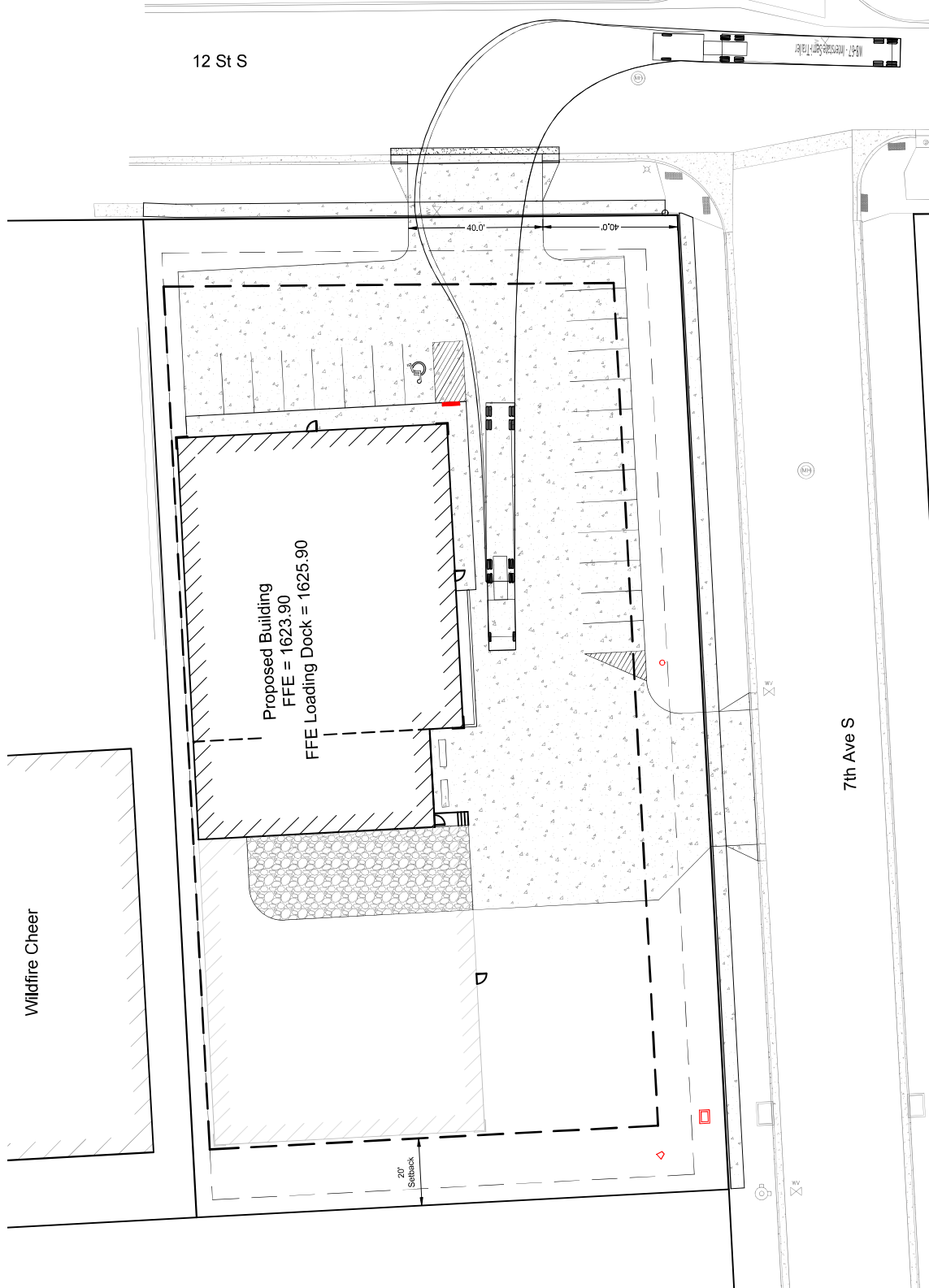


South Main Mini Storage		CAD Filename: Preliminary Design	GDI Project No. 2022-109	Drawn By: JLU	Checked By: JDP	Scale: 1" = 30'	Date: 10/13/2022	Sheet No. 1	of No. 2
-------------------------	--	-------------------------------------	-----------------------------	------------------	--------------------	--------------------	---------------------	----------------	-------------

609 Main Ave S
Brookings, SD
605-696-3200



Turning Movements - Westbound Entry



South Main Mini Storage		CAD Filename: Preliminary Design	GDI Project No. 2022-109	Drawn By: JLU	Checked By: JDP	Scale: 1" = 30'	Date: 10/13/2022	Sheet No. 1	of No. 2
-------------------------	--	-------------------------------------	-----------------------------	------------------	--------------------	--------------------	---------------------	----------------	-------------



609 Main Ave S
Brookings, SD
605-696-3200