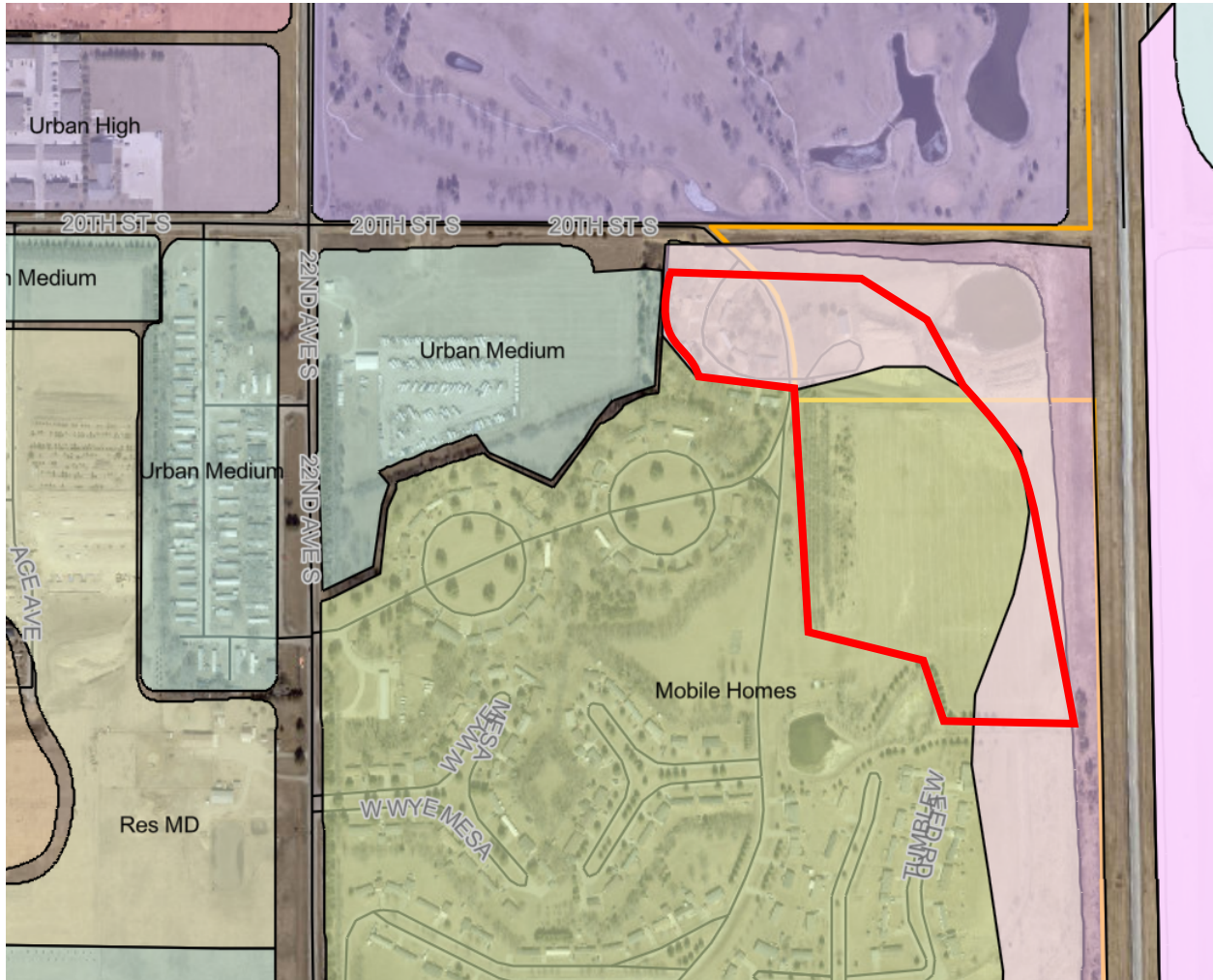


20th Street South / Interstate 29



Future Land Use	Zoning
Current: Open Space/Mobile Homes	Current: R-3A
Potential: Urban Low, Urban Medium, Urban High, High Density Residential	Potential: B-2, B-2A, B-3, B-4
Adjacent: <ul style="list-style-type: none"> • Parks (north) • Mobile Homes (south) • Urban Medium (east) • Urban Medium (west) 	Adjacent: <ul style="list-style-type: none"> • R-1A (north) • R-3A (south) • Ag (east) • B-3 (west)

Recommendation: Urban High Intensity

1622 20th Street South



Future Land Use	Zoning
Current: Medium Density Residential	Current: Agriculture
Potential: Urban Low, Urban Med, Medium Density Res, High Density Res	Potential: R-1B, R-1C, R-1D, R-2, R-3, B-2, B-2A
Adjacent: <ul style="list-style-type: none"> • Medium Density Res (north) • Medium Density Res (south) • Medium Density Res (east) • Urban Medium (west) 	Adjacent: <ul style="list-style-type: none"> • R-1B/R-2 (north) • R-1B/R-2 (south) • R-1B (east) • R-3/B-2 (west)

Recommendation: Urban Medium Intensity

20th Street South / 9th Avenue



Future Land Use	Zoning
Current: Open Space / Wetland	Current: B-2
Potential: Urban Low, Urban Med	Potential: B-2, B-3
Adjacent: <ul style="list-style-type: none"> • Open Space / Wetland (north) • High Density Res (south) • Open Space / Wetland (east) • High Density Res (west) 	Adjacent: <ul style="list-style-type: none"> • R-3A (north) • PDD / B-2 (south) • Ag (east) • R-3A (west)

Recommendation: Urban Medium Intensity

20th Street South / Tallgrass Parkway



Future Land Use	Zoning
Current: Urban Low Intensity	Current: PDD B-2A
Potential: Urban Low Intensity, Urban Medium Intensity	Potential: B-2A, B-2
Adjacent: <ul style="list-style-type: none"> • High Density Res (north) • High Density Res (south) • High Density Res (east) • Urban Medium (west) 	Adjacent: <ul style="list-style-type: none"> • R-3A (north) • R-3 (south) • B-2 (east) • B-2 (west)

Recommendation: Urban Medium Intensity

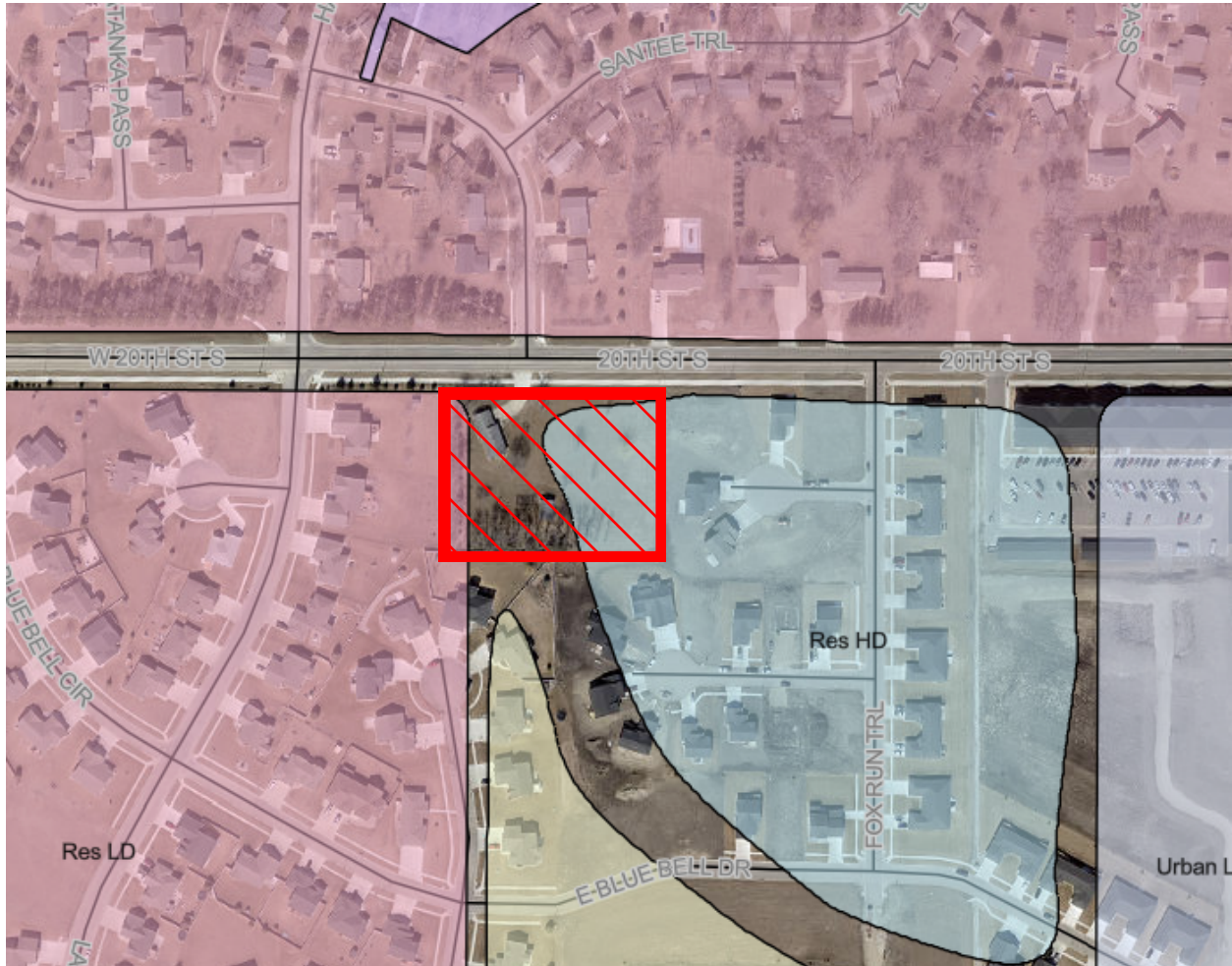
20th Street South / Main Avenue South



Future Land Use	Zoning
Current: Urban Low Intensity	Current: B-2
Potential: Urban Low, Urban Med	Potential: B-2, B-2A
Adjacent: <ul style="list-style-type: none"> • Medium Density Res (north) • Urban Medium (south) • Medium Density Res (east) • Low Density Res (west) 	Adjacent: <ul style="list-style-type: none"> • R-2 (north) • B-2 (south) • R-1B (east) • R-1B (west)

Recommendation: Urban Medium Intensity

103 W 20th Street South



Future Land Use	Zoning
Current: Residential	Current: Agriculture
Potential: Urban Low, Urban Med, Medium Density Res, High Density Res	Potential: R-1B, R-1C, R-1D, R-2, R-3, B-2, B-2A
Adjacent: <ul style="list-style-type: none"> • Low Density Res (north) • Medium Density Res (south) • High Density Res (east) • Low Density Res (west) 	Adjacent: <ul style="list-style-type: none"> • R-1B (north) • R-1D/R-2 (south) • R-1D (east) • R-2 (west)

~~Recommendation: Urban Low Intensity~~
 DRT / Planning Commission Recommends No Change

20th Street South / Western Ave



Future Land Use	Zoning
Current: Low Density Residential	Current: Agriculture / R-3
Potential: Low Density Residential, Urban Low Intensity	Potential: R-1B, R-1C, R-1D, R-2, R-3, B-2, B-2A
Adjacent: <ul style="list-style-type: none"> • Low Density Res (north) • Low Density Res (south) • Low Density Res (east) • Low Density Res (west) 	Adjacent: <ul style="list-style-type: none"> • R-1B (north) • R-3 (south) • R-2 (east) • R-1B (west)

~~Recommendation: Urban Low Intensity~~

DRT / Planning Commission Recommends No Change