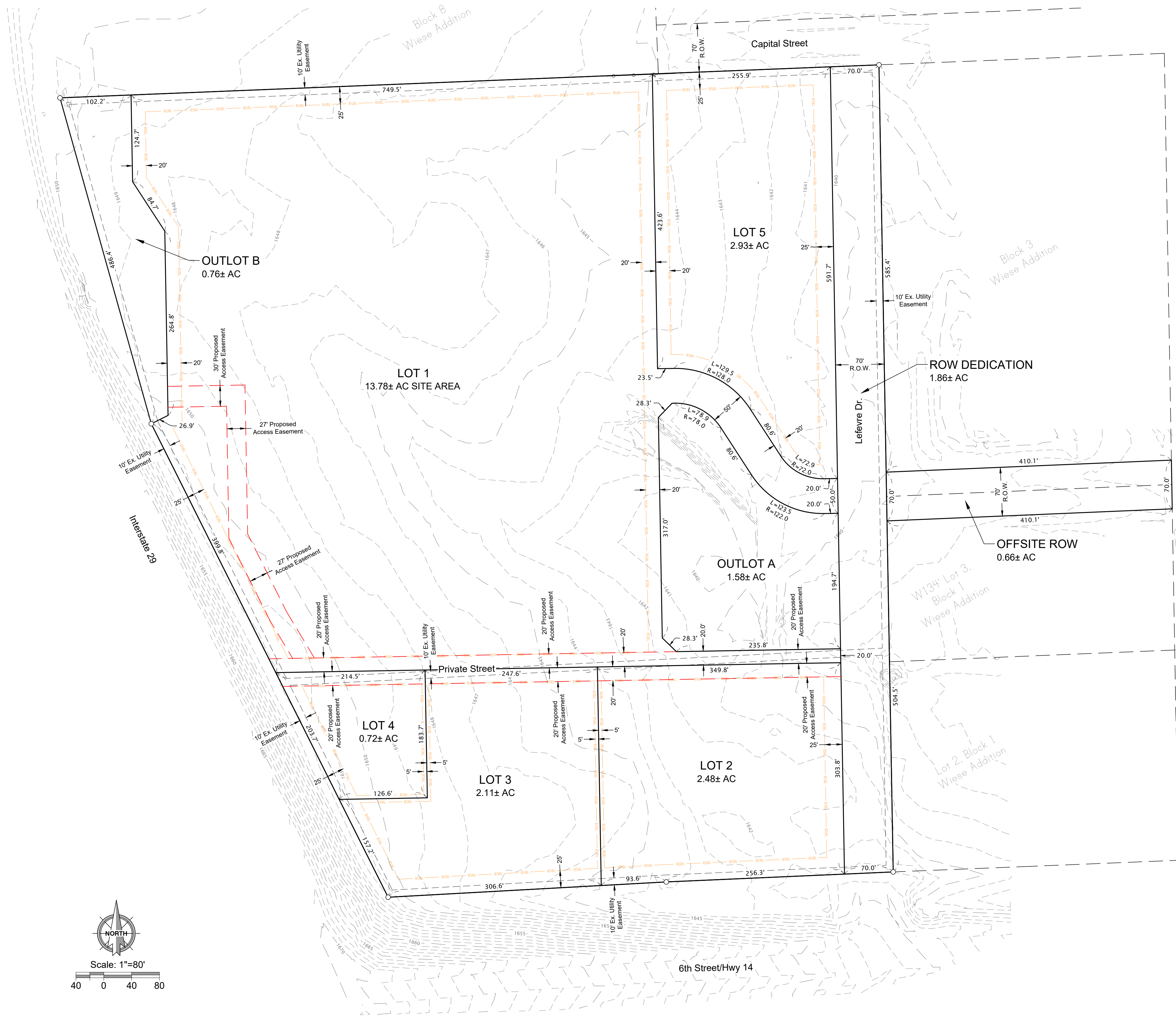


P:\Brookings Projects\2022-276 Ryan A-E - Brookings Marketplace\Design\Preliminary Design\2022-276 Ryan Comp - Preliminary Design Revised 4-14-2023.dwg, Preliminary Plat, 4/24/2023 2:24 PM, Jesse Ulvestad



- Legend**
- Existing Contour Line
 - Proposed Property Line
 - Building Setback Line
 - - - Proposed Access Easement

LEGAL DESCRIPTION

Block 9 of Wiese Addition in the SW 1/4 of the SE 1/4 of Section 19-T110N-R49W to the City of Brookings, Brookings County, South Dakota.

Developer: Ryan Companies US Inc
 Patrick Daly
 533 South Third Street, Suite 100
 Minneapolis, MN 55415
 (612) 492-4000

Surveyor: Civil Design Inc
 Andrew Kangas
 609 Main Avenue South
 Brookings, SD 57006
 (605) 696-3200

