

Figure 1.1: Grass areas to be mowed and maintained at the Brookings City & County Government Center.

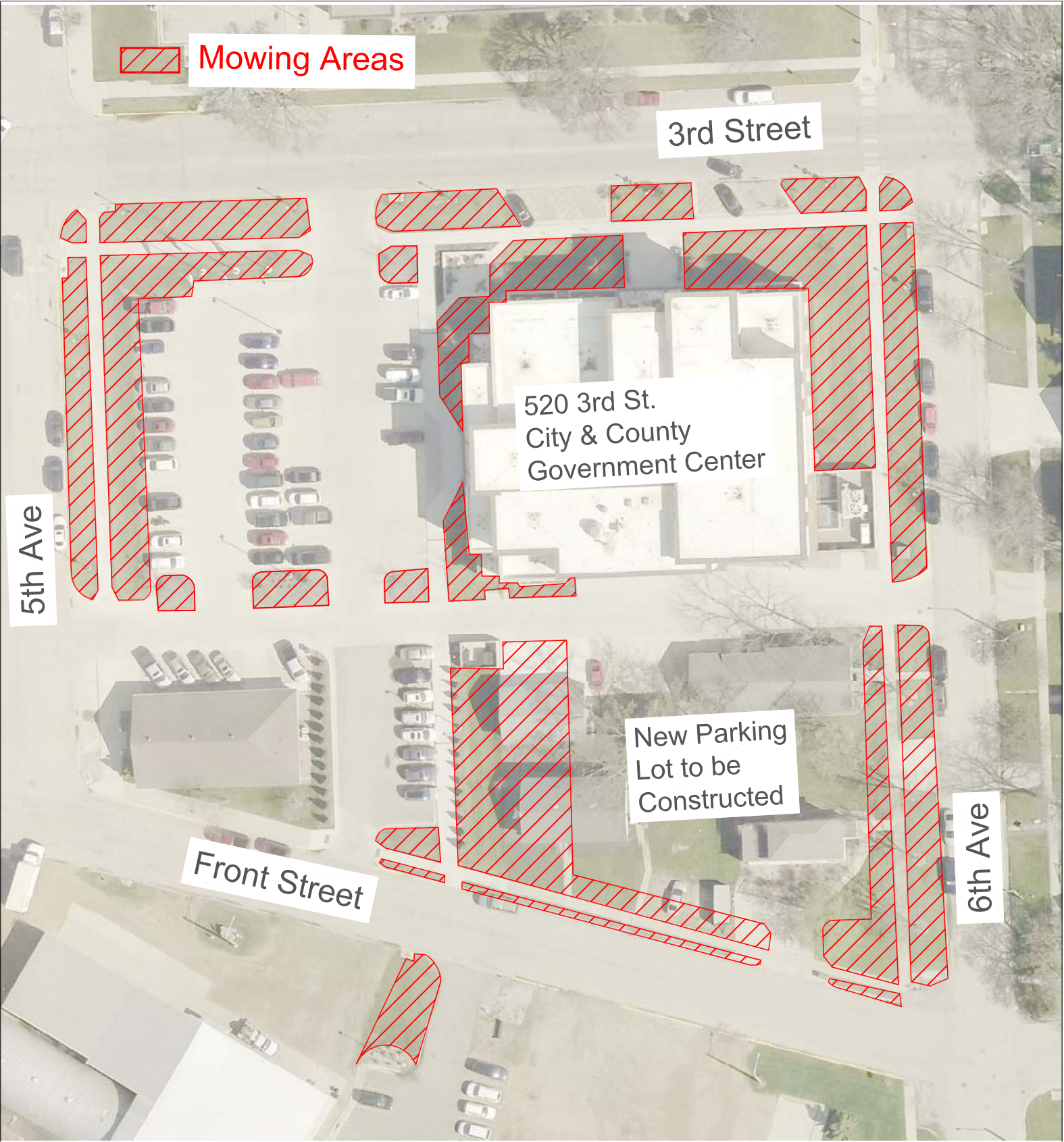




Figure 1.2: Grass areas to be mowed and maintained at the Brookings County Courthouse.

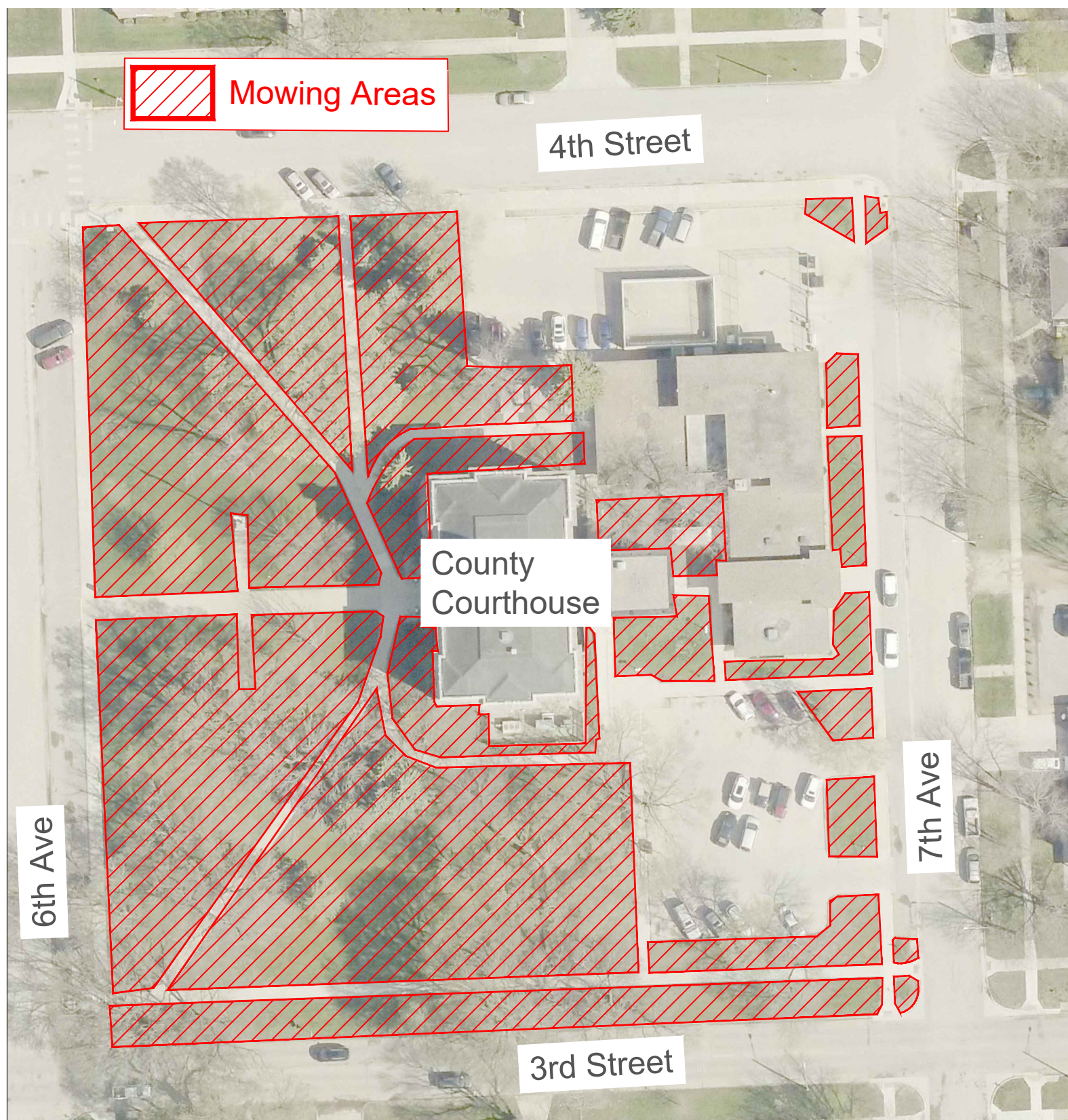


Figure 1.3: Grass areas to be mowed and maintained at the 1921 Building.

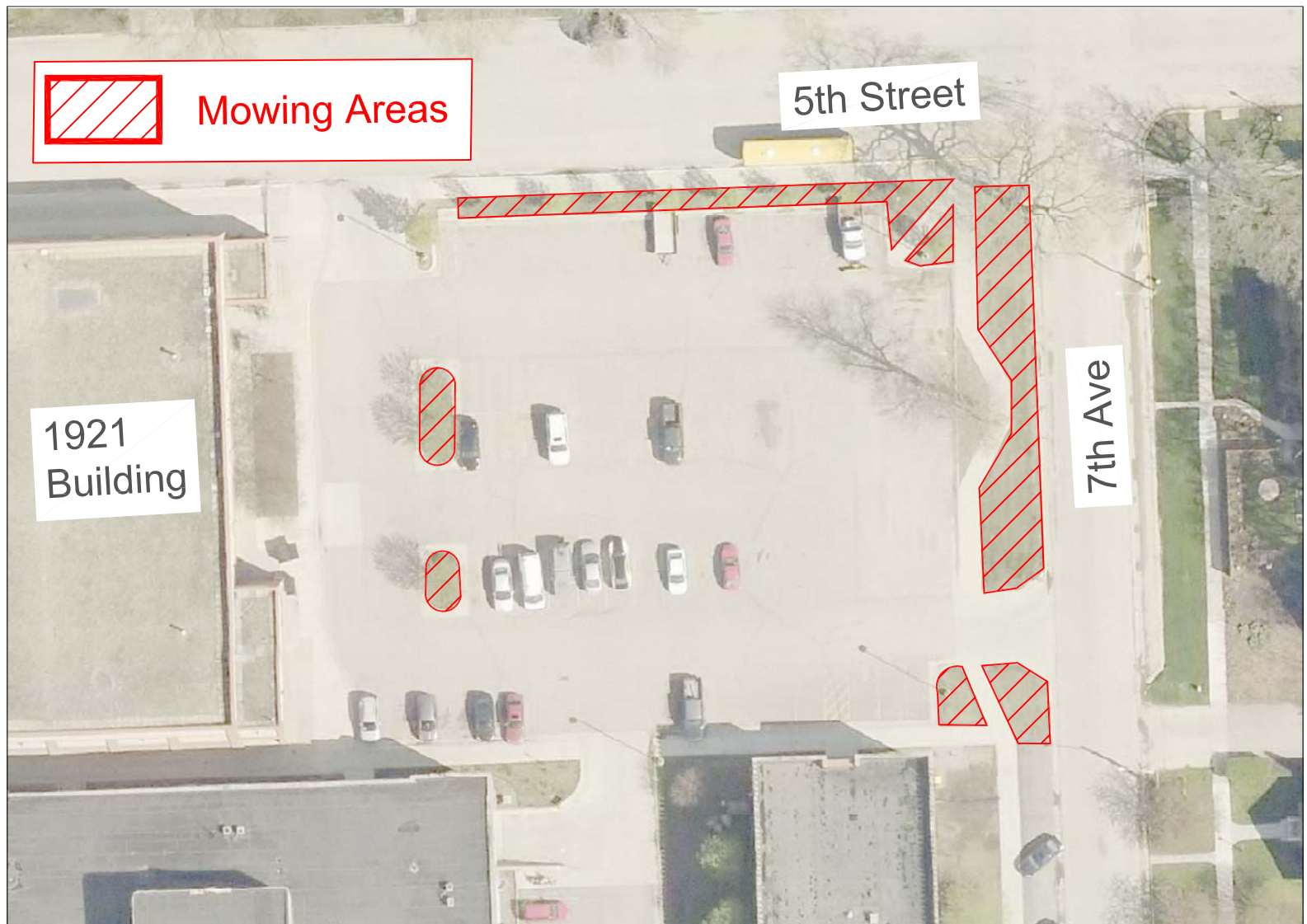




Figure 2.1: Areas requiring snow removal at the Brookings City and County Government Center.

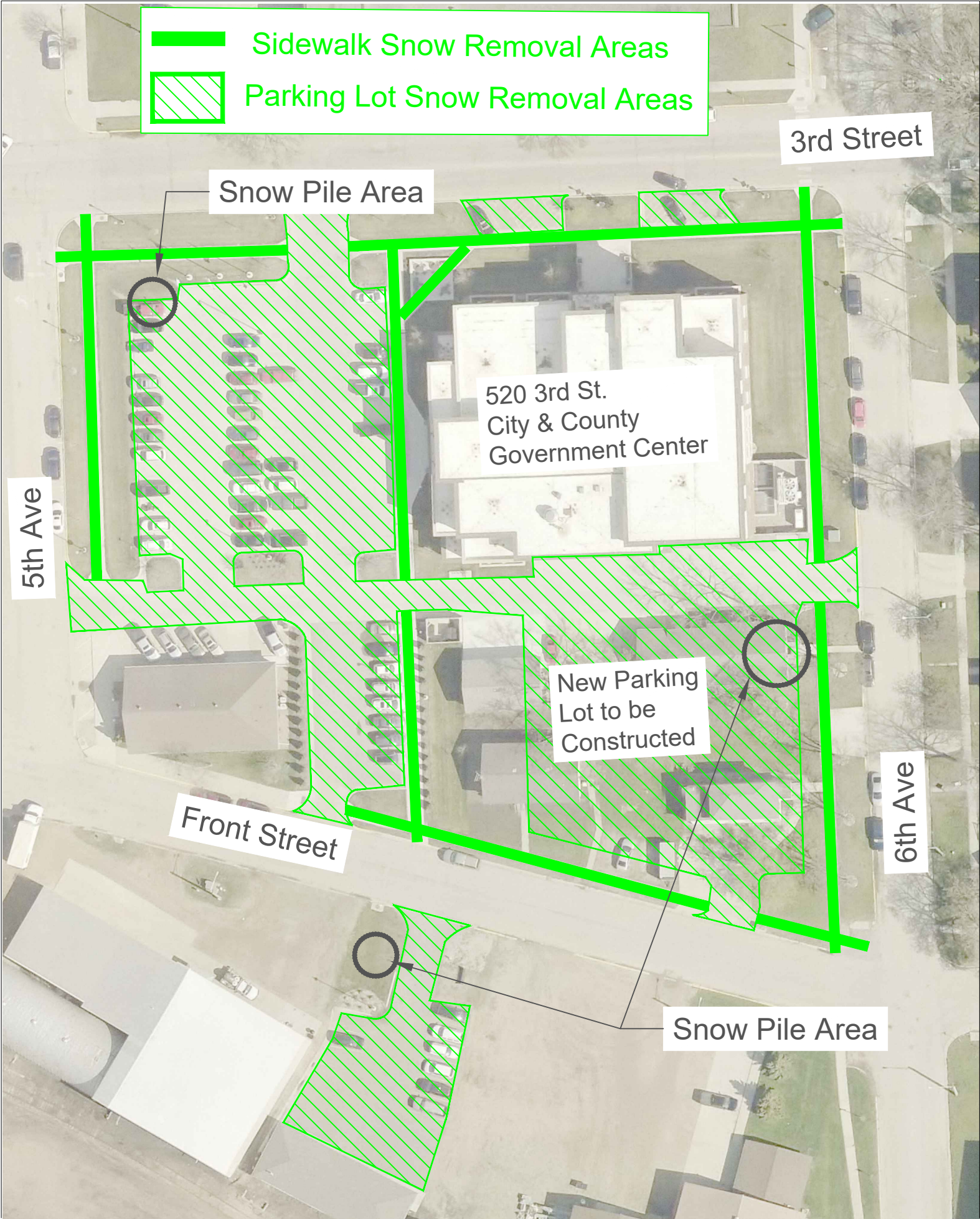




Figure 2.2: Areas requiring snow removal at the Brookings County Courthouse.

Sidewalk Snow Removal Areas

Parking Lot Snow Removal Areas

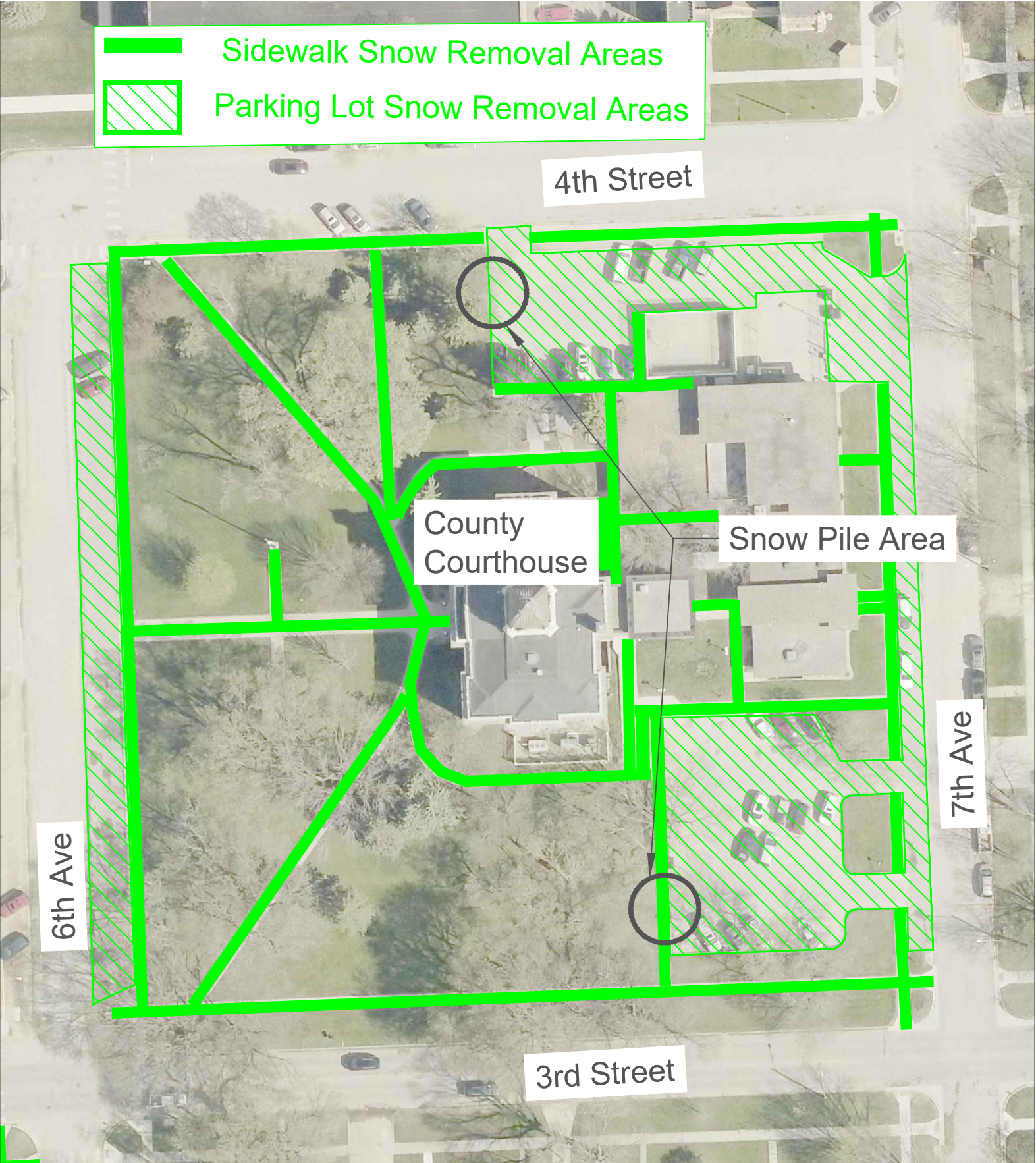


Figure 2.3: Areas requiring snow removal at the 1921 Building.

