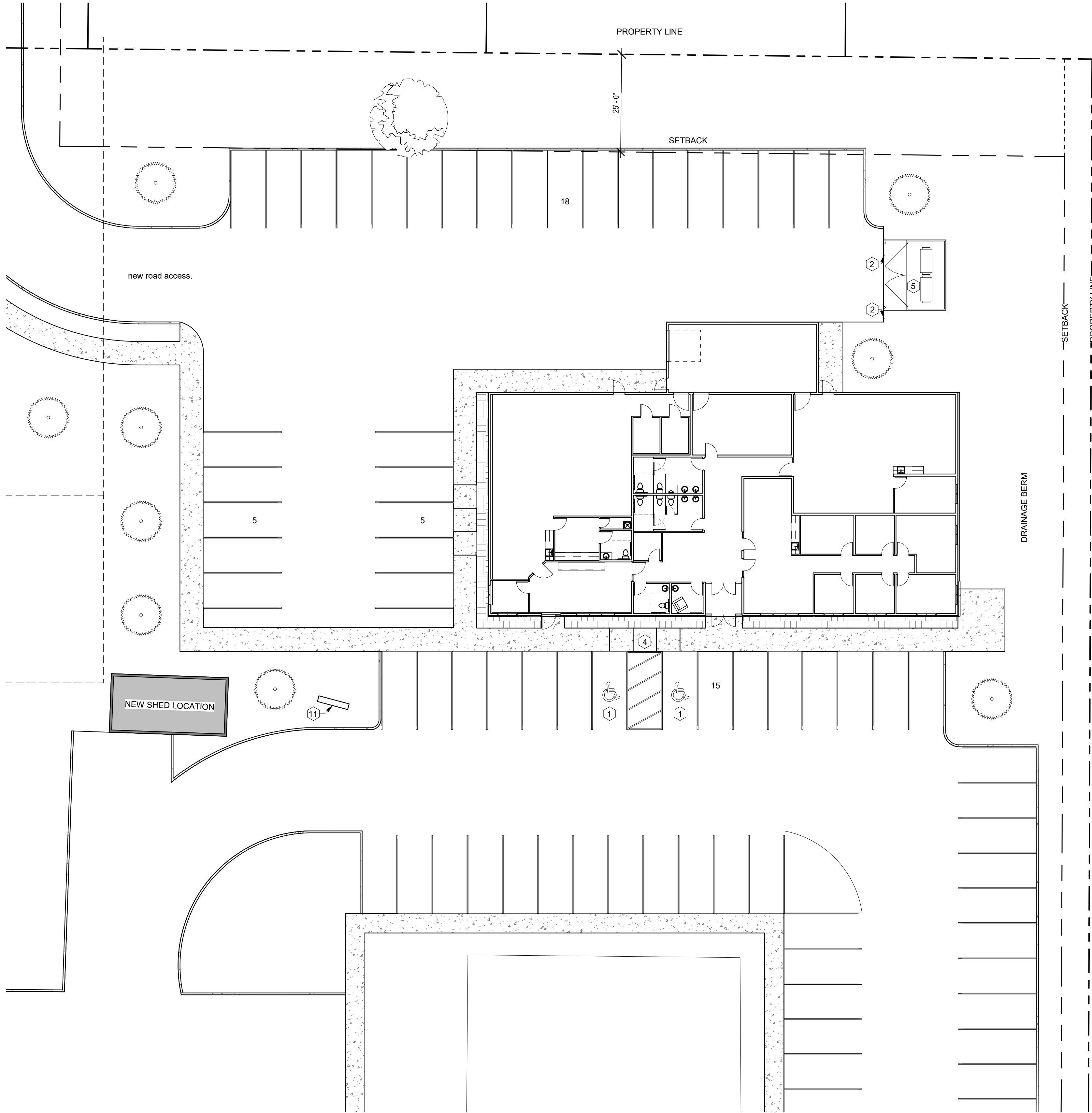


1 ARCHITECTURAL SITE PLAN
1/16" = 1'-0"



GENERAL NOTES - ARCH. SITE PLAN

- A. IMPORTANT: ARCHITECTURAL SITE PLAN SHOWN FOR REFERENCE AND DESIGN INTENT ONLY, AND NOT TO BE USED FOR CONSTRUCTION. REFER TO CIVIL FOR ALL DIMENSIONING, SLOPING & GRADING, SPOT ELEVATIONS & ADDITIONAL REQUIREMENTS.
- B. CONTRACTOR TO VERIFY ALL EXISTING SITE CONDITIONS PRIOR TO SITE PREP. REPORT ANY DISCREPANCIES TO ARCHITECT AND CIVIL ENGINEER IMMEDIATELY.
- C. CONTRACTOR TO VERIFY ANY CRITICAL DIMENSIONS WITH REGARDS TO EXISTING CONSTRUCTION, IF ANY.

KEYNOTES - ARCH. SITE PLAN

1. DESIGNATED ADA PARKING STALL LOCATION, SEE CIVIL FOR STRIPING AND SIGNAGE REQUIREMENTS.
2. BOLLARD, SEE TYPICAL PLAN, TAIL TYPED SHEET.
3. SITE LIGHTING (SEE ELECTRICAL TYPED SHEET).
4. ACCESSIBLE CURB CUT, SEE ADA REQUIREMENTS.
5. DUMPSTER ENCL. SEE ELECTRICAL TYPED SHEET FOR SCREENING FENCE.
6. GAS METER (SEE ELECTRICAL TYPED SHEET).
7. ELEC. METER (SEE ELECTRICAL TYPED SHEET).
8. WATER METER (SEE ELECTRICAL TYPED SHEET).
9. DESIGNATED TRANSFORMER LOCATION (SEE ELEC.).
10. DESIGNATED 14'x35' LOADING AREA.
11. SITE SIGNAGE BY OTHERS, SHOWN ON PLAN FOR GENERAL PLACEMENT ONLY.

PRELIMINARY PLANS - NOT
FOR CONSTRUCTION



Architecture | Planning | Interiors

830 2nd Street South
Brookings, SD 57006 | P: 605.692.4008

315 N. Main Ave. Ste. 301
Sioux Falls, SD 57104 | P: 605.692.4008

STAMP:

PRELIMINARY
PLANS

NOT FOR
CONSTRUCTION

REVISIONS:
NO. | DESCRIPTION:

DATE:

SHEET NAME:
ARCHITECTURAL SITE
PLAN

PROJECT NO.
DA20_024

NON-PROFIT
BUILDING

BROOKINGS, SD

PROJECT MANAGER:
THOMAS SQUIRES

DATE:
05.20.2021

SHEET:

AC1.1

FULL-SCALE: 24x36
HALF-SCALE: 12x18
DRAWING MAY NOT BE PRINTED TO SCALE