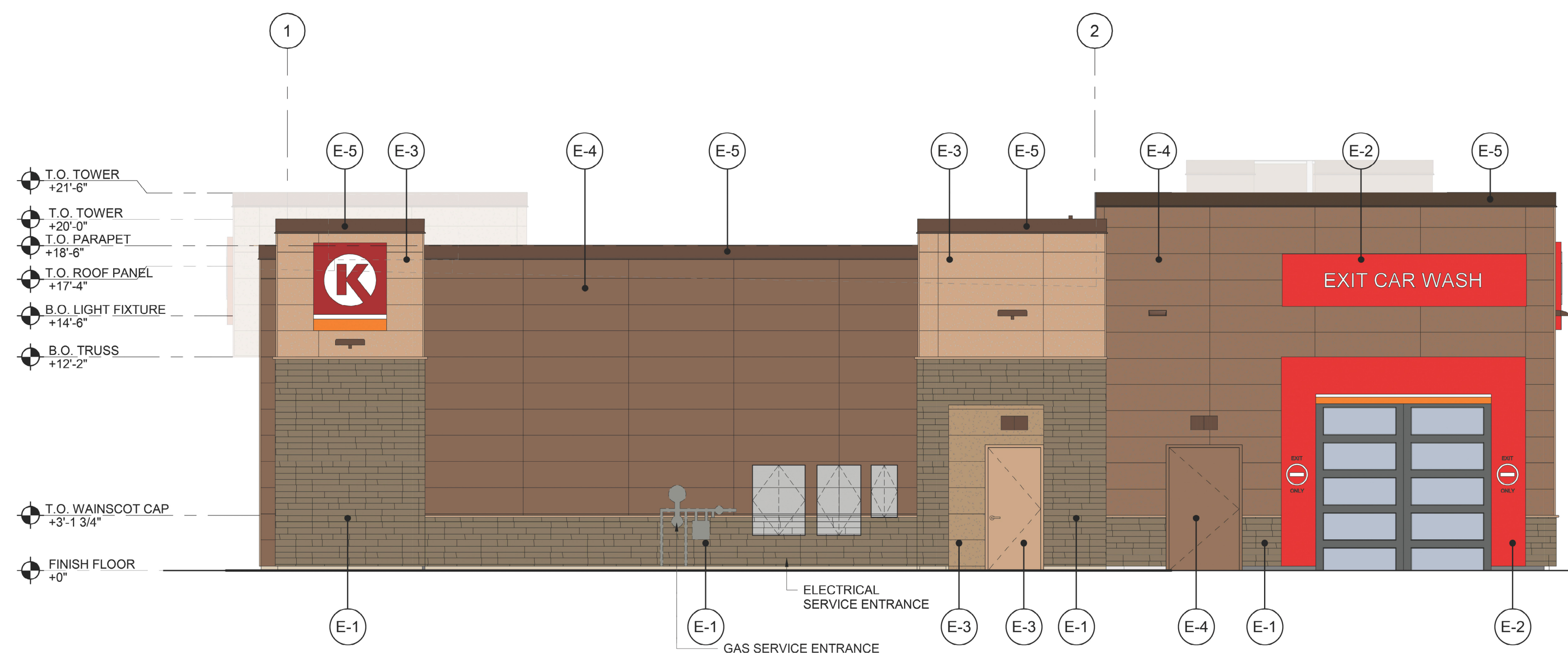


- E-11. PRE-MANUFACTURED COOLER/FREEZER
- E-10. FROSTED GLASS
- E-9. SPANDREL GLASS
- E-8. ALUMINIUM AWNING
(SHERMAN VILLIAMS 605 "SAFEVIEW")
- E-7. ANODIZED WINDOW FRAME
COLOR: DWR/BRNCKE
- E-6. 1" INSULATED CLEAR GLASS
- E-5. METAL COPING/ LADDER/ GUTTER & DOWNSPOUT
(SHERMAN VILLIAMS 605 "JACK")
- E-4. NICHHA TUFF BLOCK
(SHERMAN VILLIAMS 605 "TUSKEY")
- E-3. NICHHA TUFF BLOCK
(SHERMAN VILLIAMS 10 "TUSKLY TRIP")
- E-2. NICHHA TUFF BLOCK
(SHERMAN VILLIAMS 401 "SAFEVIEW")
- E-1. NICHHA "LEDGESTONE BLUFF"

MATERIAL LEGEND
3/16" = 1'-0"

ISSUE	DATE



SIDE ELEVATION (WEST) | 1
3/16" = 1'-0"



SIDE ELEVATION (EAST) | 2
3/16" = 1'-0"

E-11. PRE-MANUFACTURED COOLER/FREEZER

E-10 FROSTED GLASS

E-9. SPANDREL GLASS

E-8. ALUMINIUM AWNING
SHERMAN WILLIAMS 8001 "SAFETY RED"

E-7. ANODIZED WINDOW FRAME
COLOR DARK BRONZE

E-6. 1" INSULATED CLEAR GLASS

E-5. METAL COPING/ LADDER/ GUTTER & DOWNSPOUT
SHERMAN WILLIAMS 8000 "JAGGY"

E-4. NICHHA TUFF BLOCK
SHERMAN WILLIAMS 8005 "TURKEY"

E-3. NICHHA TUFF BLOCK
SHERMAN WILLIAMS 8115 "TODDLY TRIP"

E-2. NICHHA TUFF BLOCK
SHERMAN WILLIAMS 8001 "SAFETY RED"

E-1. NICHHA "LEDGESTONE BLUFF"

MATERIAL LEGEND |
3/16" = 1'-0"