



# City of Brookings, SD 32nd Ave

## 32nd Ave Notes:

1. Pavement width = 36 ft.
2. Overall Length = 2650 In.ft.
3. North is a dead-end. Maintain one lane of traffic throughout construction.

## 32nd Avenue Qty:

Type 3 Slurry Seal:	10,700 sq.yd.
Remove Pavement Marking 4":	850 In.ft.
Remove Pavement Marking Area:	40 sq.ft.
Epoxy Pavement Marking, 4Y:	850 In.ft.
Epoxy Pavement Marking, 24W:	20 In.ft.
Type 3 Barricade, 8' dbl sided:	3 ea.
Road Closed (48"x30"):	30 sq.ft.

32nd Avenue

I-29



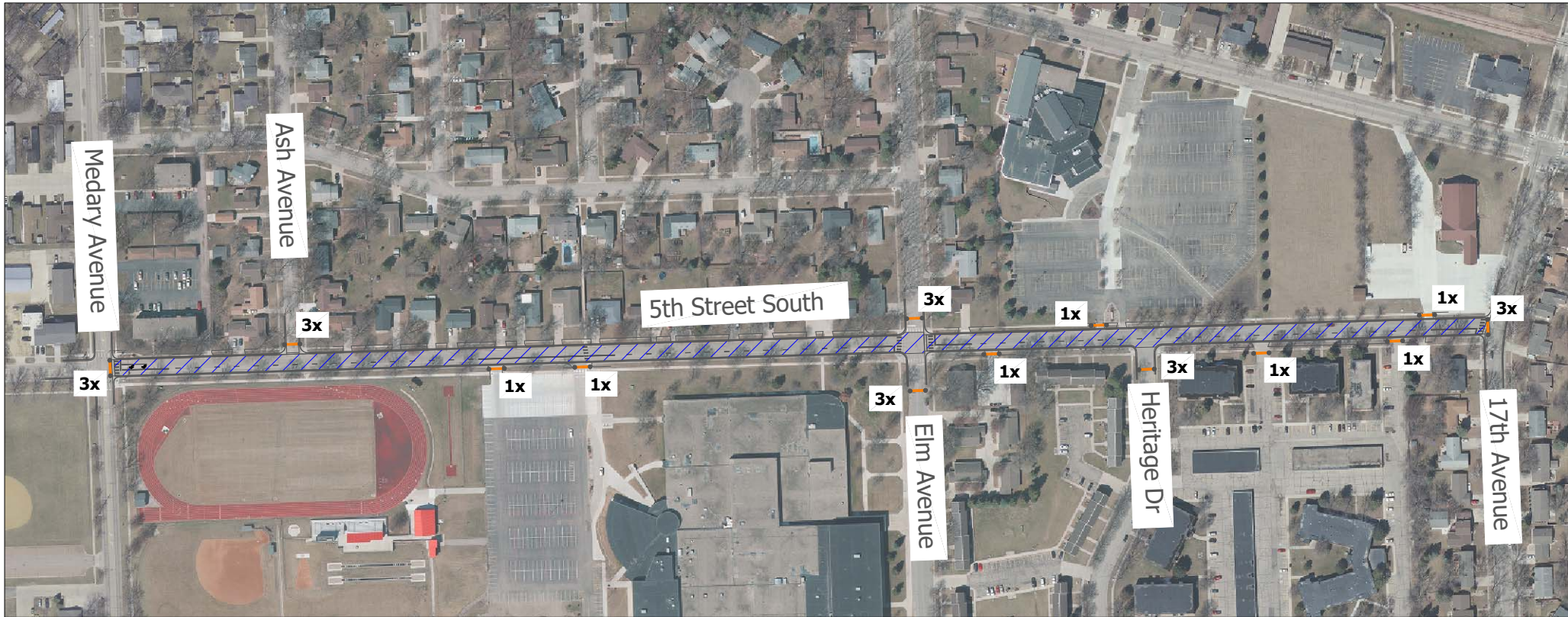
0 300 600 Feet

3x

Hwy 14 Bypass

# City of Brookings, SD

## 5th Street South

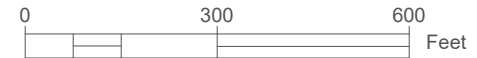


### 5th Street South Qty:

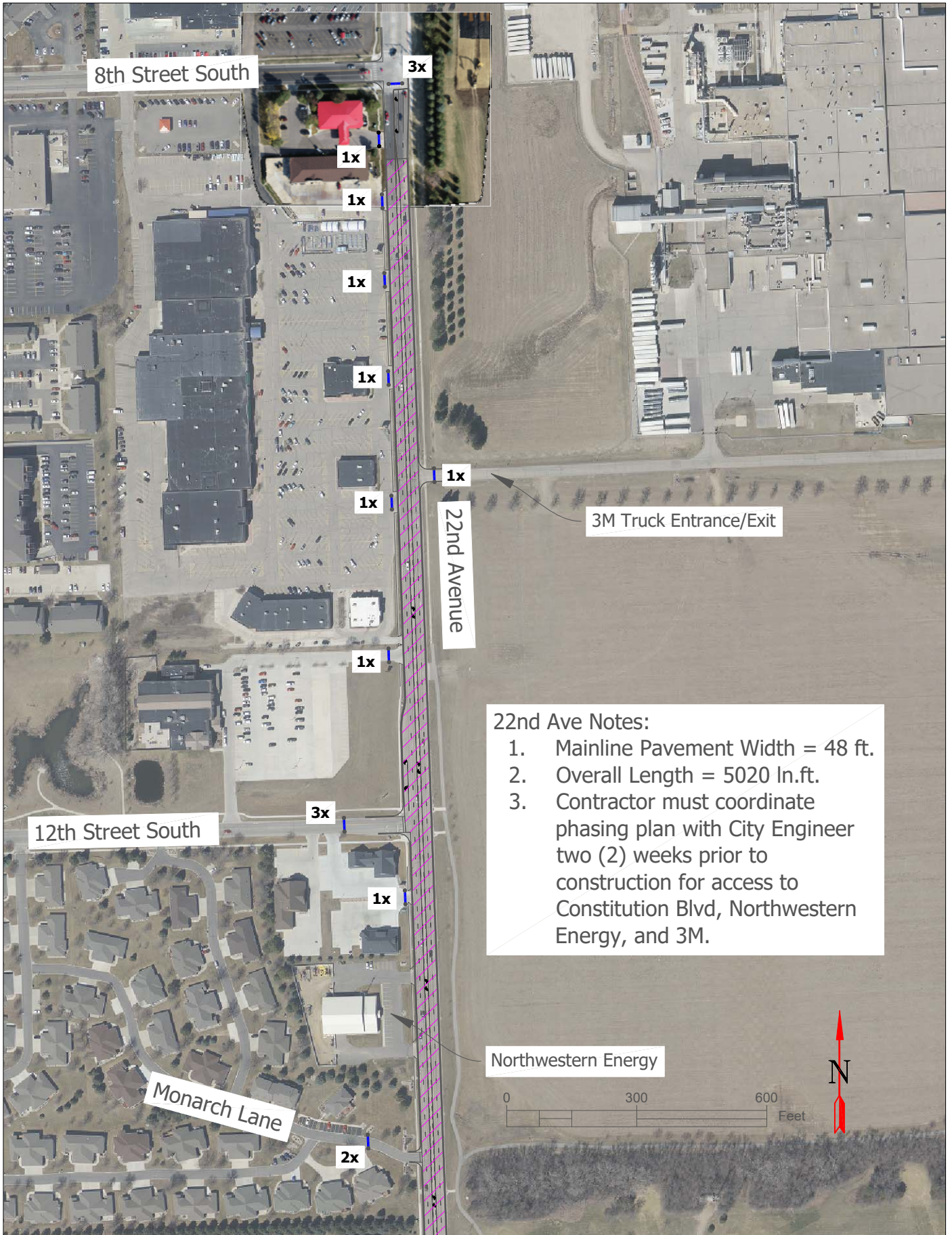
Type 3 Slurry Seal:	10,400 sq.yd.
Remove Pavement Marking 4":	1570 ln.ft.
Remove Pavement Marking Arrow:	2 ea.
Remove Pavement Marking Area:	600 sq.ft.
Epoxy Pavement Marking, 4W:	50 ln.ft.
Epoxy Pavement Marking, 4Y:	1520 ln.ft.
Epoxy Pavement Marking, 24W:	300 ln.ft.
Epoxy Pavement Marking, arrow:	2 ea.
Type 3 Barricade, 8' dbl sided:	25 ea.
Road Closed (48"x30"):	140 sq.ft.

### 5th Street South Notes:

1. Pavement width = 32 ft.
2. Overall Length = 2820 ln.ft.



# City of Brookings, SD 22nd Ave - 1

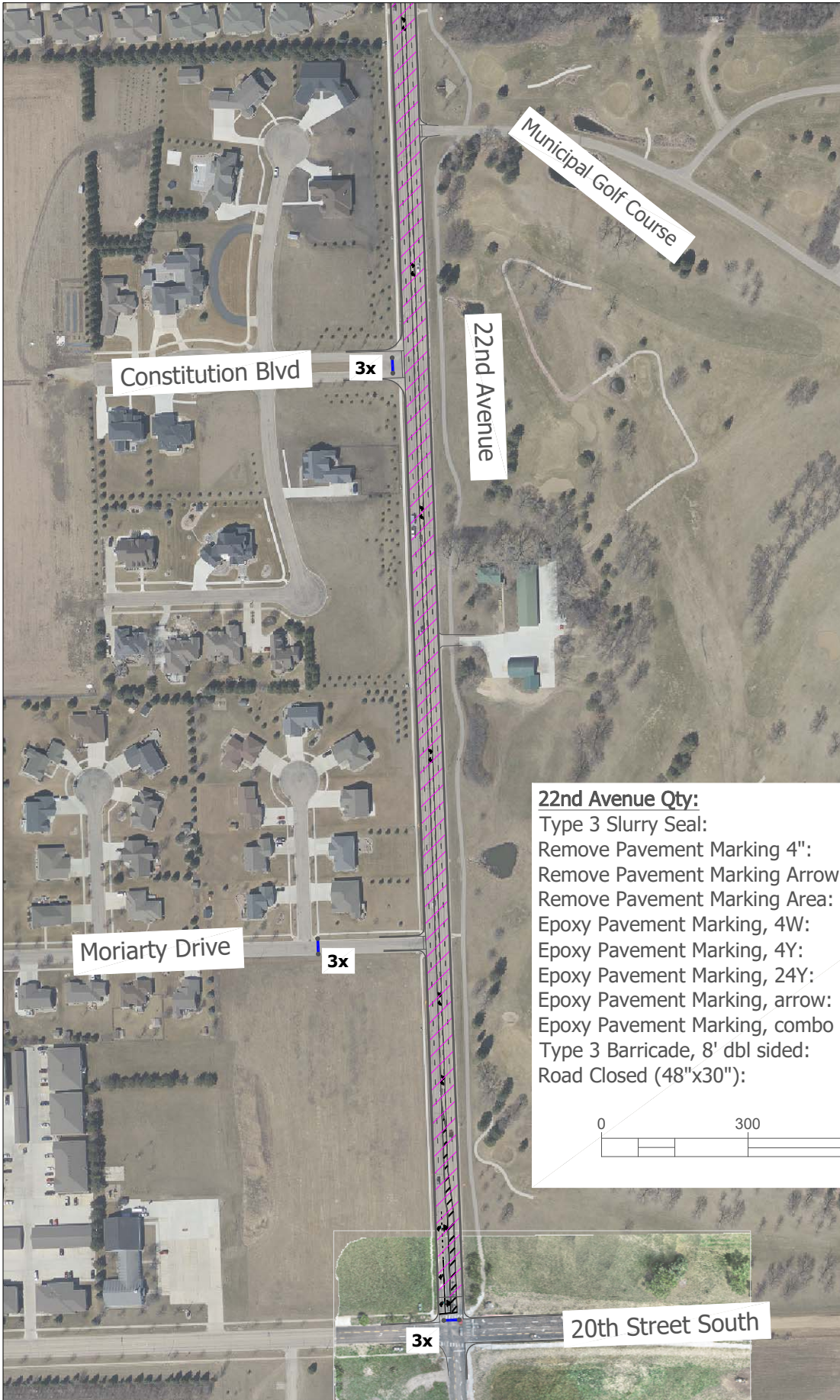


**22nd Ave Notes:**

1. Mainline Pavement Width = 48 ft.
2. Overall Length = 5020 In.ft.
3. Contractor must coordinate phasing plan with City Engineer two (2) weeks prior to construction for access to Constitution Blvd, Northwestern Energy, and 3M.

# City of Brookings, SD

## 22nd Ave - 2



**22nd Avenue Qty:**

Type 3 Slurry Seal:	27,180 sq.yd.
Remove Pavement Marking 4":	15,895 ln.ft.
Remove Pavement Marking Arrow:	24 ea.
Remove Pavement Marking Area:	800 sq.ft.
Epoxy Pavement Marking, 4W:	2670 ln.ft.
Epoxy Pavement Marking, 4Y:	13,225 ln.ft.
Epoxy Pavement Marking, 24Y:	400 ln.ft.
Epoxy Pavement Marking, arrow:	22 ea.
Epoxy Pavement Marking, combo arrow:	2 ea.
Type 3 Barricade, 8' dbl sided:	25 ea.
Road Closed (48"x30"):	140 sq.ft.

