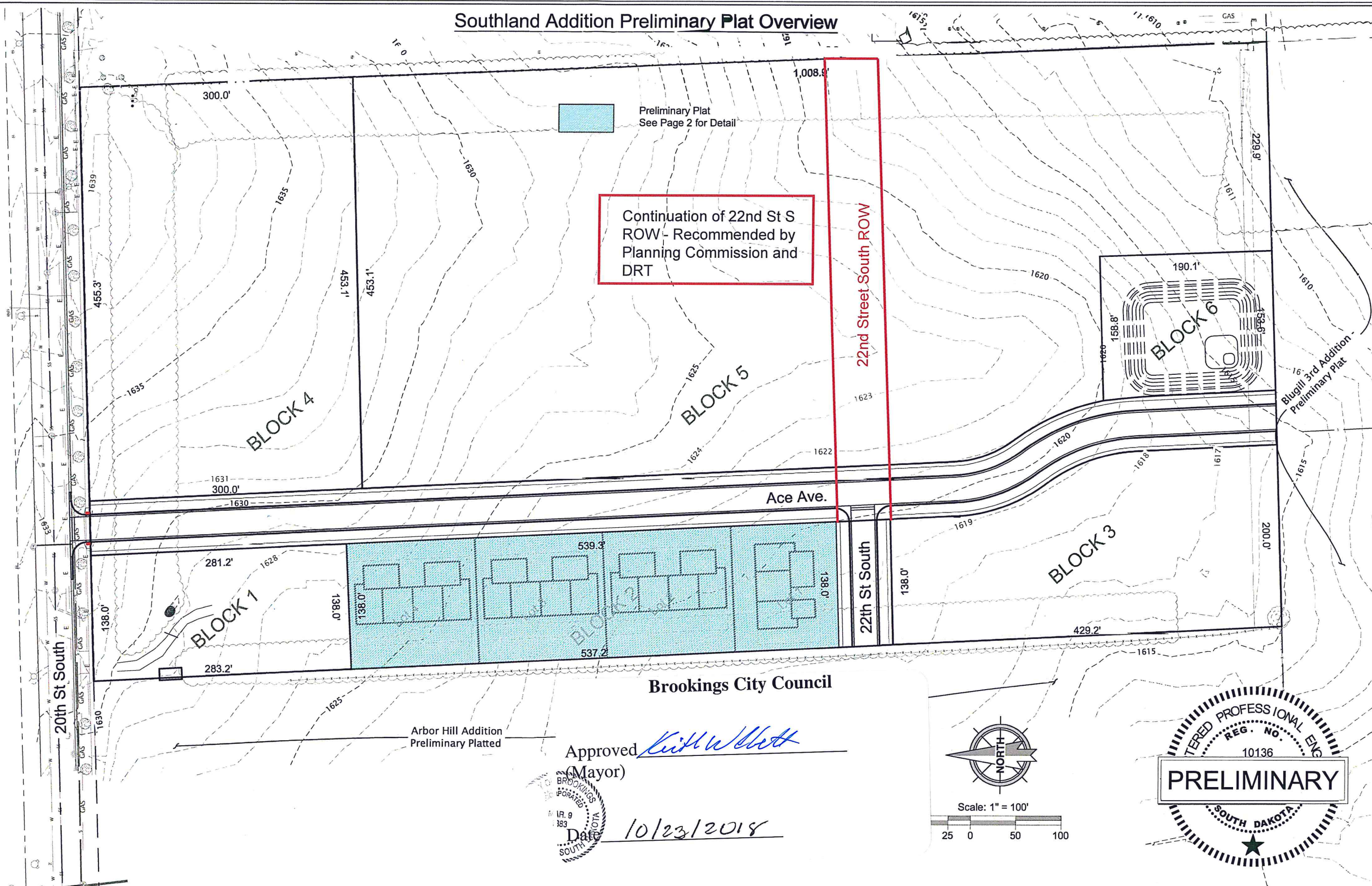


Southland Addition Preliminary Plat Overview



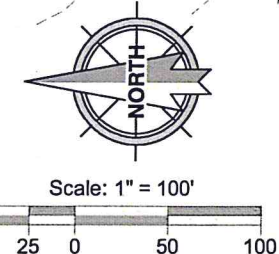
Continuation of 22nd St S  
ROW - Recommended by  
Planning Commission and  
DRT

Brookings City Council

Approved *Keith W. Bell*  
(Mayor)



Date 10/23/2018



PRELIMINARY



# Block 2 Southland Addition Preliminary Plat

## LEGAL DESCRIPTION

Lots, 1, 2, 3, 4 of Block 1 of Southland Addition in the NE 1/4 Section 1, T109N, R50W of the 5th P.M. City of Brookings, Brookings County, SD

## LEGEND

- 8" WTR Water
- 8" SS Sanitary Sewer
- S Storm Sewer
- - - 1620 Existing Contours
- Drainage Arrow

Developer: PMVK Limited  
611 6th St  
Brookings, SD 57006

Surveyor: Civil Design Inc.  
Andrew Kangas  
609 Main Avenue South  
Brookings, SD 57006  
(605) 696-3200

**R-3 Zoning Setbacks**  
Front = 20-feet  
Side = 7-feet  
Rear = 25-feet

**Minimum Lot Area**  
3 Units: 12,000 Sq Ft  
4 Units: 14,000 Sq Ft

Continuation of 22nd Street S  
ROW as recommended by  
PC and DRT

