



46369 223rd STREET  
NUNDA, SOUTH DAKOTA 57050

000.0000.0000  
amckillip@anisetodesign.com

Architect/Engineer Seal

**CONFLUENCE**

### Consulter

## LANDSCAPE ARCHITECTS

440 E 8TH STREET, SUITE 121  
SIOUX FALLS, SD 57103  
PH: 605.339.1205 FAX: 605.339.1211  
CONTACT: LYLE PUDWALL, ASLA  
EMAIL: lpudwall@thinkconfluence.com

## KEY PLAN

[illegible]

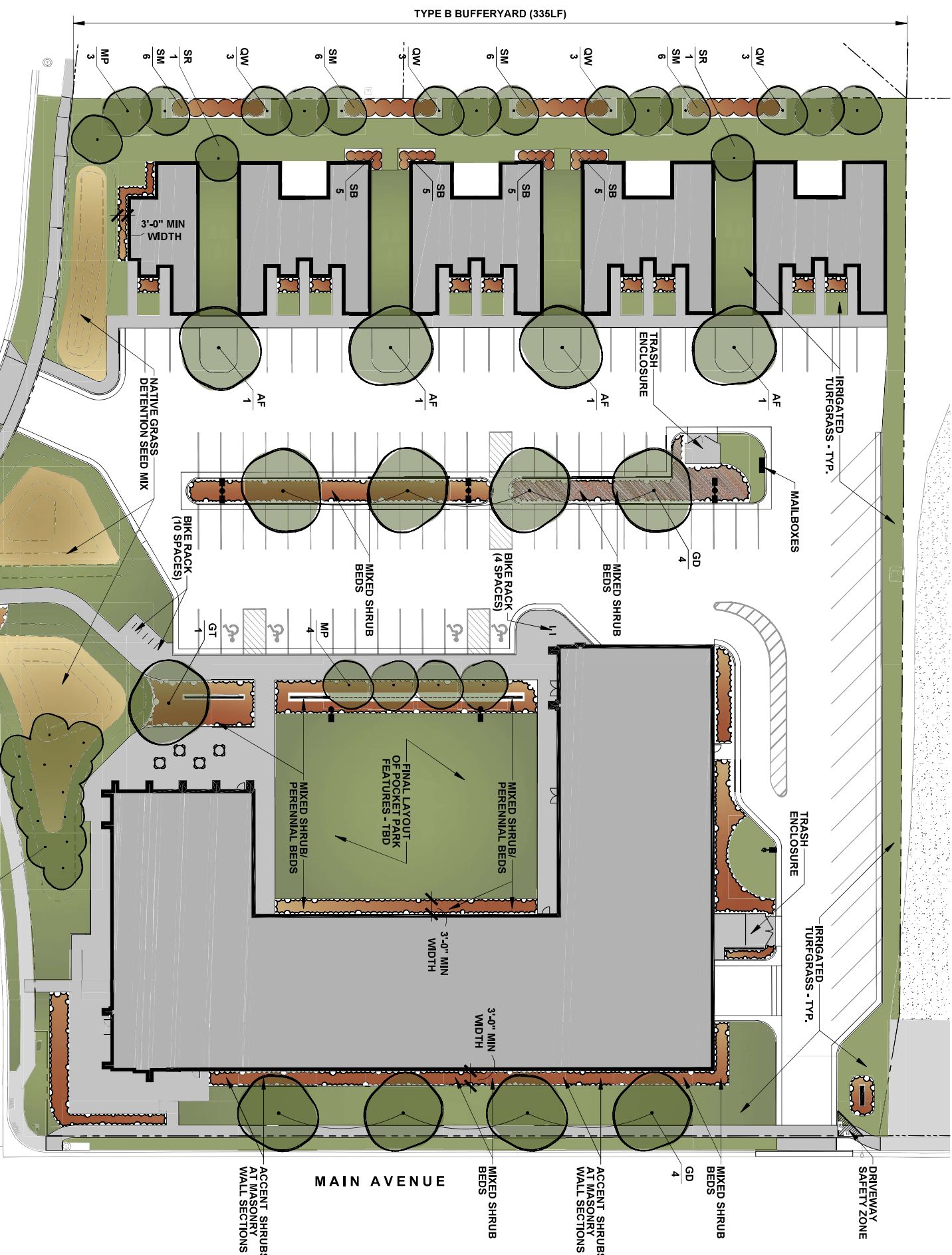
## TRAILS HEAD

Brookings, South Dakota

## PLANTING PLAN

|                 |             |
|-----------------|-------------|
| Project Number: | 22-06       |
| Scale:          | 1" = 20'-0" |
| Date:           | 05/28/2023  |

Sheet No.



| KEY          | QTY | BOTANICAL NAME                                  | COMMON NAME                    | SIZE        | ROOT | SPACING/<br>STAKING |
|--------------|-----|---|--------------------------------|-------------|------|---------------------|
| CANOPY TREES |     |   |                                |             |      |                     |
| AF           | #   | <i>Acacia x Freemanii</i> 'Sterna'              | SIENNA GLENN MAPLE             | 2-1/2" CAL. | B88  |                     |
| GT           | #   | <i>Christia tomentosa</i> 'Van Arman's Harvest' | NORTHERN ACCUM HONEYLOCUST     | 2-1/2" CAL. | B88  |                     |
| GD           | #   | <i>Gymnocladus dioica</i> 'Express'             | ESPRESSO NORTHEAST COFFEE TREE | 2-1/2" CAL. | B88  |                     |
| OM           | #   | <i>Quercus macrocarpa</i>                       | BUR OAK                        | 2-1/2" CAL. | B88  |                     |
| QW           | #   | <i>Quercus x virens</i> 'Long'                  | RED PRINCE OAK                 | 2-1/2" CAL. | B88  |                     |

|                         |   |                                     |                            |           |       |
|-------------------------|---|-------------------------------------|----------------------------|-----------|-------|
| Aa                      | # | Zemphrasen x Adam's Bismarck        | ADULT BRIGHT LATE SERVICED | 7-8 HI.   | B8B   |
| Mm                      | # | Nagoya x Bismarck                   | METAL MIGNOLA              | #25       | CONT. |
| Kk                      | # | Nagoya allura Royal Star            | ROYAL STAR MIGNOLA         | #10       | CONT. |
| Mx                      | # | Nakas x Prairie                     | PRAIRIE CHAMPAGNE          | #1 CAL    | B8B   |
| Pt                      | # | Popelka rembrandt Hs. var           | PRAIRE GOLD ASPEN          | 1+1/2 CAL | B8B   |
| Sr                      | # | Syringa nictitans Ivory Silk        | IVORY SILK JAPANESE LLAC   | #2 CAL    | B8B   |
| <b>DECIDUOUS SHRUBS</b> |   |                                     |                            |           |       |
| Hj                      | # | Hydrangea paniculata Lime           | LITTLE LIME HYDRANGEA      | #2        | CONT. |
| Hd                      | # | Hydrangea paniculata Little Quaking | LITTLE QUAKING HYDRANGEA   | #2        | CONT. |
| Po                      | # | Physocarpus opulifolius Dornia Way  | UTTE DEUL MINIBARK         | #2        | CONT. |
| Ra                      | # | Rhus aromatica Torch Red            | GRO-GOOL SLAMC             | #2        | CONT. |
| Ss                      | # | Spiraea albaflora Tor Gold          | TOR BRICKLE SPREA          | #2        | CONT. |
| Ss                      | # | Spiraea albaflora Tor Gold          | TOR GOLD BRICKLES SPREA    | #2        | CONT. |
| Sy                      | # | Syringa meyeri Palatin              | WIKER KORBEN LLAC          | #2        | CONT. |
| Sw                      | # | Swida viridis                       | DANIEL ROSES WISCLA        | 5-6' O.G. | CONT. |
| Vn                      | # | Viburnum plicatum                   | WINTER ROSES WISCLA        | 5-6' O.G. | CONT. |

| IV | # | Juniperus virginiana 'Taylor' | TAYLOR JUNIPER          | #15 | 44° O.C. |
|----|---|-------------------------------|-------------------------|-----|----------|
| PM |   | Pinus mugo var. nana          | DWARF MUGO PINE         | #2  | 64° O.C. |
| JA |   | Juniperus Andorra Compacta    | ANDORRA COMPACT JUNIPER | #1  | 54° O.C. |
| TM | # | Taxus x media 'Tauntonii'     | TAUNTON SPREADING YEW   | #2  | 64° O.C. |

[illegible]

|    |   |  |                                  |    |       |            |
|----|---|--|----------------------------------|----|-------|------------|
| CA | # | Callimargotis x aculeifera 'Karl Foerster' | KARL FOERSTER FEATHER REED GRASS | #1 | CONT. | 2-6" O.C.  |
| MP | # | Miscanthus purpurascens                    | FLAME GRASS                      | #1 | CONT. | 3-10" O.C. |