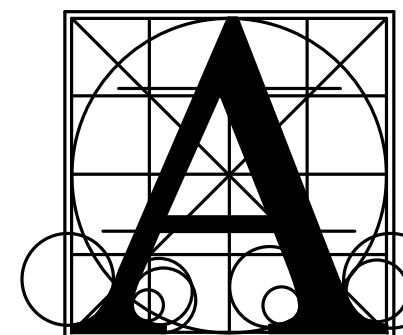


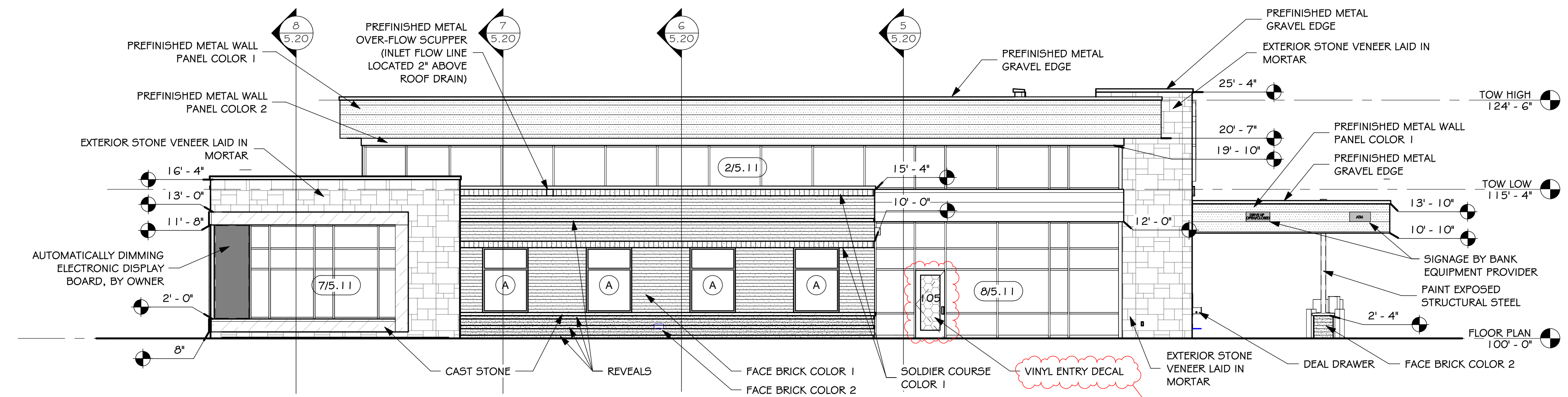
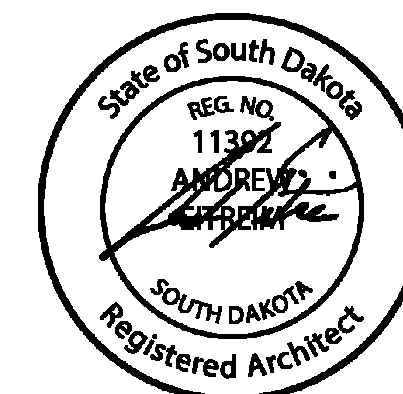
GENERAL NOTES - EXTERIOR ELEVATIONS
 A. GENERAL CONTRACTOR SHALL VERIFY ALL EXISTING CONDITIONS AND DIMENSIONS AT THE JOB SITE. REPORT DISCREPANCIES TO THE ARCHITECT.



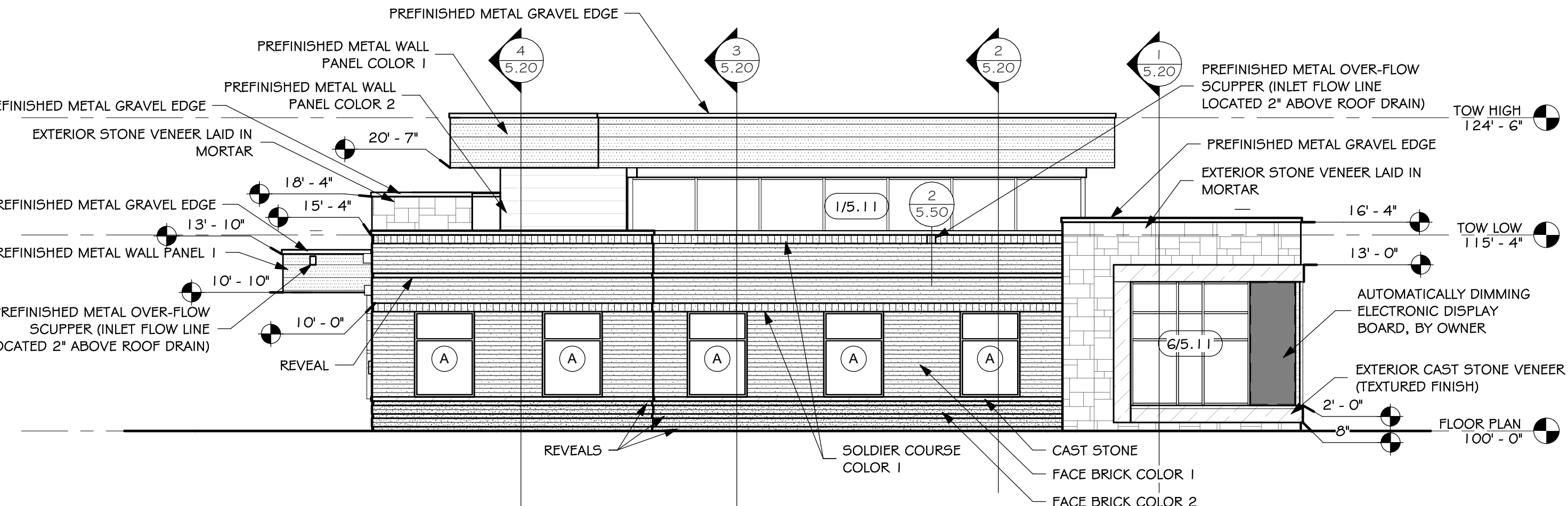
Architecture Incorporated

415 South Main Avenue
 P.O. Box 2140
 Sioux Falls, South Dakota 57101
 Phone: (605) 339-1711

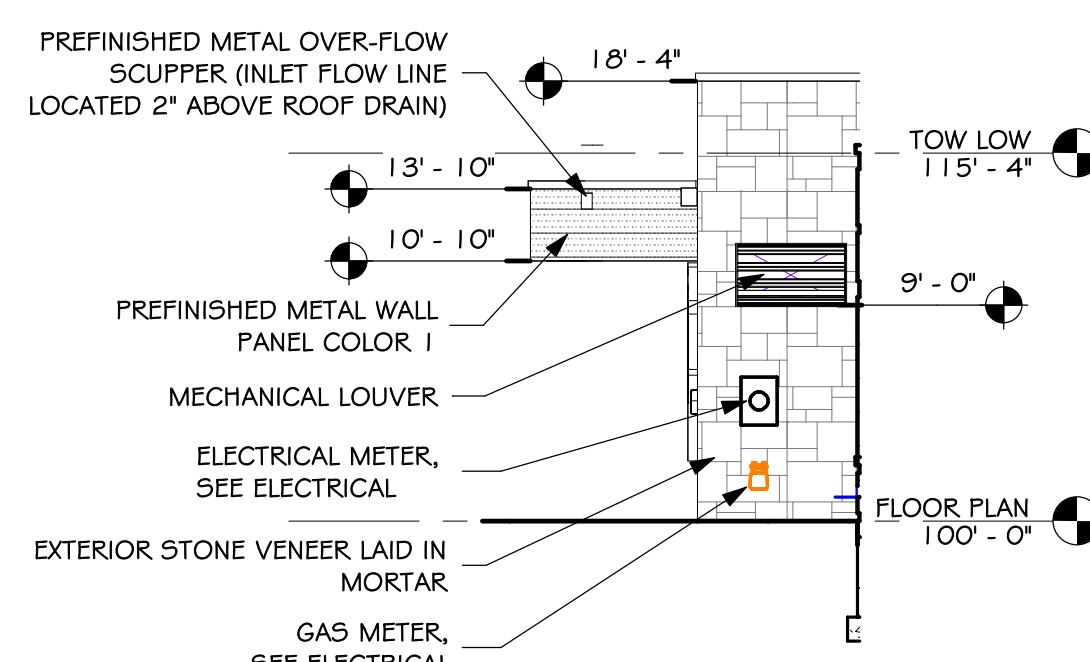
815 St Joseph Street, Suite 203
 Rapid City, South Dakota 57701
 Phone: (605) 721-1158



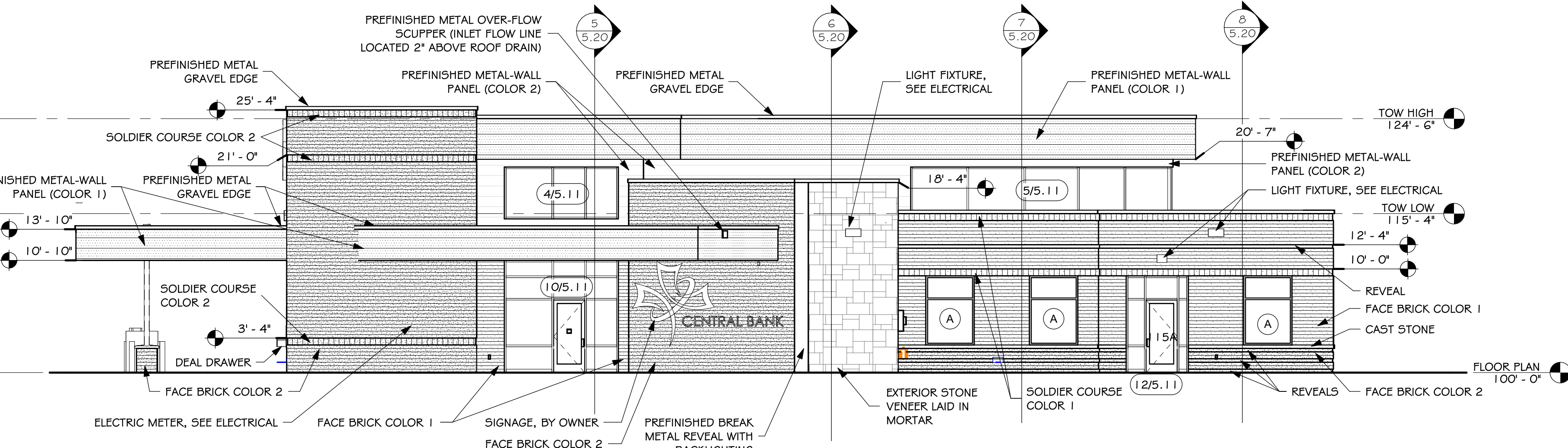
A SOUTH ELEVATION
 5.10 SCALE: 1/8" = 1'-0"



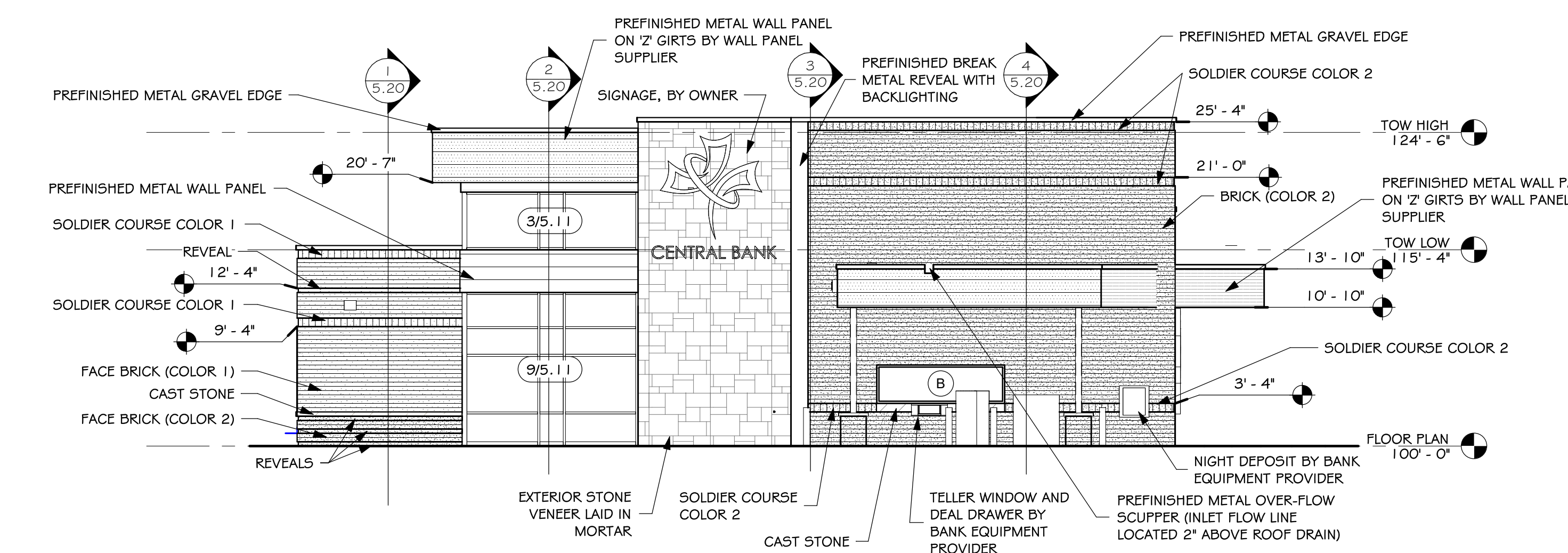
B WEST ELEVATION
 5.10 SCALE: 1/8" = 1'-0"



E WEST ELEVATION
 5.10 SCALE: 1/8" = 1'-0"



C NORTH ELEVATION
 5.10 SCALE: 1/8" = 1'-0"

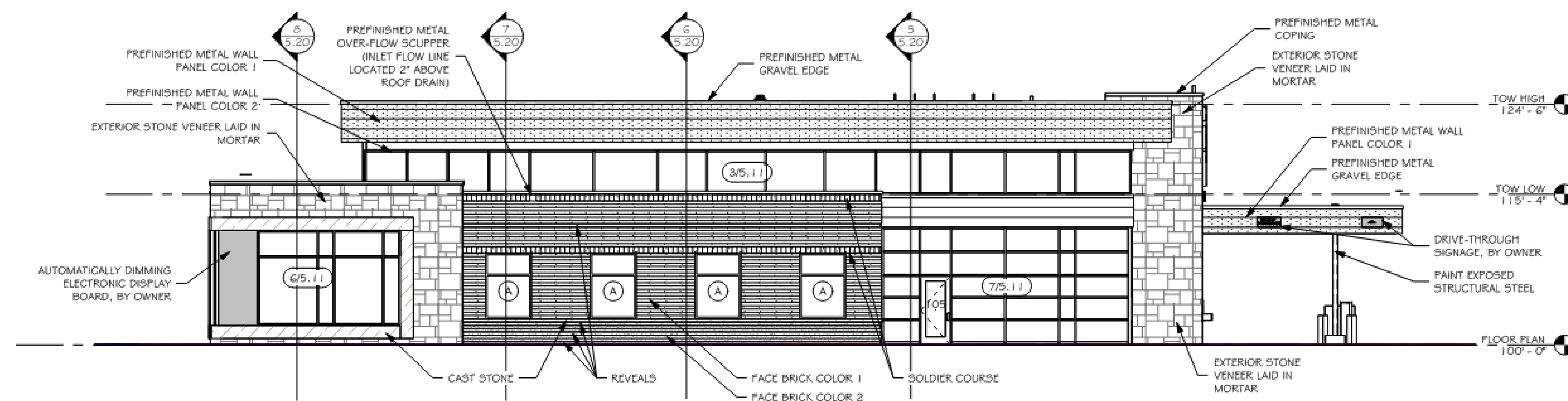


D EAST ELEVATION
 5.10 SCALE: 1/8" = 1'-0"

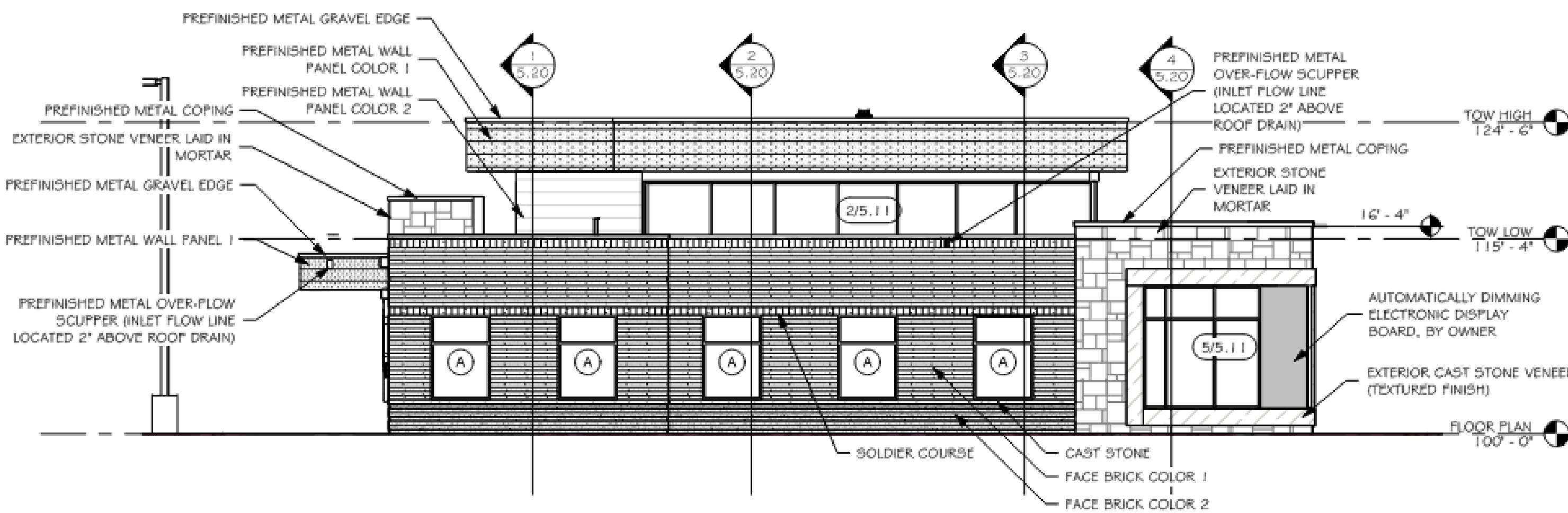
CENTRAL BANK - BROOKINGS
 EXTERIOR ELEVATIONS

Project: CENTRAL BANK - BROOKINGS
 sheet contents
 number: 3067
 date: March 10, 2025
 revision:
 drawn: SWP checked: TLM

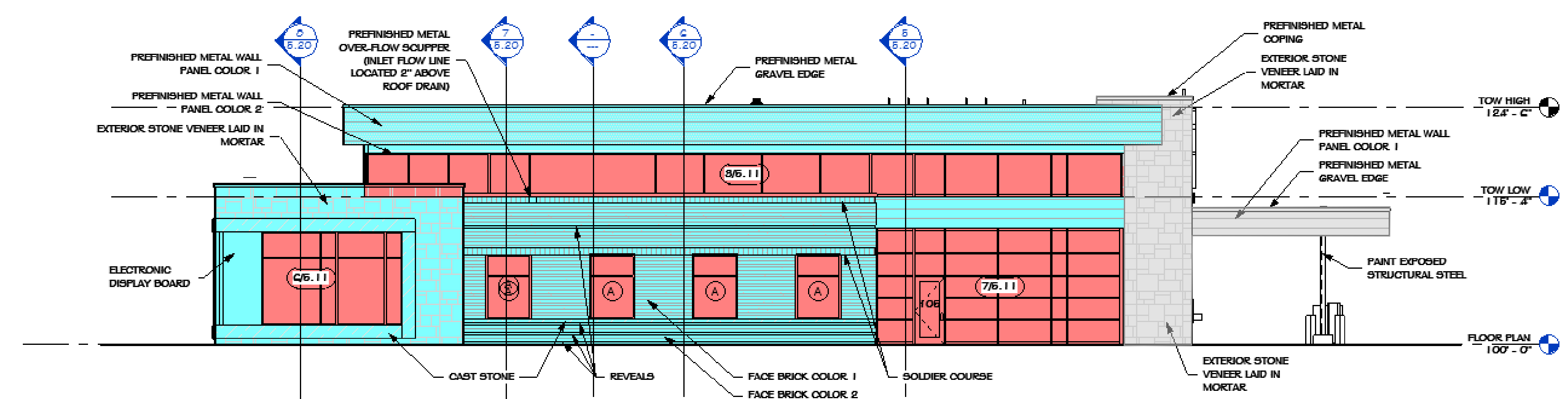
DATE	DESCRIPTION
3.21.2025	ADDENDUM #1



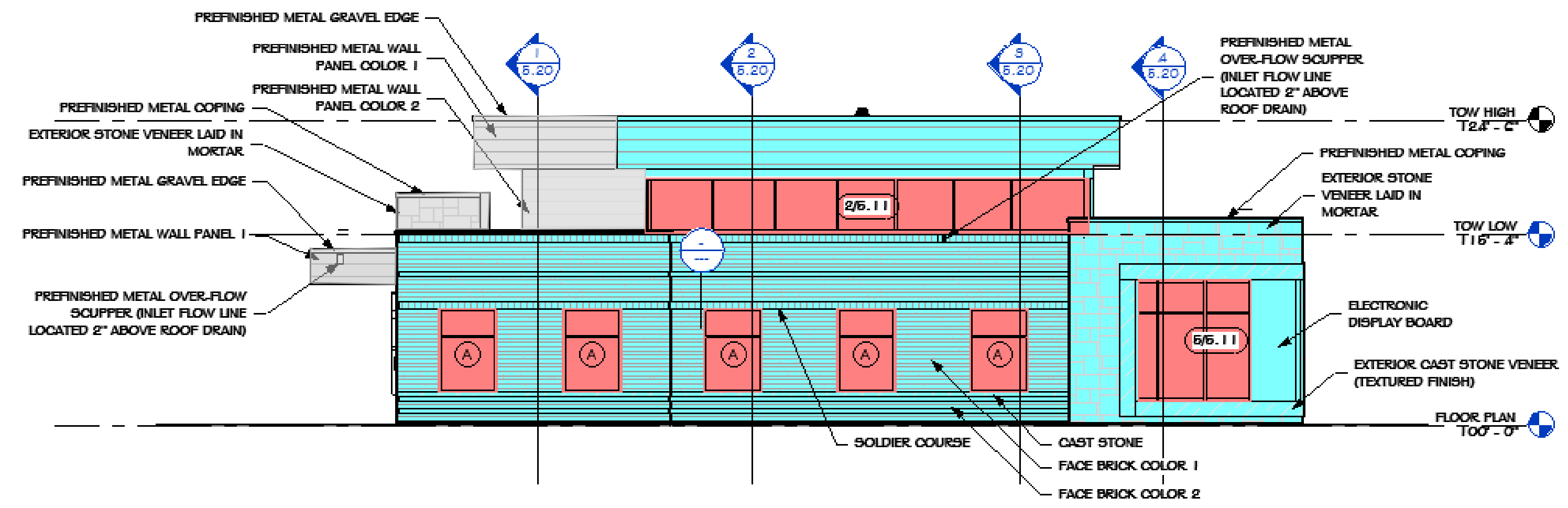
A SOUTH ELEVATION
5.10 SCALE: 1/8" = 1'-0"



B WEST ELEVATION
5.10 SCALE: 1/8" = 1'-0"



A SOUTH ELEVATION 925 SQ FT GLAZING / 2,240 SQ FT TOTAL FRONTAGE = 41%
5.10 SCALE: 1/8" = 1'-0"



B WEST ELEVATION 400 SQ FT GLAZING / 1,490 SQ FT TOTAL FRONTAGE = 27%
5.10 SCALE: 1/8" = 1'-0"

GRAYED OUT PORTIONS ARE SET BACK, NOT INCLUDED IN TOTAL FRONTAGE

GLAZING ANALYSIS