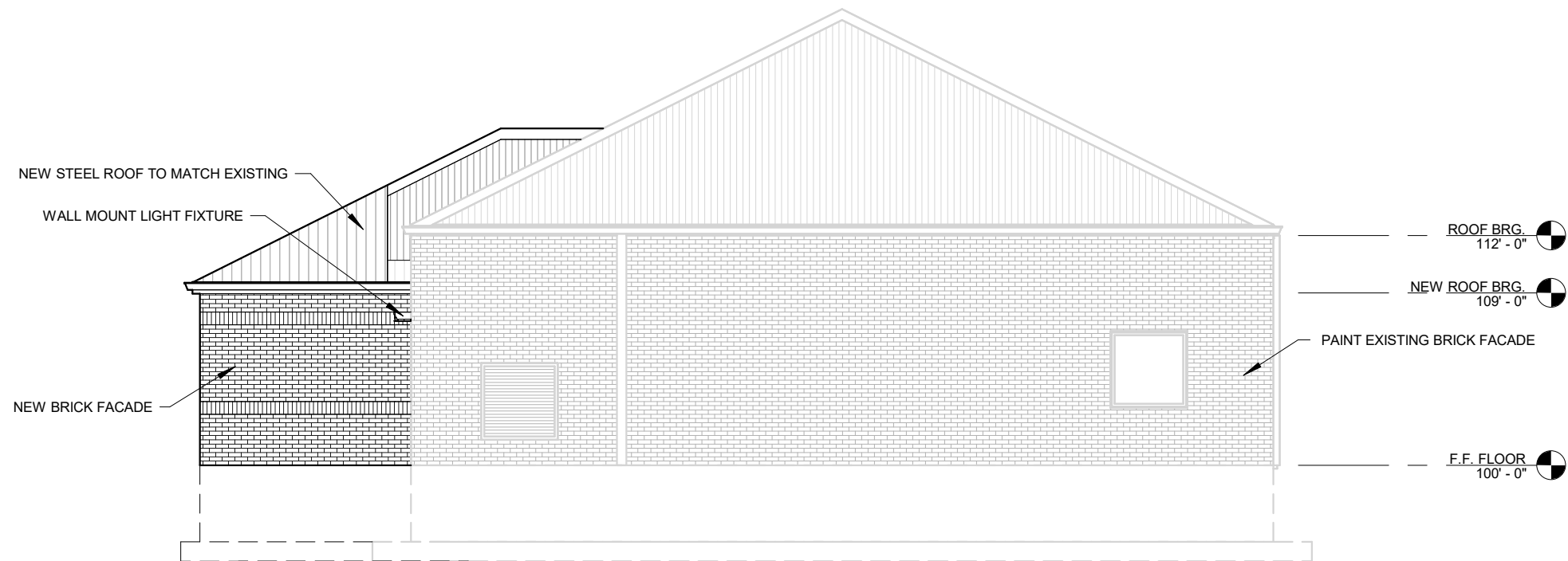
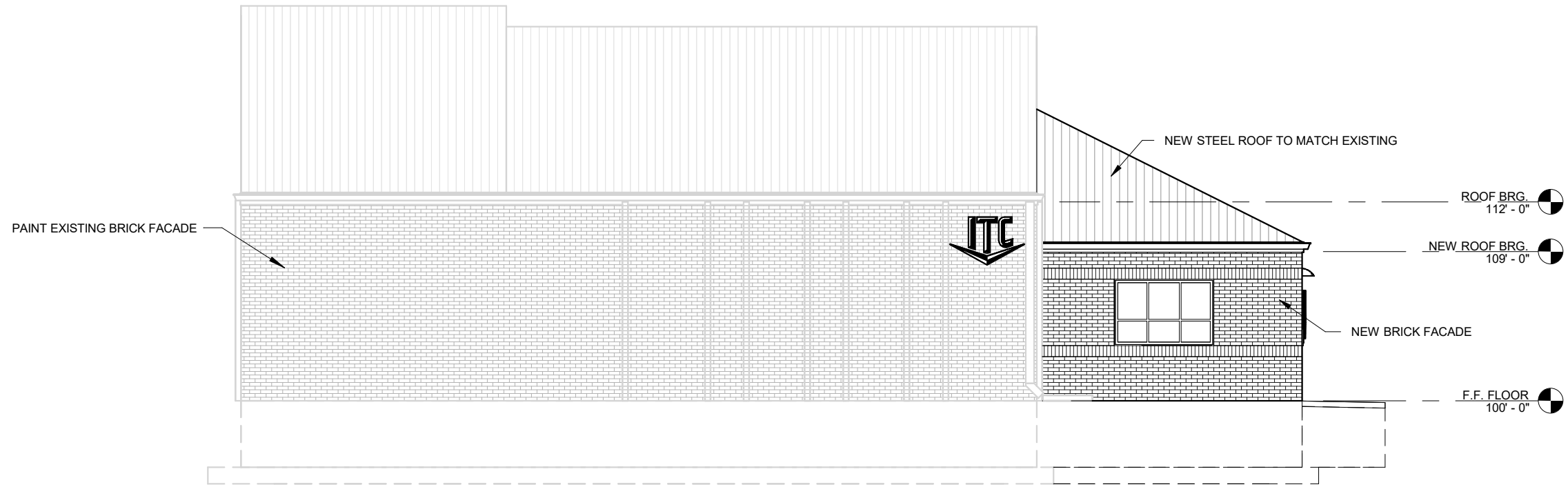




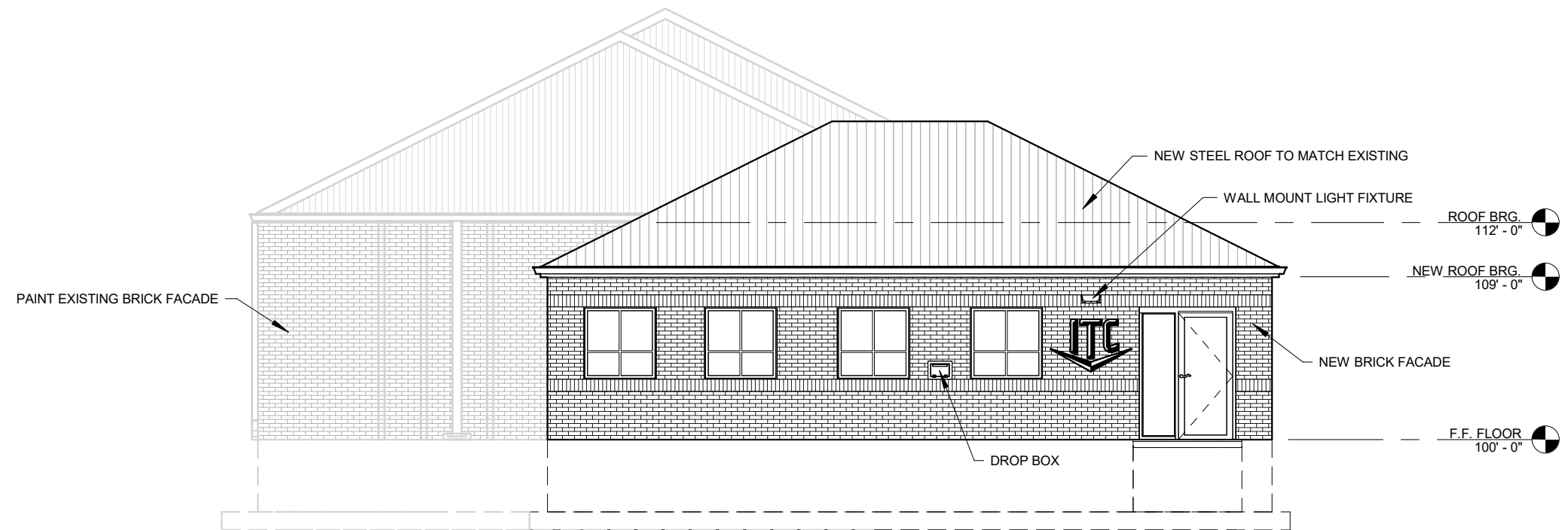
1 EAST ELEVATION
A-105 1/8" = 1'-0"



2 NORTH ELEVATION
A-105 1/8" = 1'-0"



1 WEST ELEVATION
A-106 1/8" = 1'-0"



2 SOUTH ELEVATION
A-106 1/8" = 1'-0"

5/28/2024 4:25:56 PM