

Plot Date: 3/25/2024 2:34:23 PM

P:\0672115\672115\DWG\PLANS\1\_PRELIMINARY PLANS\672115 - UTILITY PLAN.DWG

**LEGEND:**

- - SANITARY SEWER MAIN
- Ⓢ - SEWER MANHOLE
- - SEWER FLOW DIRECTION
- - WATER MAIN
- Ⓜ - FIRE HYDRANT
- Ⓥ - WATER VALVE
- - STORM PIPE
- △ - FLARED END SECTION

**NOTES**

EXISTING WATER MAIN ALONG W 20TH STREET SOUTH TO BE EXTENDED TO THE WESTERN PROPERTY LIMIT. WATER MAIN IS TO BE CAPPED FOR FUTURE EXTENSION.

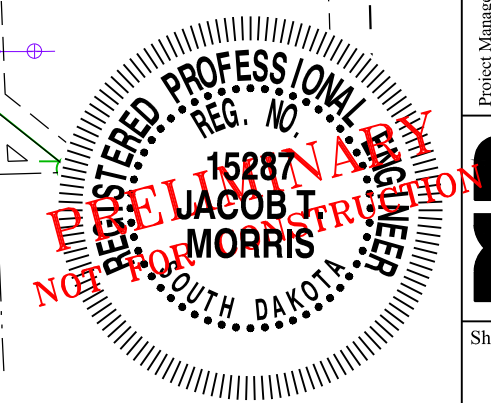
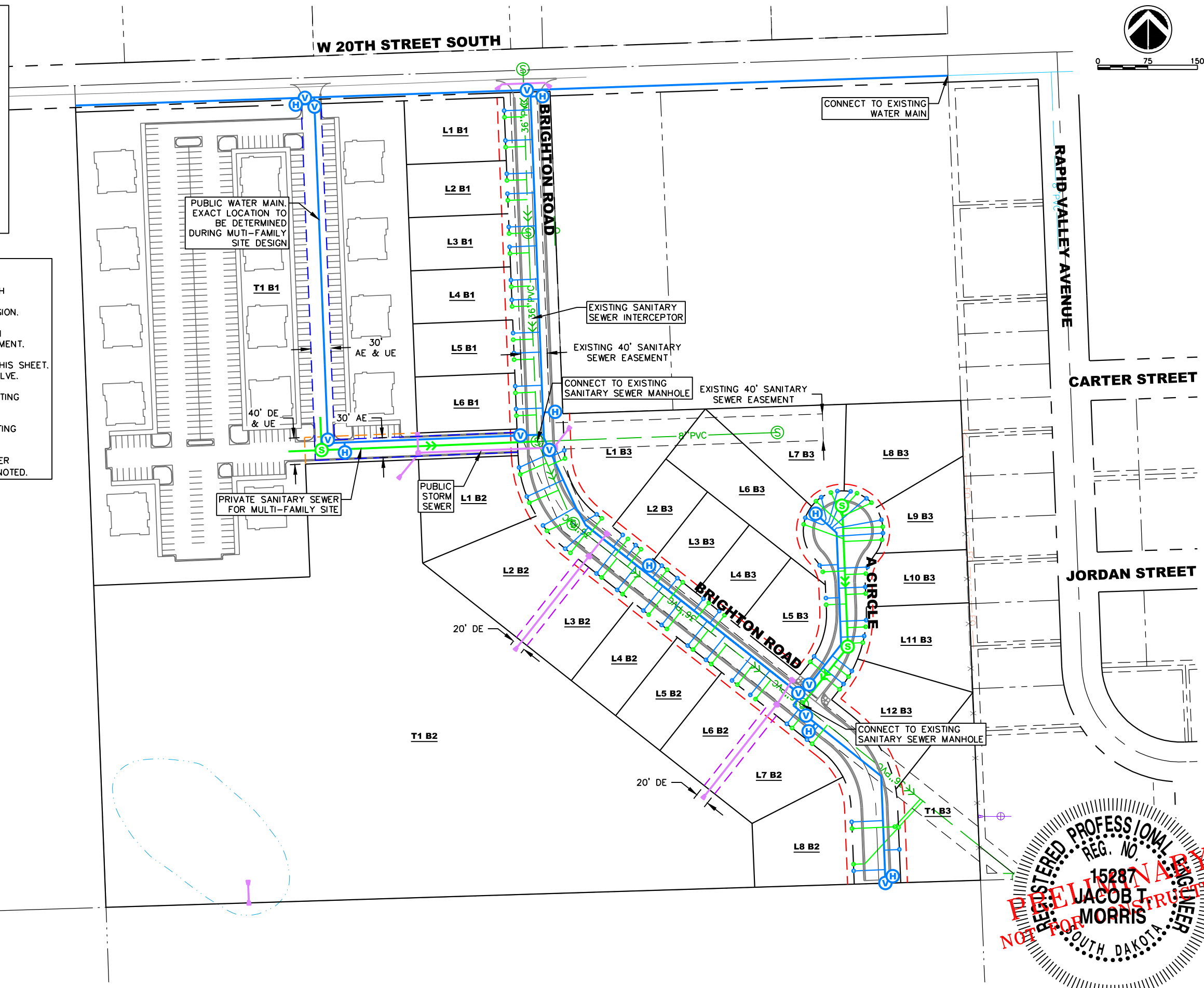
WATER MAIN IS TO BE EXTENDED TO THE SOUTHERN PROPERTY LINE AND CAPPED FOR FUTURE DEVELOPMENT.

VALVES ON HYDRANT LEADS ARE NOT SHOWN ON THIS SHEET. ALL HYDRANT LEADS WILL BE INSTALLED WITH A VALVE.

SANITARY SEWER MAINS TO BE CONNECTED TO EXISTING INTERCEPTOR AT EXISTING MANHOLE LOCATIONS.

SANITARY SEWER SERVICES TO BE TAPPED TO EXISTING SEWER INTERCEPTOR AT LOCATIONS SHOWN.

ALL PROPOSED SEWER COLLECTION MAINS AND WATER DISTRIBUTION MAINS TO BE 8" UNLESS OTHERWISE NOTED.



Preliminary Plans  
Prairie Sunset Addition  
Brookings, South Dakota

Utility Plan

Project Manager: JTM  
 Designer: JJE  
 Project Number: 672115  
 Phone: (605) 339-4157

