

FLOOR PLAN LEGEND:

WALL TYPE, SEE SHEET T1.3.

WINDOW / STOREFRONT  
TYPE, SEE SHEET A7.1.

DOOR #, SEE SHEET A7.1.

DOOR APPROACH FOR ADA  
CLEARANCES

SHEAR WALL, SEE STRUCT.

FLOOR DRAIN, SEE MECH.

FLOOR SINK, SEE MECH.

DOWNSPOUT

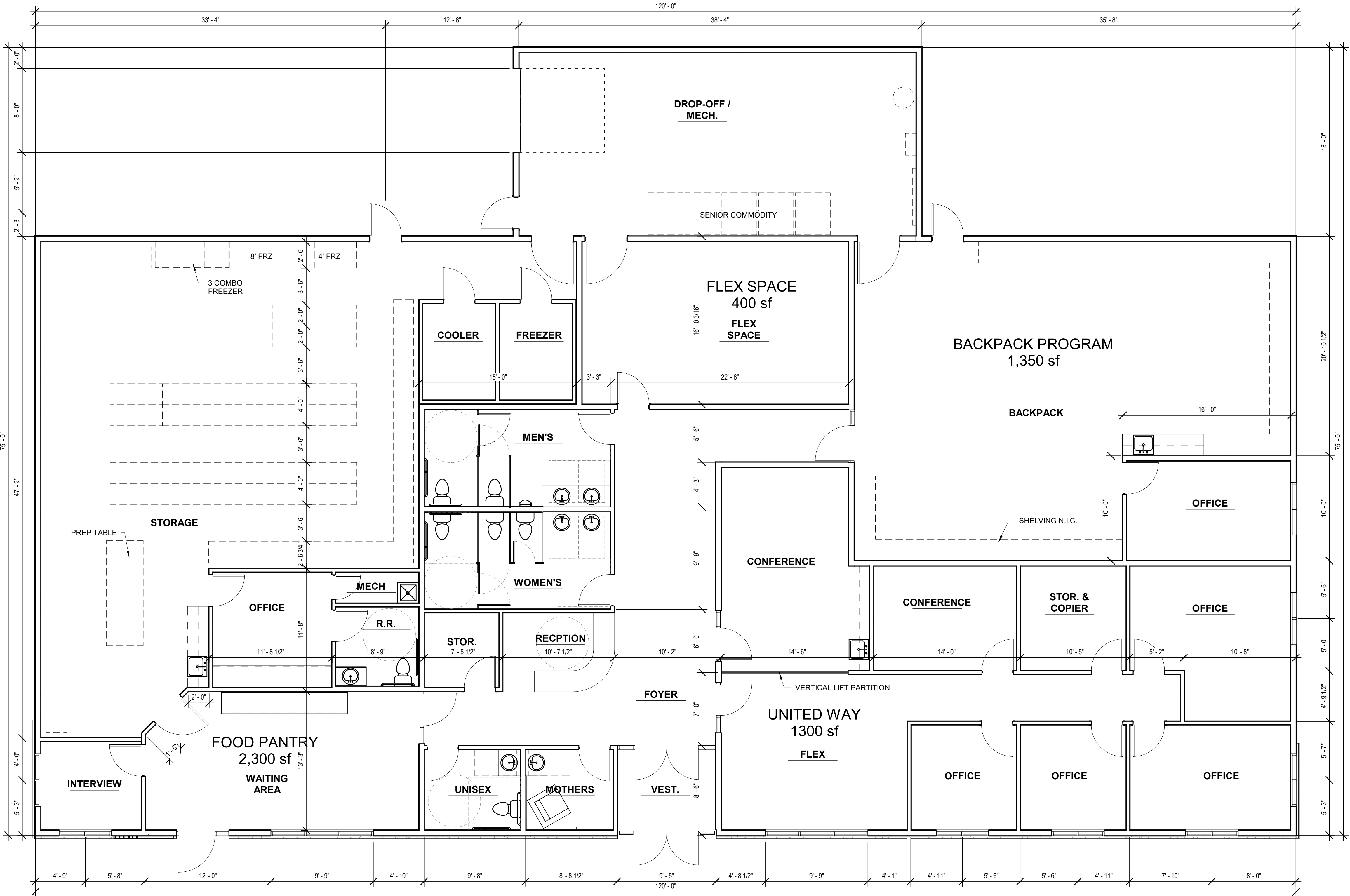
NOTE: NOT ALL DESIGNATIONS WILL APPEAR.

GENERAL NOTES - FLOOR PLANS

- A. ALL DIMENSIONS FROM FACE OF STUD UNLESS CLEARLY NOTED OTHERWISE.
- B. ALL INTERIOR WALL TYPES TO BE WALL TYPE T1.3 UNLESS OTHERWISE NOTED. WALL TYPES LISTED ON SHEET T1.3.
- C. FLOOR FINISH TRANSITIONS TO BE 1/2" BETWEEN FINISH HEIGHTS.
- D. VERIFY ALL APPLIANCE DIMENSIONS FOR TO CONSTRUCTION. REPORT ANY DISCREPANCIES TO ARCHITECT IMMEDIATELY.
- E. PROVIDE WATER-RESISTANT BOARD AT ALL BATHROOM WALL SURFACES UNLESS CLEARLY NOTED OTHERWISE. MAINTAIN FIRE-RESISTANCE RATING, IF REQUIRED.
- F. CAULK PERIMETER OF COUNTERTOPS, BACKSPLASHES, CAULK JOINT TO BE CLEAR OR MATCH ADJ. WALL FINISH.
- G. SEE SHEET A7.1 FOR DOOR/WINDOW/FRAME ELEVATIONS, DOOR SCHEDULE AND WINDOW SCHEDULE.
- H. SEE ROOM FINISH SCHEDULE ON SHEET A7.1 FOR ALL INTERIOR FINISHES TO BE PROVIDED.
- I. MOVABLE FURNITURE SHOWN AS REFERENCE ONLY (NOT IN CONTRACT).
- J. PROVIDE CORNER GUARDS AT ALL INTERIOR OUTSIDE-CORNER APPLICATIONS EQUAL TO OR GREATER THAN 90 DEGREES.

KEYNOTES - FLOOR PLANS

1. REVISE ME!



PRELIMINARY PLANS - NOT  
FOR CONSTRUCTION



Architecture | Planning | Interiors

830 2<sup>nd</sup> Street South  
Brookings, SD 57006 | P: 605.692.4008

315 N. Main Ave. Ste. 301  
Sioux Falls, SD 57104 | P: 605.692.4008

STAMP:

PRELIMINARY  
PLANS

NOT FOR  
CONSTRUCTION

DATE:

REVISIONS:  
NO. DESCRIPTION:

SHEET NAME:  
FIRST FLOOR PLAN

PROJECT NO.  
DA20\_024

NON-PROFIT  
BUILDING

BROOKINGS, SD  
PROJECT MANAGER:  
THOMAS SQUIRES

DATE:  
05.20.2021

SHEET:

A1.1

FULL-SCALE: 24x36  
HALF-SCALE: 12x18  
DRAWING MAY NOT BE PRINTED TO SCALE

1 MAIN FLOOR PLAN  
3/16" = 1'-0"