

Architecture | Planning | Interiors  
 434 5th Street, Suite 1  
 Brookings, SD 57006 | P: 605.692.4008  
 2301 W. Russell St. Suite 1  
 Sioux Falls, SD 57104 | P: 605.692.4008

STAMP:  
**PRELIMINARY PLANS**  
 NOT FOR CONSTRUCTION

REVISIONS:  
 NO. DESCRIPTION DATE:  
 BUILDING ELEVATIONS  
 SHEET NAME:  
 FULL-SCALE: 24x36  
 HALF-SCALE: 12x18  
 DRAWING MAY NOT BE PRINTED TO SCALE

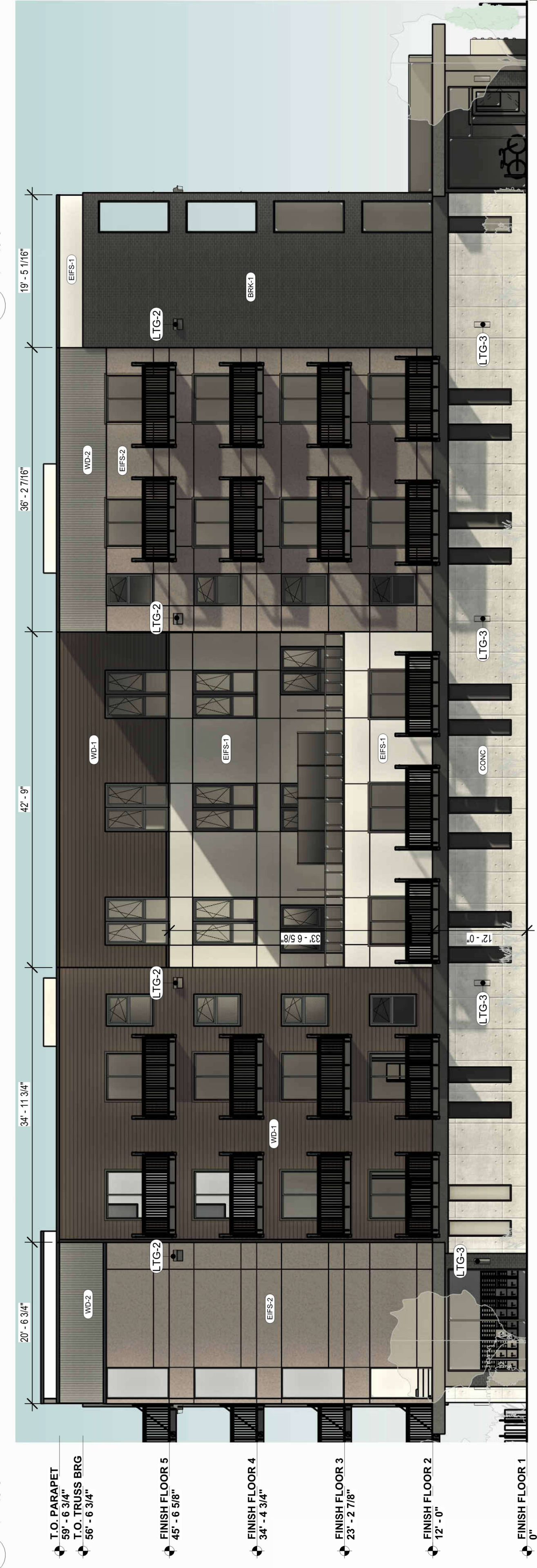
PROJECT NO.  
**DA23-074**  
**CAMPANILE FLATS**  
 BROOKINGS, SD  
 PROJECT MANAGER:  
**HERMELA ABOYE**  
 DATE: **05.14.2024**  
 SHEET:

**A2.1**

**PRELIMINARY PLANS - NOT FOR CONSTRUCTION**



**1 BUILDING ELEVATION - NORTH**  
 1" = 10'-0"



**2 BUILDING ELEVATION - SOUTH**  
 1" = 10'-0"

**EXTERIOR MATERIALS LEGEND**

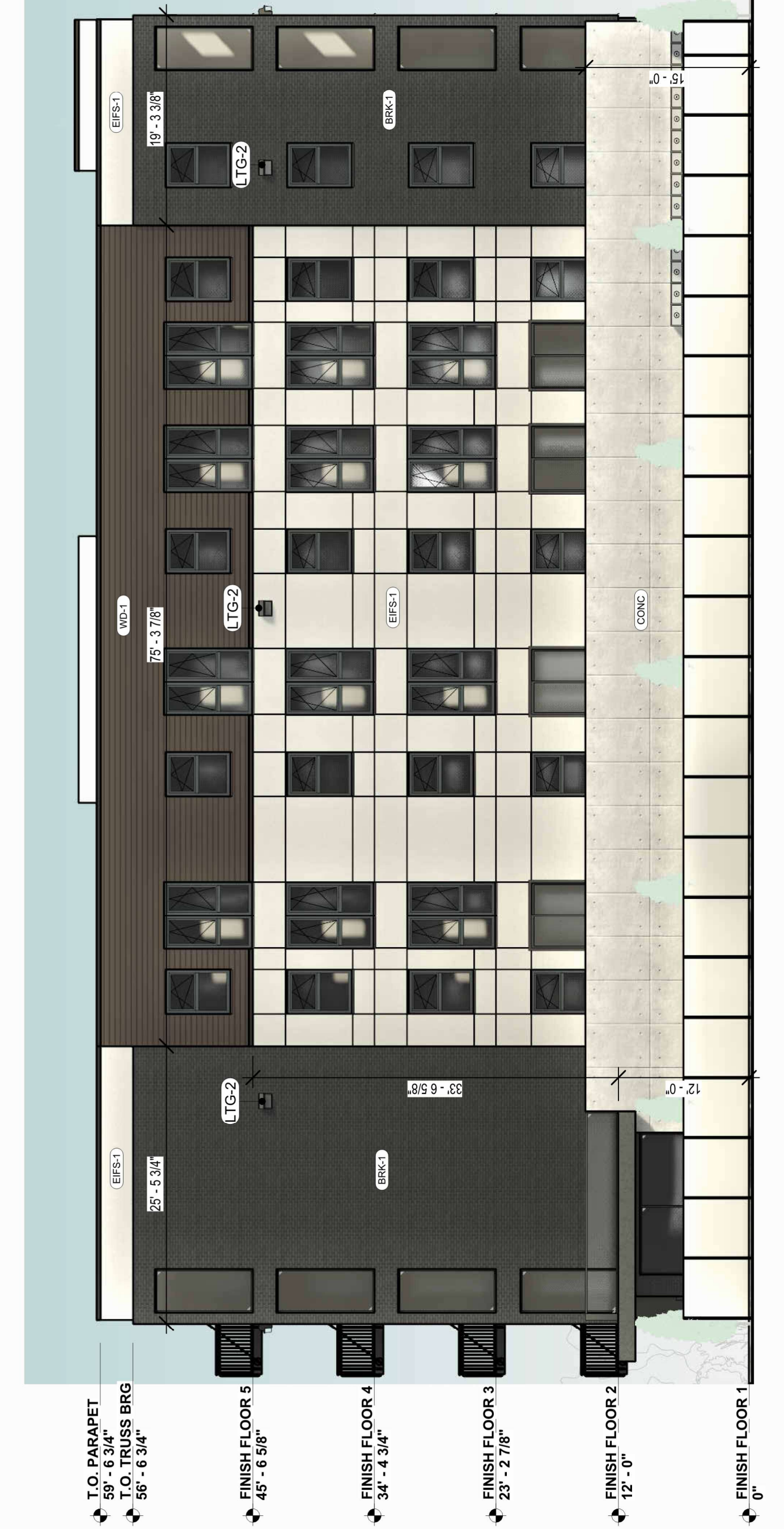
MATERIAL ABBREVIATION	MATERIAL DESCRIPTION	COMMENTS
BRK-1	BRICK	Color TBD
CONC	ARCHITECTURAL PRECAST	Color TBD
EIFS-1	EIFS	Color TBD
EIFS-2	EIFS	Color TBD
WD-1	WOOD SIDING, HORIZONTAL	Color TBD
WD-2	WOOD SIDING, VERTICAL	Color TBD

**LIGHTING FIXTURE SCHEDULE**

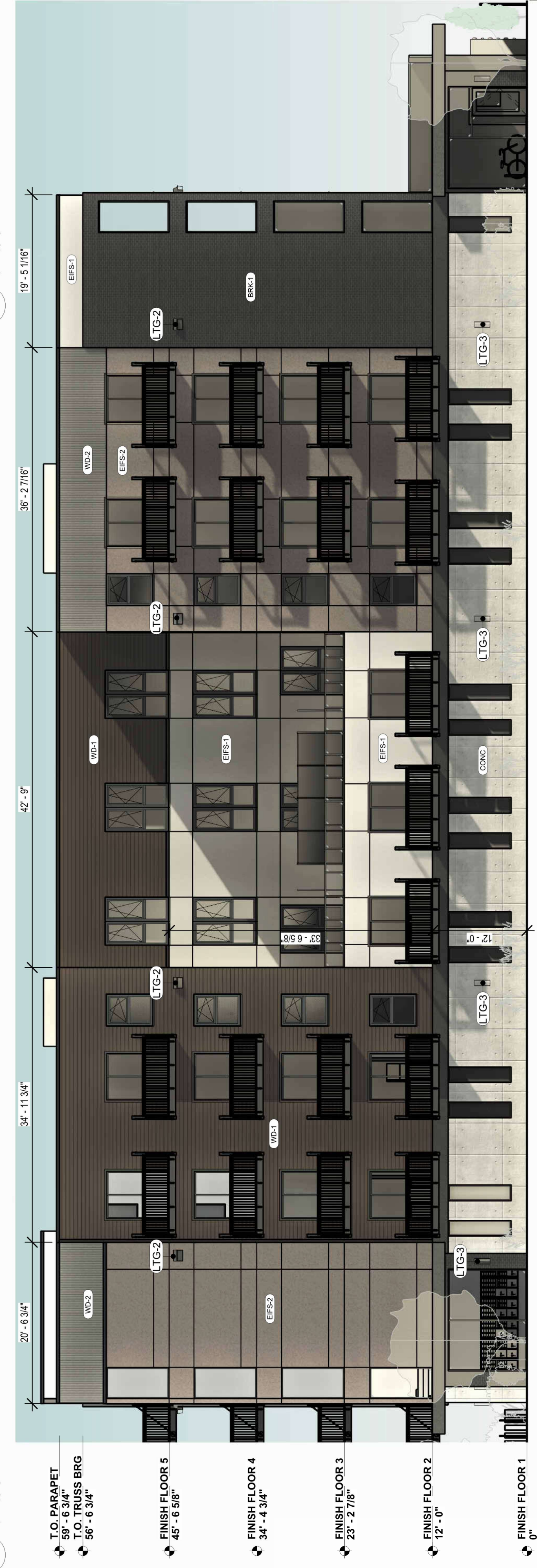
Type Mark	Count	Description
LTG-1	2	LED POLE LIGHTING
LTG-2	12	LED WALL PACK LIGHTING
LTG-3	8	LED WALL WASHER LIGHTING

**PLANTING SCHEDULE**

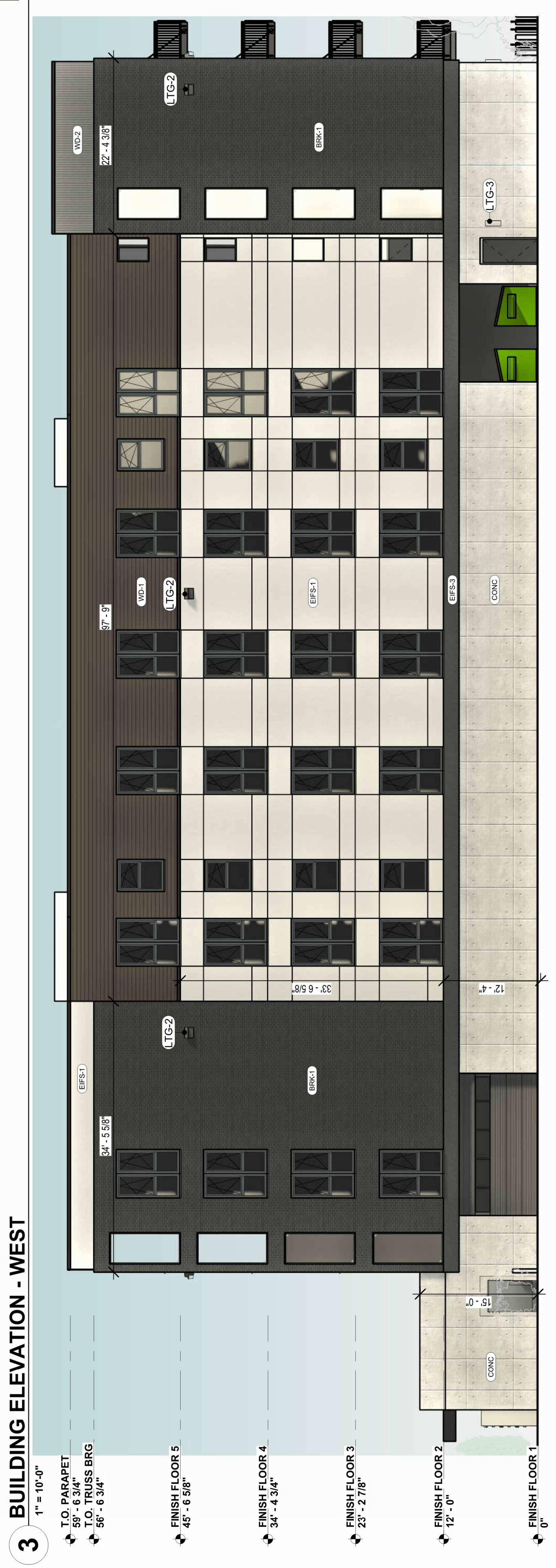
Type Mark	Count	Description
LAN-1	11	HONEY LOCUST TREE - 1.5' CALIPE
LAN-2	7	LOMBARDY POPLAR
LAN-3	12	HYDRANGEA INCREDIBALL
LAN-4	19	HAPPY RETURN DAYLILLY
LAN-5	18	KARL FOESTER GRASS



**3 BUILDING ELEVATION - WEST**  
 1" = 10'-0"



**4 BUILDING ELEVATION - EAST**  
 1" = 10'-0"



**5 BUILDING ELEVATION - SOUTH**  
 1" = 10'-0"