



GERKINTM

WINDOWS & DOORS

HAMLIN BUILDING CENTER
1915 32ND AVE

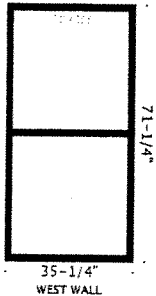
BROOKINGS, SD 57006



Quote Number: 500376
Date Created: 1/12/26
PO Number:
Job Name: LANSANG RHINO

BID BY: Dan Lesnar PHONE: (605) 692-3381 FAX: 605-692-8990 EMAIL: DANL@HAMLINBC.COM

Line	QTY	Description	Each	Total
1	QTY: 6	(5922) RHINO ALUM SINGLE-HUNG	\$739.90	\$4,439.40



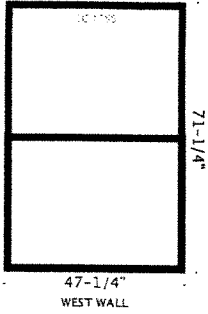
CPDNUM: GER-K- 16-00385-00001
NFRC UF: 0.40
NFRC SHGC: 0.24
NFRC VT: 0.53
NFRC CR: 41
AAMA AIR INFIL: 0.0300

TAG/MARK: WEST WALL
036.0000 X 072.0000 RO ,SGL-HUNG, DRK BRZ ANODIZE
5/8" OA GLZ: 1/8 LOE3 X 1/8 CLEAR
INSULATED GLASS TO HAVE: ARGON FILL
SCREENS: FIBERGLASS SENT W/WINDOWS
FLANGE DESCRIPTION: WITH FLANGES
WINDOW *MEETS* UNIFORM CODE EGRESS REQUIREMENTS*

Colors are an approximate, see Gerkin color chain for exact match.

2 QTY: 2 (5922) RHINO ALUM SINGLE-HUNG \$864.33 \$1,728.66

CPDNUM: GER-K- 16-00385-00001
 NFRC UF: 0.40
 NFRC SHGC: 0.24
 NFRC VT: 0.53
 NFRC CR: 41
 AAMA AIR INFIL: 0.0300

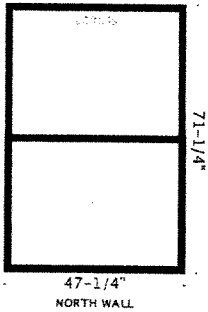


TAG/MARK: WEST WALL
048.0000 X 072.0000 RO ,SGL-HUNG, DRK BRZ ANODIZE
5/8" OA GLZ: 1/8 LOE3 X 1/8 CLEAR
INSULATED GLASS TO HAVE: ARGON FILL
SCREENS: FIBERGLASS SENT W/WINDOWS
FLANGE DESCRIPTION: WITH FLANGES
WINDOW *MEETS* UNIFORM CODE EGRESS REQUIREMENTS*

Colors are an approximate, see Gerkin color chain for exact match.

3 QTY: 16 (5922) RHINO ALUM SINGLE-HUNG \$864.33 \$13,829.28

CPDNUM: GER-K- 16-00385-00001
 NFRC UF: 0.40
 NFRC SHGC: 0.24
 NFRC VT: 0.53
 NFRC CR: 41
 AAMA AIR INFIL: 0.0300

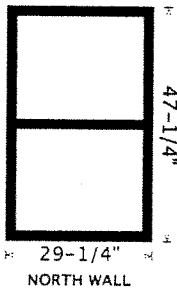


TAG/MARK: NORTH WALL
048.0000 X 072.0000 RO ,SGL-HUNG, DRK BRZ ANODIZE
5/8" OA GLZ: 1/8 LOE3 X 1/8 CLEAR
INSULATED GLASS TO HAVE: ARGON FILL
SCREENS: FIBERGLASS SENT W/WINDOWS
FLANGE DESCRIPTION: WITH FLANGES
WINDOW *MEETS* UNIFORM CODE EGRESS REQUIREMENTS*

Colors are an approximate, see Gerkin color chain for exact match.

4 QTY: 1 (5922) RHINO ALUM SINGLE-HUNG \$559.36 \$559.36

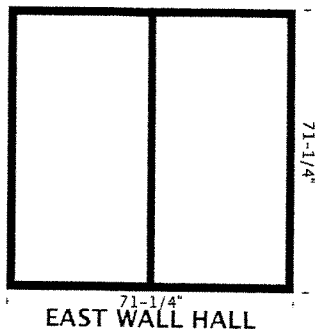
CPDNUM: GER-K- 16-00385-00001
 NFRC UF: 0.40
 NFRC SHGC: 0.24
 NFRC VT: 0.53
 NFRC CR: 41
 AAMA AIR INFIL: 0.0300



TAG/MARK: NORTH WALL
030.0000 X 048.0000 RO ,SGL-HUNG, DRK BRZ ANODIZE
5/8" OA GLZ: 1/8 LOE3 X 1/8 CLEAR
INSULATED GLASS TO HAVE: ARGON FILL
SCREENS: FIBERGLASS SENT W/WINDOWS
FLANGE DESCRIPTION: WITH FLANGES
DOES *NOT* MEET UNIFORM CODE EGRESS REQUIREMENTS

Colors are an approximate, see Gerkin color chain for exact match.

5 QTY: 1 (5.2H) RHINO ALUM 2-LITE HORZ \$1,143.51 \$1,143.51

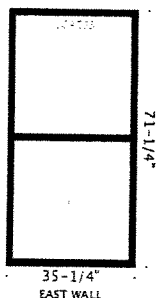


CPDNUM: GER-K- 19-00327-00001
 NFRC UF: 0.35
 NFRC SHGC: 0.24
 NFRC VT: 0.55
 NFRC CR: 44
 AAMA AIR INFIL: 0.0100

072.0000 X 072.0000 RO 2 3/8 FRM
 COLOR: DRK BRZ ANODIZE
 GERKIN THERMALLY BROKEN ALUMINUM MULTI-LITES
 CONFIGURATION: 2-LITE HORIZONTAL PER BELOW
 **LFT UNIT: FIXED LITE
 **RGT UNIT: FIXED LITE
 1"OA: 1/8 LOE3 X 1/8 CLEAR
 FILL INSULATED GLASS WITH ARGON
 FLG: FLUSH EXTERIOR NO NAIL HOLES
 WINDOW CONFIGURATION TO HAVE EQUAL LITES
 TAG/MARK: EAST WALL HALL

Colors are an approximate, see Gerkin color chain for exact match.

6 QTY: 3 (5922) RHINO ALUM SINGLE-HUNG \$739.90 \$2,219.70

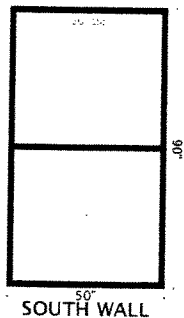


CPDNUM: GER-K- 16-00385-00001
 NFRC UF: 0.40
 NFRC SHGC: 0.24
 NFRC VT: 0.53
 NFRC CR: 41
 AAMA AIR INFIL: 0.0300

TAG/MARK: EAST WALL
 036.0000 X 072.0000 RO ,SGL-HUNG, DRK BRZ ANODIZE
 5/8" OA GLZ: 1/8 LOE3 X 1/8 CLEAR
 INSULATED GLASS TO HAVE: ARGON FILL
 SCREENS: FIBERGLASS SENT W/WINDOWS
 FLANGE DESCRIPTION: WITH FLANGES
 WINDOW *MEETS* UNIFORM CODE EGRESS REQUIREMENTS*

Colors are an approximate, see Gerkin color chain for exact match.

7 QTY: 10 (5922) RHINO ALUM SINGLE-HUNG \$1,028.28 \$10,282.80

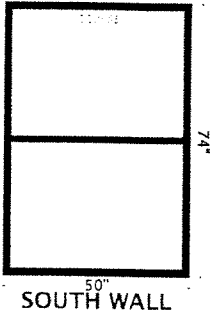


CPDNUM: GER-K- 16-00385-00001
 NFRC UF: 0.40
 NFRC SHGC: 0.24
 NFRC VT: 0.53
 NFRC CR: 41
 AAMA AIR INFIL: 0.0300

TAG/MARK: SOUTH WALL
 050.0000 X 090.0000 WD ,SGL-HUNG, DRK BRZ ANODIZE
 5/8" OA GLZ: 1/8 LOE3 X 1/8 CLEAR
 INSULATED GLASS TO HAVE: ARGON FILL
 SCREENS: FIBERGLASS SENT W/WINDOWS
 FLANGE DESCRIPTION: WITH FLANGES
 WINDOW *MEETS* UNIFORM CODE EGRESS REQUIREMENTS*

Colors are an approximate, see Gerkin color chain for exact match.

8 QTY: 4 (5922) RHINO ALUM SINGLE-HUNG \$969.71 \$3,878.84

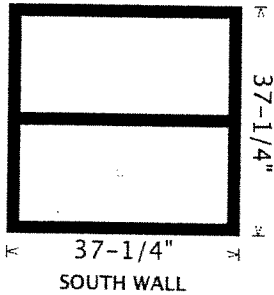


CPDNUM: GER-K- 16-00385-00001
 NFRC UF: 0.40
 NFRC SHGC: 0.24
 NFRC VT: 0.53
 NFRC CR: 41
 AAMA AIR INFIL: 0.0300

TAG/MARK: SOUTH WALL
050.0000 X 074.0000 WD ,SGL-HUNG, DRK BRZ ANODIZE
5/8" OA GLZ: 1/8 LOE3 X 1/8 CLEAR
INSULATED GLASS TO HAVE: ARGON FILL
SCREENS: FIBERGLASS SENT W/WINDOWS
FLANGE DESCRIPTION: WITH FLANGES
WINDOW *MEETS* UNIFORM CODE EGRESS REQUIREMENTS*

Colors are an approximate, see Gerkin color chain for exact match.

9 QTY: 1 (5922) RHINO ALUM SINGLE-HUNG \$623.70 \$623.70



CPDNUM: GER-K- 16-00385-00001
 NFRC UF: 0.40
 NFRC SHGC: 0.24
 NFRC VT: 0.53
 NFRC CR: 41
 AAMA AIR INFIL: 0.0300

TAG/MARK: SOUTH WALL
038.0000 X 038.0000 RO ,SGL-HUNG, DRK BRZ ANODIZE
5/8" OA GLZ: 1/8 LOE3 X 1/8 CLEAR
INSULATED GLASS TO HAVE: ARGON FILL
SCREENS: FIBERGLASS SENT W/WINDOWS
FLANGE DESCRIPTION: WITH FLANGES
DOES *NOT* MEET UNIFORM CODE EGRESS REQUIREMENTS

Colors are an approximate, see Gerkin color chain for exact match.

Net Material:	\$38,705.25
Subtotal:	\$38,705.250
Misc Charge:	\$0.00
Deposit:	\$0.00
Total:	\$38,705.25

QUOTE PREPARED BY: HAMLIN BUILDING CENTER