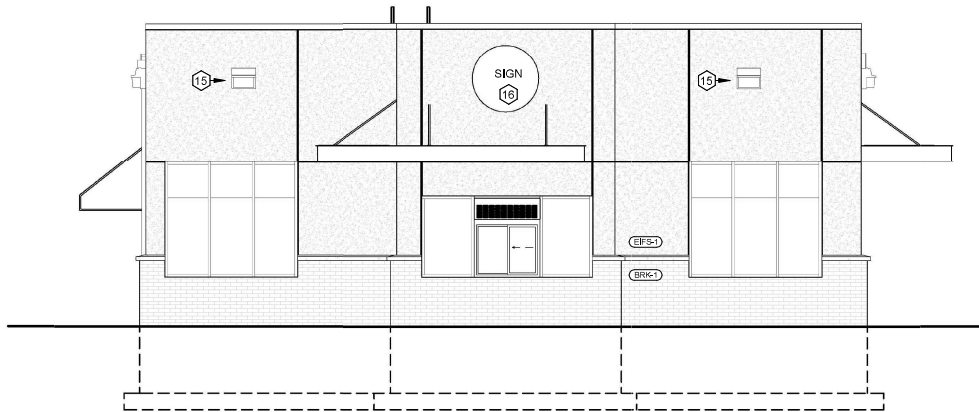
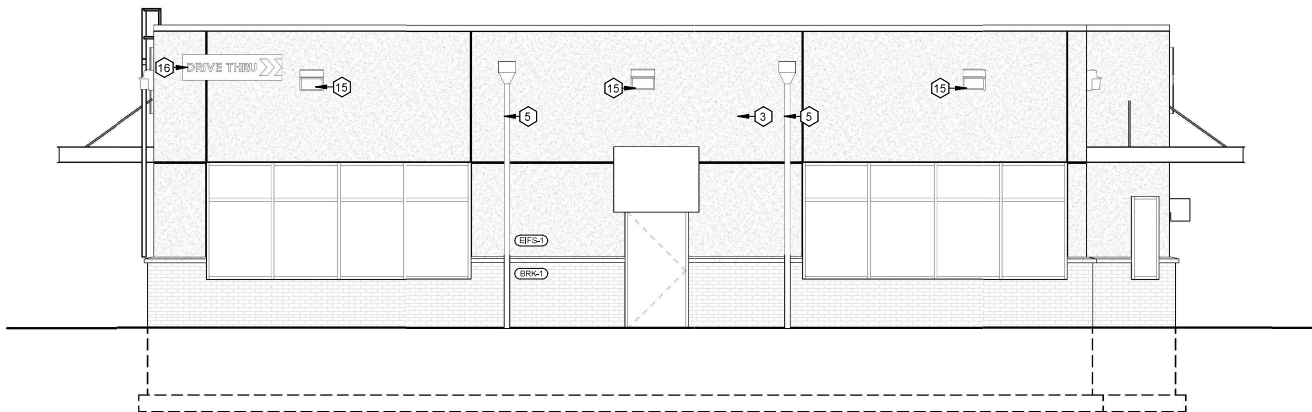


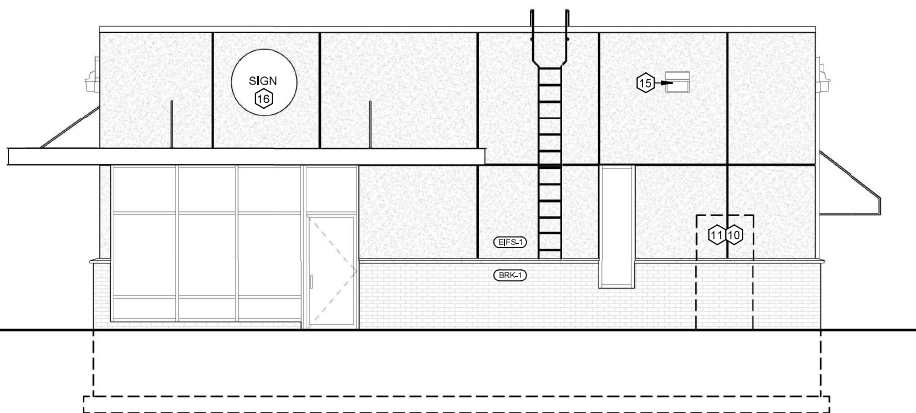
1 BUILDING ELEVATION - WEST  
3/16" = 1'-0"



2 BUILDING ELEVATION - NORTH  
3/16" = 1'-0"



3 BUILDING ELEVATION - EAST  
3/16" = 1'-0"



4 BUILDING ELEVATION - SOUTH  
3/16" = 1'-0"

## GENERAL NOTES - BUILDING ELEVATIONS

- EXTERIOR LIGHTING INDICATED FOR PLACEMENT ONLY. SEE ELEC. FOR LIGHTING SPECIFICATIONS.
- SEE SPECIFICATIONS FOR FULL REQUIREMENTS FOR EXTERIOR BUILDING MATERIALS. MATERIALS INDICATED GENERICALLY ON PLANS FOR CLARITY.
- INSTALL ALL EXTERIOR BUILDING PRODUCTS PER MANUFACTURER'S RECOMMENDATIONS. REPORT ANY DISCREPANCIES TO ARCHITECT IMMEDIATELY.

## KEYNOTES - BUILDING ELEVATIONS

- SLANT-BACK METAL ROOF VENT.
- REFINISHED METAL PARAPET CAP FLASHING, SEE TYPICAL DETAILS.
- ROOF TRANSITION LADDER, FABRICATOR TO DESIGN TO MEET ALL OSHA REQUIREMENTS, VERIFY ACTUAL TRANSITION HEIGHTS IN FIELD AFTER INSULATION INSTALL.
- MECHANICAL ROOFTOP EQUIPMENT (SEE MECH).
- MIN. 8" x 16" OVERFLOW ROOF SCUPPER W/ RAIN LEADER, SLEEVE INTO -STS- LINE PER CIVIL DRAWINGS, CONFIRM ACTUAL WALL OPENING HEIGHT IN FIELD W/ HEIGHT OF INSULATION PROVIDED.
- 42"H GUARDRAIL REQ'D PER OSHA REGULATIONS FOR SERVICEABLE EQUIPMENT WITHIN 10' OF A SIGNIFICANT FALL.
- PRECAST CONC. SPLASHBLOCKS AT ALL DOWNSPOUTS UNLESS TYING DIRECTLY INTO -STS- LINE.
- BUILDING PREMISES IDENTIFICATION, OWNER TO CONFIRM EXACT LOCATIONS.
- FIRE DEPARTMENT ACCESS KEY BOX, COORDINATE EXACT LOCATION W/ LOCAL FIRE DEPT.
- GAS METER (SEE MECH.).
- ELEC. METER (SEE ELEC.).
- EIFS 3/4" V-GROOVE CONTROL JOINT.
- CAST-STONE BELT COURSE / SILL CAP, SEE TYPICAL DETAILS.
- EIFS CORNICE, SEE TYPICAL DETAILS.
- EXTERIOR BUILDING LIGHTING BY ELECTRICAL CONTRACTOR
- BUILDING SIGNAGE, SHOWN ON DRAWINGS FOR LOCATION REFERENCE ONLY, DESIGN BY OTHERS, TO BE IN SEPARATE PERMITTING PACKAGE, DESIGNER TO VERIFY ALL LOCAL ZONING SIGNAGE REQUIREMENTS.

## EXTERIOR MATERIALS LEGEND

MATERIAL ABBREVIATION	MATERIAL DESCRIPTION	COMMENTS
BRK-1	Cavity veneer brick, running bond, utility size	Color TBD
EIFS-1	EIFS Finish over 1-1/2" insulation, STO 800 Series, fine texture	Color TBD



Architecture | Planning | Interiors

434 5th Street, Suite 1  
Brookings, SD 57006 | P: 605.692.4008

2301 W. Russell St, Suite 1  
Sioux Falls, SD 57104 | P: 605.692.4008

STAMP:

**PRELIMINARY  
PLANS**

NOT FOR  
CONSTRUCTION

DATE:

REVISIONS:  
NO. DESCRIPTION:

SHEET NAME:  
**BUILDING ELEVATIONS**

PROJECT NO.  
DA23\_031

**COFFEE SHOP 20TH  
STREET SOUTH**

BROOKINGS, SD

PROJECT MANAGER:  
**EMILY LINEHAN**

DATE:  
09.28.2023

SHEET:

**A2.1**

**PRELIMINARY PLANS - NOT  
FOR CONSTRUCTION**

FULL SCALE: 24x36  
HALF SCALE: 12x18  
DRAWING MAY NOT BE PRINTED TO SCALE